



Knowledge Exchange Seminar Series (KESS)

...is a forum that encourages debate on a wide range of research findings, with the overall aim of promoting evidence-based policy and law-making within Northern Ireland

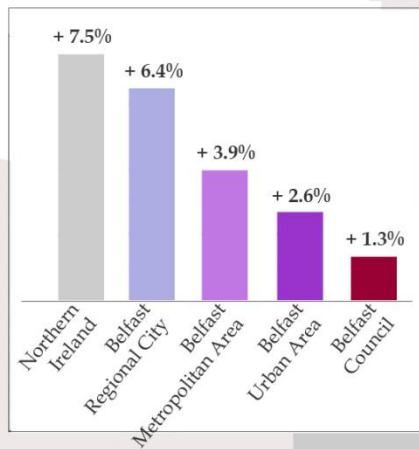


Changing population in Belfast

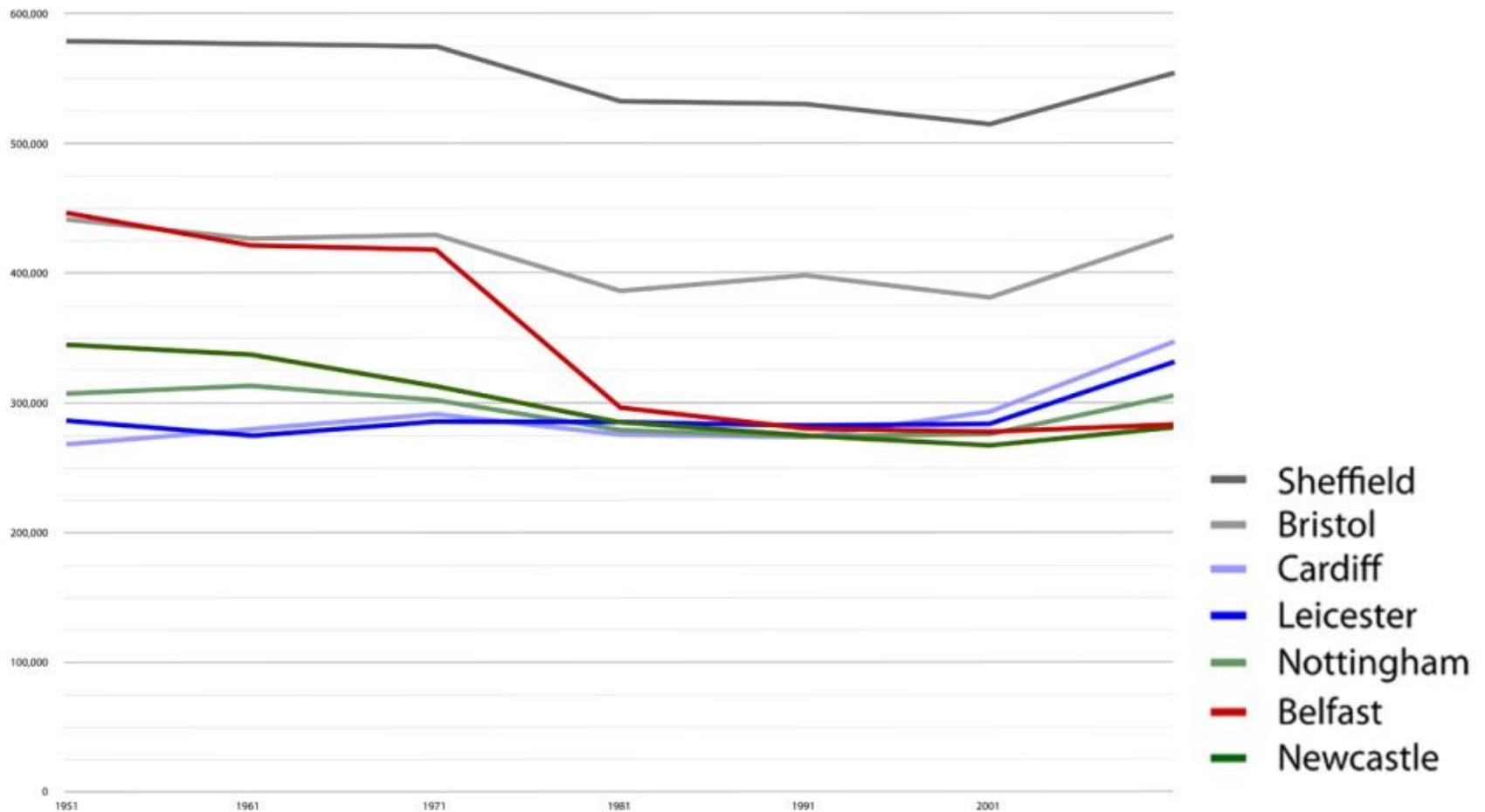
Prof. Frank Gaffikin
Queen's University Belfast

Northern Ireland Population Growth

2001 - 2011



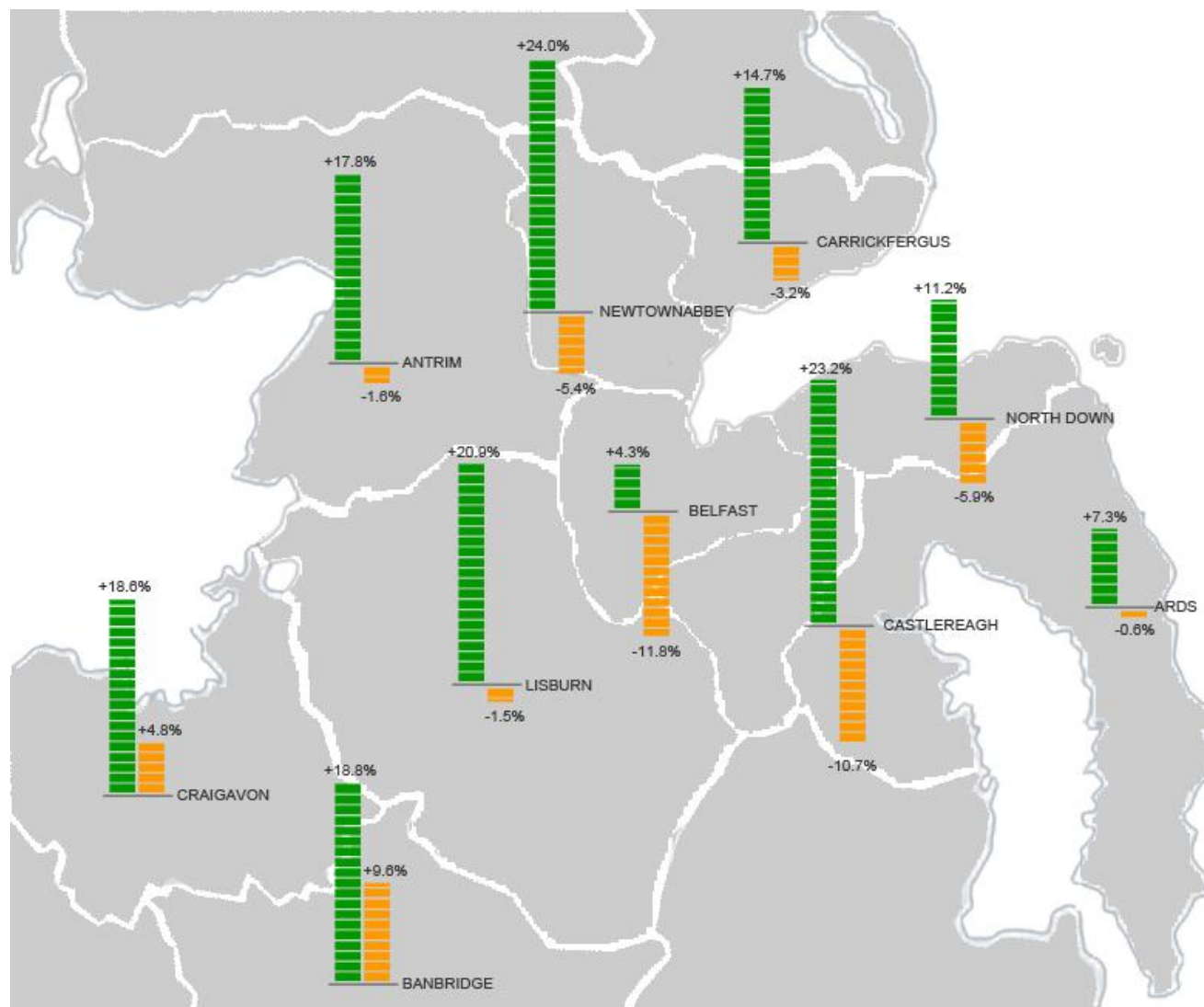
Population growth in Belfast and other UK cities 1951 - 2011



Belfast region Population Growth by Community Background

growth in population with
Protestant background

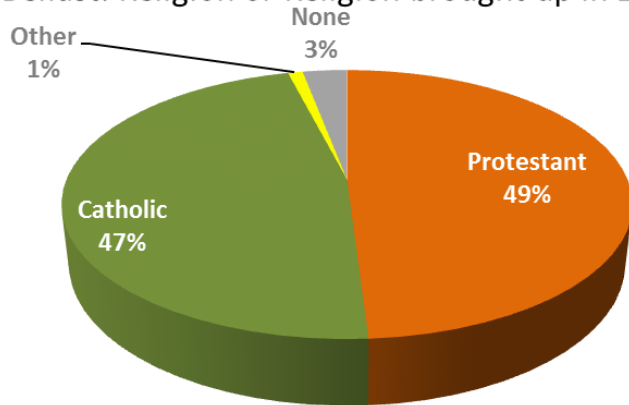
growth in population with
Catholic background



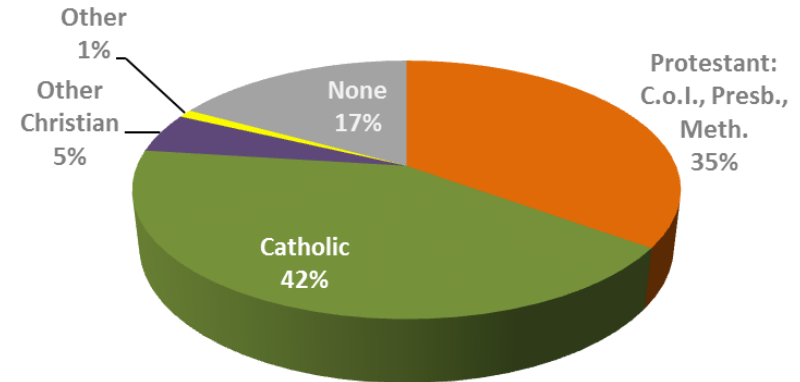
Belfast Religious Composition

2001 & 2011

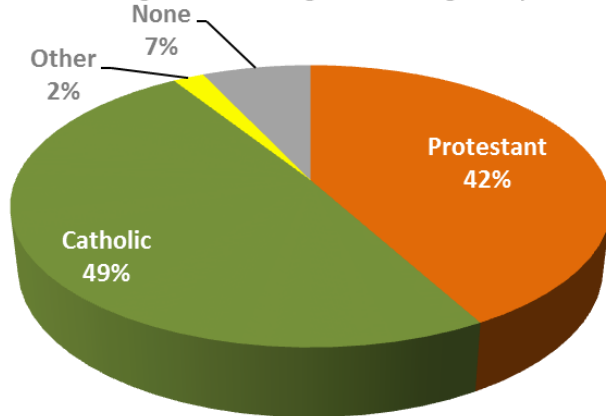
Belfast: Religion or Religion brought up in 2001



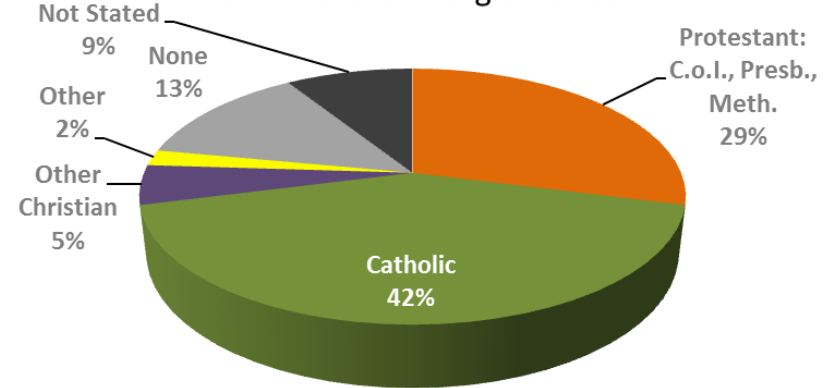
Belfast: Stated Religion 2001



Belfast: Religion or Religion brought up in 2011



Belfast: Stated Religion 2011

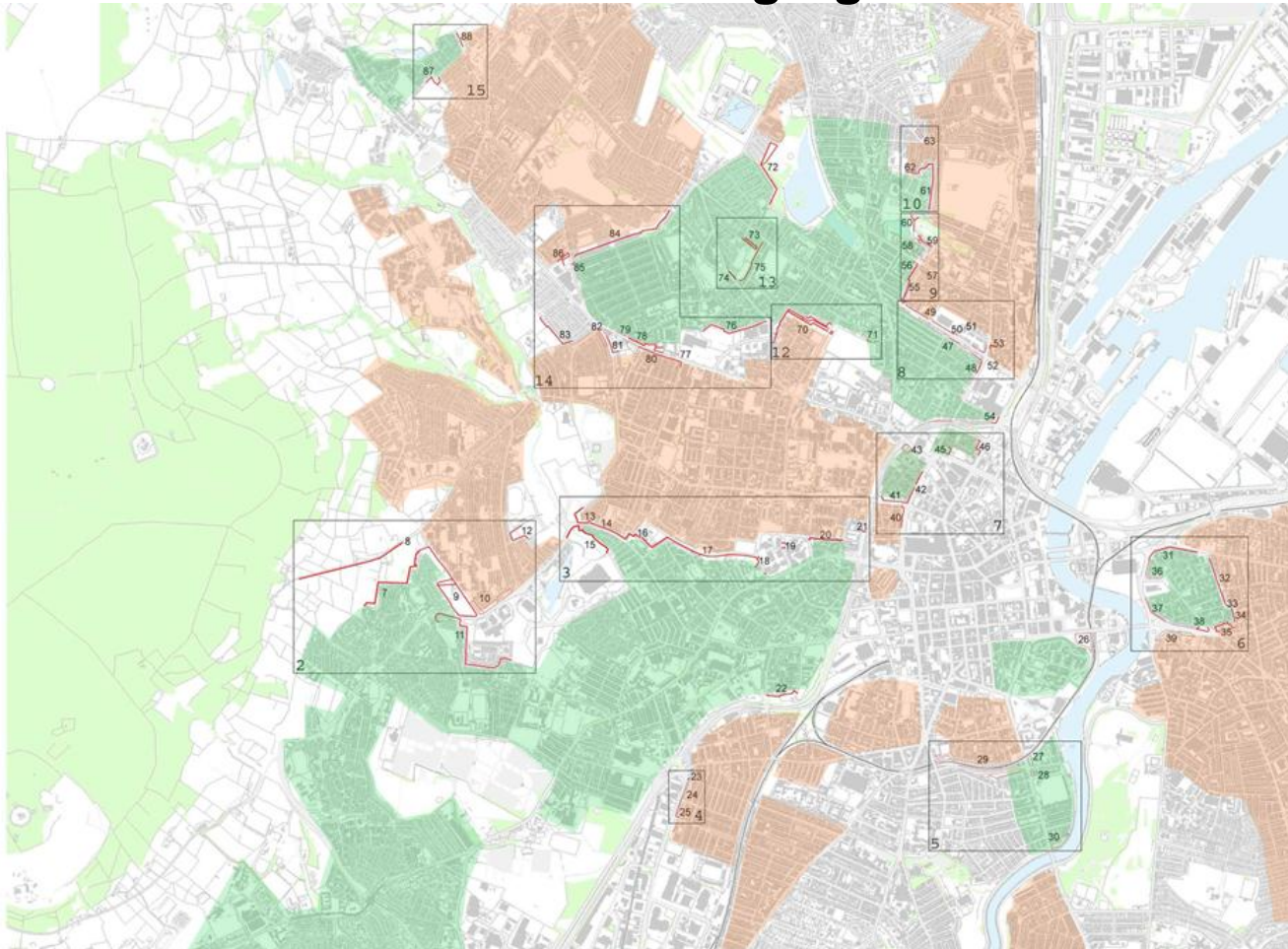


1970's & 1980's: Deepening of segregation

Deindustrialisation, large scale urban redevelopment & the Troubles



1990's: Stabilisation of segregation



2000's: Reduction of segregation



North Belfast: Patchwork of segregation



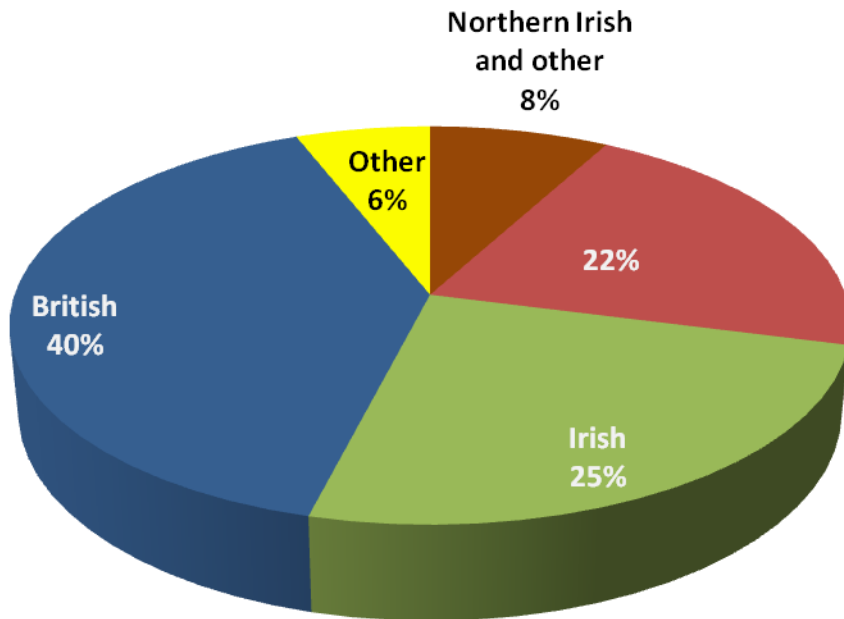
‘Mixed’ neighbourhoods

In north Belfast

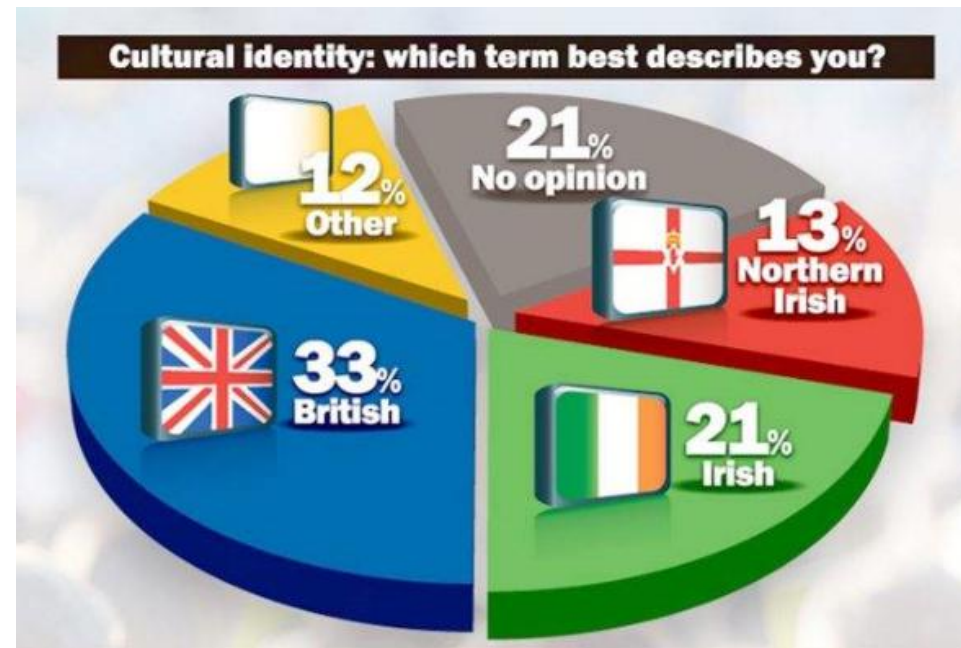
2011	% Catholic background 2011	% Protestant background 2011
95GG14 – Cavehill	57.14	37.70
95GG13 – Castlevue	38.14	54.19
95GG24 – Fortwilliam	41.28	50.34
95GG32 – Legoniel	48.24	45.40

2011	% Catholic background 2011	% Protestant background 2011
95GG14S1 - Cavehill 1	50.40	44.53
95GG14S2 - Cavehill 2	79.40	16.22
95GG14S3 - Cavehill 3	41.78	52.18
95GG13S1 - Castlevue 1	20.11	69.62
95GG13S2 - Castlevue 2	63.70	30.19
95GG13S3 - Castlevue 3	25.47	67.32
95GG24S1 - Fortwilliam 1	56.48	36.60
95GG24S2 - Fortwilliam 2	13.77	76.49
95GG24S3 - Fortwilliam 3	54.32	37.35
95GG32S1 - Legoniel 1	70.54	23.86
95GG32S2 - Legoniel 2	18.54	74.05
95GG32S3 - Legoniel 3	32.27	60.90

NI National Identity Census 2011



Belfast Telegraph Poll 2013

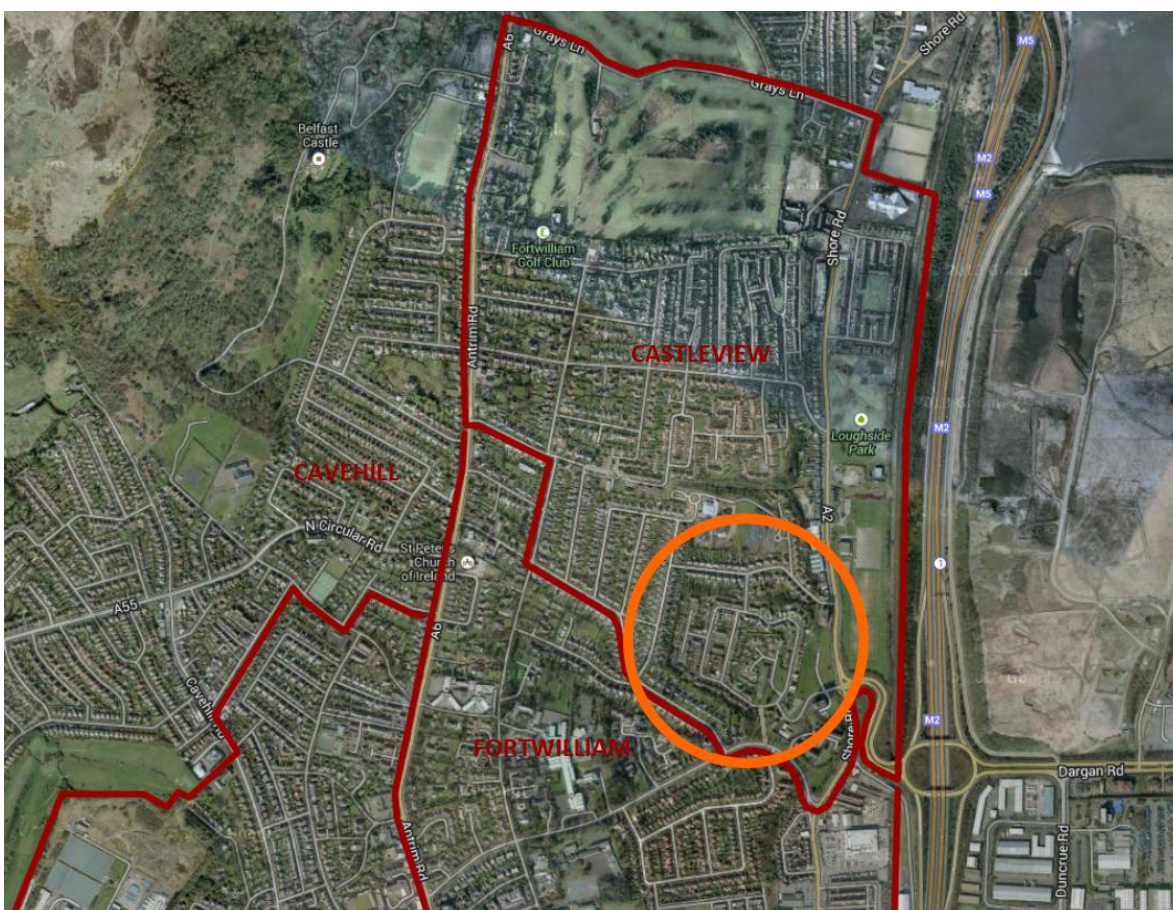


The negative impact of segregation

Belfast Wards in NI's Most Deprived Decile 1991 -2010

1991	2001	2005	2010	More than 70% Single Background 2001	Dominant Community Background 2011
Ardoyne	Ardoyne	Ardoyne	Ardoyne	Yes	93% CCB
Ballymacarett	Ballymacarrett	Ballymacarrett	Ballymacarrett	No	52% CCB
Beechmount	Beechmount	Beechmount	Beechmount	Yes	91% CCB
Blackstaff	Blackstaff	Blackstaff	Blackstaff	Yes	72% PCB
Clonard	Clonard	Clonard	Clonard	Yes	91% CCB
Crumlin	Crumlin	Crumlin	Crumlin	Yes	82% PCB
Duncairn	Duncairn	Duncairn	Duncairn	Yes	64% PCB
Falls	Falls	Falls	Falls	Yes	88% CCB
Glencairn	Glencairn	Glencairn	Glencairn	Yes	76% PCB
Glencolin	Glencolin	Glencolin	Glencolin	Yes	93% CCB
Island	Island	Island		Yes	70% PCB
New Lodge	New Lodge	New Lodge	New Lodge	Yes	89% CCB
Shaftesbury	Shaftesbury	Shaftesbury	Shaftesbury	No	47% PCB
Shankill	Shankill	Shankill	Shankill	Yes	85% PCB
The Mount	The Mount	The Mount	The Mount	Yes	68% PCB
Upper Springfield	Upper Springfield	Upper Springfield	Upper Springfield	Yes	94% CCB
	Waterworks	Waterworks	WaterWorks	Yes	88% CCB
Whiterock	Whiterock	Whiterock	Whiterock	Yes	93% CCB
Woodstock	Woodstock	Woodstock	Woodstock	Yes	63% PCB
Woodvale	Woodvale	Woodvale	Woodvale	Yes	87% PCB

Mount Vernon



Girdwood site





Northern Ireland
Assembly



The Open University



Knowledge Exchange Seminar Series (KESS)

...is a forum that encourages debate on a wide range of research findings, with the overall aim of promoting evidence-based policy and law-making within Northern Ireland