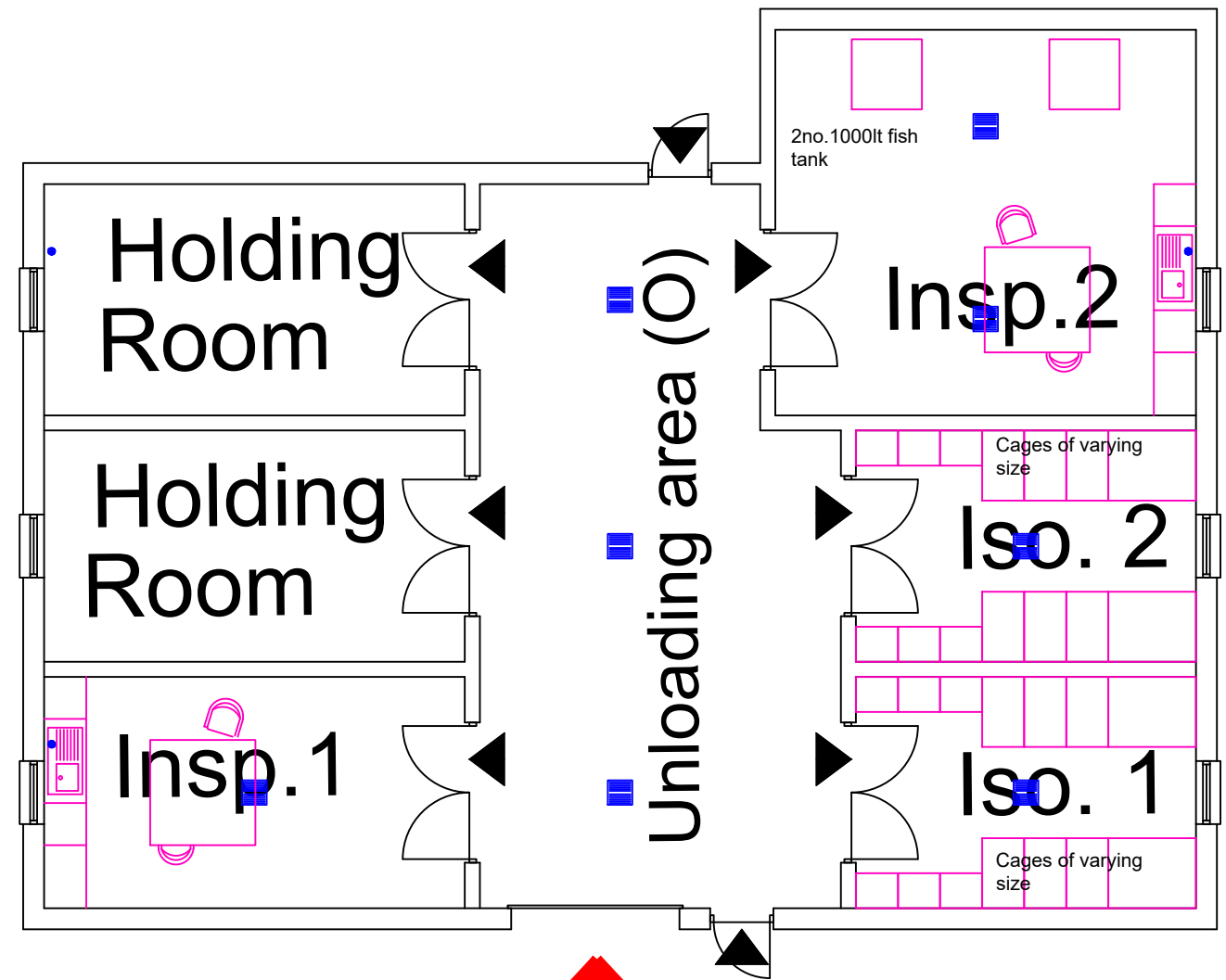
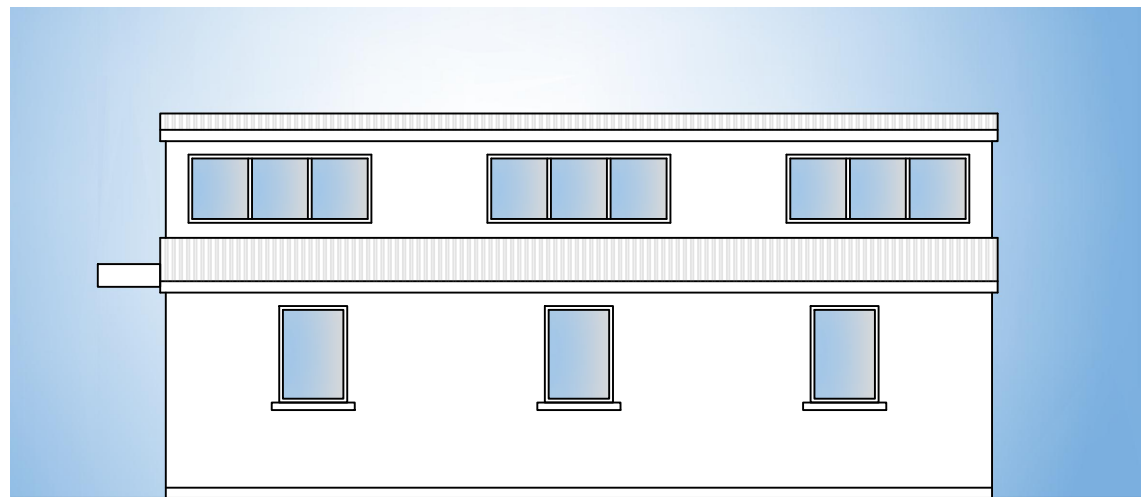


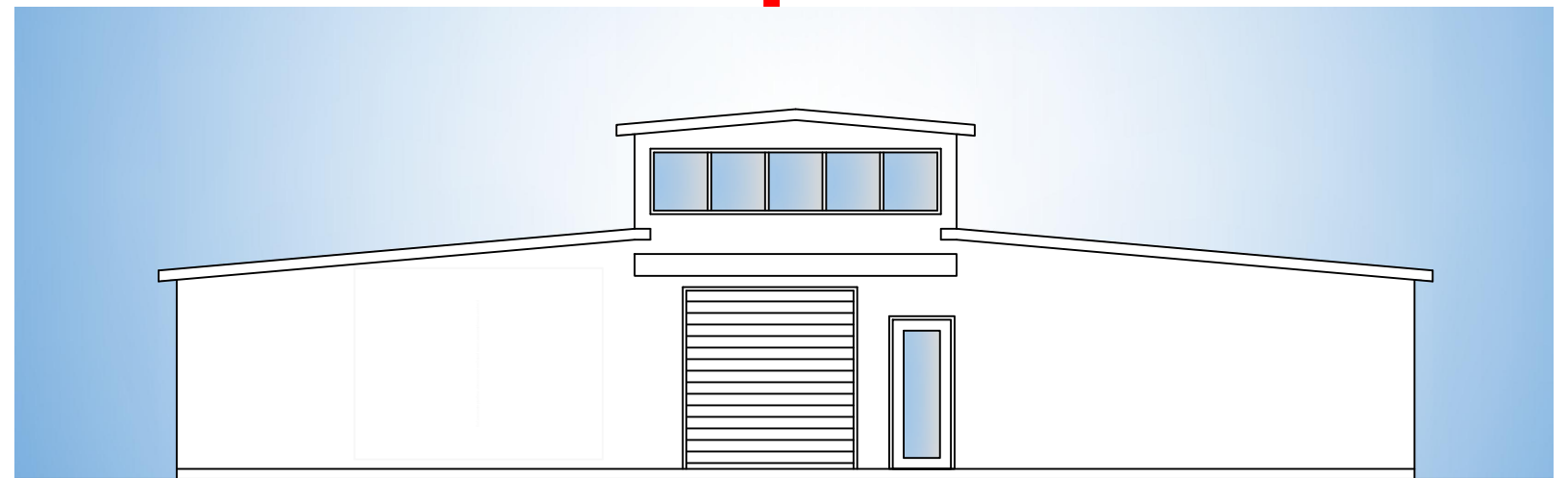
GENERAL NOTES	
Category	Requirements
Drainage	All drainage connected to foul system. Underground tank suitably sized to accommodate drainage from all livestock and equine facilities with level alarm to prevent overflow.
Finishes	<b>Inspection Rooms, Stores Isolation &amp; Unloading Bays</b>
Floors	Non-slip, food grade, washable coating with perimeter coving for easy cleaning
Walls	To be smooth, anti-bacterial, washable paint or equivalent washable surface.
Ceilings	To be of plasterboard construction with anti-bacterial washable paint
Inspection Rooms	Equipment includes stainless steel kitchen facilities, fridge, dishwasher, sterilizer, inspection table with lamp, hot & cold water.



Proposed Plan 1:100



Side Elevation



Entrance Elevation

Client:	EU Designations of Northern Ireland Portal Facilities	Drawing:	OTHER COMMERCIAL TRANSPORT ANIMALS - LARNE	Branch:	Arch 01		
	Job:		Point of Entries NI	Scale:	1:100@A3	Branch Manager:	Peter White
				Drawn by:	A Burns	Date:	Jan 2020
				Verified by:	M McKeever	Date:	Jan 2020
				Drawing No:	691999AQD /LNE/016	Amendment:	
						A	B