



**PERTH AND KINROSS COUNCIL**

**EDUCATION AND CHILDREN'S SERVICES**

**CONSULTATION REPORT**

**REPORT ON THE OUTCOME OF THE CONSULTATION  
RELATING TO THE PROPOSAL TO CLOSE STRONE OF  
CALLY PRIMARY SCHOOL**

**22 MAY 2011**

This Consultation Report has been issued by Perth and Kinross Council in accordance with the Schools (Consultation) (Scotland) Act 2010.

- Contents -

1. INTRODUCTION
2. BACKGROUND
3. CONSIDERATIONS
4. THE CONSULTATION PROCESS
5. THE PUBLIC MEETINGS
6. RESPONSES TO THE CONSULTATION EXERCISE
7. EDUCATION AUTHORITY RESPONSE TO WRITTEN AND ORAL REPRESENTATIONS
8. HER MAJESTY'S INSPECTORATE OF EDUCATION (HMIE) REPORT
9. RURAL SCHOOLS – COMPLIANCE WITH SECTION 12 OF THE SCHOOLS (CONSULTATION) (SCOTLAND) ACT 2010  
  
Viable Alternatives to Closure  
Effect on Local Community  
Travelling Arrangements
10. ALLEGED OMISSIONS OR INACCURACIES
11. COMPLIANCE WITH SECTION 9(1) OF THE SCHOOLS (CONSULTATION) (SCOTLAND) ACT 2010
12. OPPORTUNITY TO MAKE REPRESENTATIONS TO SCOTTISH MINISTERS IN TERMS OF SECTION 15(4) OF THE SCHOOLS (CONSULTATION) (SCOTLAND) ACT 2010
13. LEGAL ISSUES
14. PERSONNEL IMPLICATIONS
15. ENVIRONMENTAL ISSUES
16. CONCLUSION
17. RECOMMENDATIONS

- Appendices -

Appendix 1 Note of public meeting 23 February 2011

Appendix 2 Note of public meeting 28 February 2011

Appendix 3 Summary of consultation responses

Appendix 4 HMIE report

**PERTH AND KINROSS COUNCIL**  
**EDUCATION AND CHILDREN'S SERVICES**

This report has been prepared following a review of the proposal that:

- Education provision at Strone of Cally Primary School be discontinued with effect from Wednesday 27 June 2012, or as soon as possible thereafter;
- That the pupils of Strone of Cally Primary School receive their education at Kirkmichael Primary School, from Tuesday 14 August 2012 or as soon as possible thereafter; and
- That the delineated area of Kirkmichael Primary School be extended to subsume the whole delineated area of Strone of Cally Primary School from Tuesday 14 August 2012.

Having had regard (in particular) to:

- a) Relevant written representations received by the Council (from any person) during the consultation period;
- b) Oral representations made to it (by any person) at the public meetings held on 23 February 2011 and 28 February 2011; and
- c) HMIE's report on the proposal.

## **1. INTRODUCTION**

This is a consultation report prepared in compliance with the Schools (Consultation) (Scotland) Act 2010 on the above proposal.

1.1 The purpose of this report is to:

- Provide a record of the total number of written responses made during the Statutory Consultation period;
- Provide a summary of the written responses;
- Provide a summary of oral representations made at the public meetings held on 23 February 2011 and 28 February 2011;
- Provide a statement of the Council's response to those written and oral representations;
- Provide the full text of Her Majesty's Inspectorate of Education report and a statement of the Council's response to this report;

- State how the Council reviewed the above proposal following the representations received during the Statutory Consultation period and the report from Her Majesty’s Inspectorate of Education;
- Provide details of any omission from, or inaccuracy in, the Proposal Paper and state how the Council acted upon it;
- State how the Council has complied with Section 12 of the Schools (Consultation) (Scotland) Act 2010 when reviewing the above proposals; and
- Provide an explanation of how representations can be made to the Scottish Ministers in terms of Section 15(4) of the Schools (Consultation) (Scotland) Act 2010.

## **2. BACKGROUND**

- 2.1 On 30 June 2010, the Council approved the report Securing the Future – Towards 2015 and Beyond (Report 10/357 refers). This report set out our continuing strategy for securing the future, aiming to support the delivery of savings through revised service delivery models and ongoing improvement activities in the Council. Education and Children’s Services Service Review Programme within this report contains a re-design project to “review the school estate”.
- 2.2 On 25 August 2010, the Lifelong Learning Committee approved the report Review of School Estate – Strone of Cally Primary School (Report 10/425 refers). This report sought approval to proceed with undertaking an Options Appraisal and, if appropriate, produce a Proposal Paper containing an Educational Benefits Statement in respect of Strone of Cally Primary School.
- 2.3 An Options Appraisal was duly undertaken. This report recommended the preferred option to be the closure of Strone of Cally Primary School. A Proposal Paper was then produced in preparation for all documents to be presented to the Lifelong Learning Committee in a transparent and accountable fashion.
- 2.4 On 12 January 2011, the Lifelong Learning Committee approved the report Statutory Consultation – Strone of Cally Primary School (Report 11/06 refers). This report instructed the Executive Director (Education and Children’s Services) to formally consult the appropriate bodies and persons in relation to the proposal to close Strone of Cally Primary School, in terms of the Schools (Consultation) (Scotland) Act 2010.
- 2.5 All Lifelong Learning Committee reports, Options Appraisal Report and Proposal Paper referred to above are all available on the Council’s website [www.pkc.gov.uk](http://www.pkc.gov.uk).

### **3. CONSIDERATIONS**

The main considerations relating to the proposed closure of Strone of Cally Primary School are fully explained in the proposal paper and the main points are highlighted below:

- 3.1 The school roll has fallen significantly in recent years.
- 3.2 There was only 1 pupil due to be in attendance for school session 2010/2011 with no further pupils expected to enrol at Strone of Cally Primary School.
- 3.3 Strone of Cally Primary School had been operating at 4% occupancy during school session 2009/2010.
- 3.4 Almost all parents living within Strone of Cally Primary School catchment area had made successful placing requests for their children to attend neighbouring schools, with the majority attending Kirkmichael Primary School.
- 3.5 As a consequence of the above factors, Strone of Cally Primary School was mothballed at the end of school session 2009/2010.
- 3.6 Kirkmichael Primary School, which is approximately 7.3 miles from Strone of Cally Primary School, has sufficient capacity to accommodate pupils living within the catchment area for Strone of Cally Primary School.
- 3.7 The closure of Strone of Cally Primary School and the redelineation of the catchment area to Kirkmichael Primary School will offer a wide range of opportunities for children to achieve their full potential as successful learners, confident individuals, responsible citizens and effective contributors. Pupils will benefit from greater opportunities from being part of a social context in which they can build relationships with different groups and individuals, develop social skills, meet challenges and exercise responsibilities as members of a social group. They will be able to interact and socialise with groups of children of their own age and gender, take part in team activities and move with their peers to secondary school.

### **4. THE CONSULTATION PROCESS**

- 4.1 A Proposal Paper was considered and approved by Perth and Kinross Council's Lifelong Learning Committee at its meeting on 12 January 2011. The Proposal Paper was issued on 26 January 2011 to those individuals and bodies listed under Distribution within the document. The Proposal Paper was also published on the Council's website: [www.pkc.gov.uk](http://www.pkc.gov.uk).

The Proposal Paper made clear to consultees that the consultation period would run until Friday 25 March 2011 – a period of 40 school days in total which exceeds the required period of at least 30 school days.

4.2 The proposal on which consultation took place was that:

Education provision at Strone of Cally Primary School be discontinued with effect from Wednesday 27 June 2012, or as soon as possible thereafter; that the pupils of Strone of Cally Primary School receive their education at Kirkmichael Primary School, from Tuesday 14 August 2012 or as soon as possible thereafter; and that the delineated area of Kirkmichael Primary School be extended to subsume the whole delineated area of Strone of Cally Primary School from Tuesday 14 August 2012.

4.3 The requirements for consulting on proposed school closures are set out in the Schools (Consultation) (Scotland) Act 2010.

- A proposal paper was issued on 26 January 2011. A copy of this document was provided free of charge to the consultees listed within the document.
- The proposal paper was published on the Perth and Kinross Council website [www.pkc.gov.uk](http://www.pkc.gov.uk).
- Copies were also available at the Council Headquarters, Kirkmichael Primary School, Blairgowrie Social Work Office, Blairgowrie library and Bridge of Cally Post Office.
- An advertisement ran in the Courier and Advertiser, Blairgowrie Advertiser and Perthshire Advertiser newspapers on 26 and 28 January 2011.
- Two public meetings were held to discuss the proposal. The first was held at Kirkmichael Village Hall on 23 February 2011. The second was held on 28 February 2011 at Bridge of Cally Village Hall.
- The Consultation period ended on 25 March 2011.
- Her Majesty's Inspectorate of Education involvement consisted of: the proposal document being sent to them, attendance at the public meetings and meeting with a sample of pupils, staff and parents. They also received a copy of all written representations. They then prepared a report on the educational aspects of the proposal. This is attached as Appendix 4.

4.4 The affected schools were identified as Strone of Cally Primary School and Kirkmichael Primary School. In accordance with statutory requirements, the following persons were consulted:

- The Parent Council (if any) of the affected schools (Kirkmichael Primary School was the only affected school with a Parent Council)

- The parents of the pupils and children who may attend the affected schools.
- Parents of children expected to attend an affected school within two years of the date of publication of this proposal document.
- The teaching and ancillary staff at the affected schools.
- The trade union representatives of the above staff.
- The Community Councils.
- Relevant users of the affected schools.
- Elected Members of Perth and Kinross Council.
- The Constituency MSP and List MSPs covering the Constituency.
- The Constituency MP.
- The Executive Director, The Environment Service, Perth and Kinross Council.
- Tayside Contracts (providers of catering and cleaning services to schools).
- HMIE.

4.5 The number of copies of the proposal paper issued was 220.

4.6 During the consultation period representations were sought from interested parties, either in oral or written form or electronically. A specific email account was set up by the Council to receive enquiries on the proposal or representations.

4.7 This Consultation Report is the Council's response to the issues raised during the consultation period on the Proposal Paper.

4.8 This Consultation Report will be published for a period of six weeks before a final decision is taken by Perth and Kinross Council.

## **5. THE PUBLIC MEETINGS**

5.1 A public meeting was held in Kirkmichael Village Hall on Wednesday 23 February 2011. No members of the public attended. A full note of the meeting is attached as Appendix 1.

5.2 A public meeting was held in Bridge of Cally Village Hall on Monday 28 February 2011. This meeting was better attended, with four members of the public present. A full note of the meeting is attached as Appendix 2 which details the questions and issues raised at the meeting.



- 5.3 The small number of attendees at the public meetings and the questions and issues raised, indicate that almost all the parents and community members from both Bridge of Cally and Kirkmichael have no concerns with the Council's proposal to close Strone of Cally Primary School. This reinforces the Council's view that the proposal enhances the sustainability of another remote rural school by expanding its catchment area.

## 6. RESPONSES TO THE CONSULTATION EXERCISE

In all, 1 written response was received from a parent of a former pupil of Strone of Cally Primary School. This was received on 14 February 2011.

In summary, the written and oral responses highlight:

- concerns that catchment areas are not working as parents are not sending their children to their catchment school as a result of parental choice.
- suggestion that Strone of Cally Primary School could have 4-5 children in the school if parents sent their children to their catchment school.
- query regarding the Council's projected roll figures.
- concern regarding the travel distance if a child needs to attend the doctor or dentist during the school day.
- concern that if new houses are built, and schools fill up, children would have to attend a school in Blairgowrie and a query was raised as to why the Community Campus <sup>1</sup> was not built bigger.
- concern that the school lunches do not travel well.
- query regarding the accuracy of the Scottish Government classification of the school being "remote rural".

## 7. EDUCATION AUTHORITY RESPONSE TO WRITTEN AND ORAL REPRESENTATIONS

### 7.1 Future Pupil Numbers and Roll Projections

**A concern was raised that catchment areas are not working as parents are not sending their children to their catchment school as a result of parental choice.**

The Council is aware of the number of children who live in Strone of Cally catchment area but whose parents have chosen to send them to other schools.

---

<sup>1</sup>

New Public Private Partnership School in Blairgowrie

This is the parents' legal right to send their child to the school of their choice and Councils are required by law to grant these requests wherever possible.

Councils may only refuse placing requests where there is a specific legal reason for doing so, and this decision is not taken lightly as parents have a statutory right of appeal to an Appeal Committee and the Sheriff Court if their request is refused by the Council.

**It was suggested that within 1 year Strone of Cally Primary School could have 4-5 children in the school.**

The Council is aware of the families with children living in the catchment area and explained 7 catchment area children for Strone of Cally Primary School attend Kirkmichael Primary School and 3 catchment area children attend Rattray Primary School. Parents have made a conscious decision not to send their children to Strone of Cally Primary School.

**A concern was raised that the projected roll figures are wrong.**

It is assumed that if the eldest child attends a school by parental choice, then younger siblings will attend that same school. No parent from Strone of Cally has indicated that they would send their younger child to a different school from their older siblings. Therefore, the projected roll figures are based on the choices that parents in Strone of Cally Primary School catchment area have already made for their children and younger siblings are projected to attend the same school as their elder siblings. Perth and Kinross Council is not in the business of closing a school when there is a requirement for it to remain open and do not do so. The population in the area is in decline. Within the Perth and Kinross area, 44% of schools are classified as accessible rural, 9% are classified as remote rural and 7% are classified as very remote rural.

The September 2010 census has also been examined and there is no significant change to the pupil rolls since the start of the review process.

**How many children it would take to keep the school open?**

The Council gave a presentation which detailed the criteria used which looked at the viability of schools with less than 15 pupils. There is no definitive figure as several criteria are considered; schools with single pupils, less than five pupils all from the same family or where there are no children from the catchment area attending. The Local Authority seriously considers social and emotional factors for such pupils.

## 7.2 Transport Issues

### **Why children are being “ferried” to school, for example, by taxis?**

Councils are required by law to provide free home to school transport for pupils who attend their catchment school and live more than the statutory walking distance from that school. In primary schools, that is 2 miles. In rural areas it is often the case that there is no public transport and taxis require to be used in some cases.

### **What are the transport costs for travelling from Bridge of Cally to Kirkmichael?**

Currently the home to school transport costs for pupils travelling from Bridge of Cally to Kirkmichael are approximately £13,000 per year. Perth and Kinross Council’s transport costs are £6.2 million per year for transporting primary and secondary pupils.

### **If a child needs to attend the doctor or dentist, it is a longer trip from Kirkmichael Primary School compared with from Strone of Cally Primary School.**

It was explained that a child should only be taken out of school in an emergency and this should not be a regular occurrence and would not be a material consideration affecting the proposal.

### **Why is Bridge of Cally classed as “remote rural”?**

Bridge of Cally is a “settlement of fewer than 3,000 people and with a drive time of between 30 and 60 minutes to a settlement of 10,000 or more”. This criterion has been provided by the Scottish Government. There are only approximately 8,000 people living within the settlement of Blairgowrie, Rattray and Carsie, therefore Perth is the nearest settlement with a population of more than 10,000 people, classifying both Strone of Cally and Kirkmichael as remote rural schools. These definitions have been set by the Scottish Government and officers confirmed with colleagues in Planning that the populations were still within these categories.

## 7.3 Housebuilding and School Capacities

### **If new houses are built, and Kirkmichael school fills up, will Kirkmichael catchment children have to attend Newhill Primary School?**

The formula used to calculate the number of children projected to be generated from housing developments was explained to parents. The Main Issues Report is part of the Local Development Plan’s preparation to identify the main land-use planning issues within Perth and Kinross.

Education and Children's Services has looked at the Main Issues Report and only small housing applications have been submitted for Strone of Cally and Kirkmichael which raised no significant issues. The Council is aware of planned new houses in Blairgowrie. The Community Campus has been built so it can be expanded if necessary. The Council has a Developer Contributions policy which is implemented in cases such as these.

**Why was the Community Campus not built bigger?**

Occupancy levels of schools were explained and the rationale of not building schools which are then under occupied.

**It was suggested that Newhill Primary School was too small before it was built.**

Schools are now built so they can be extended to provide flexibility. Developer contributions were discussed again explaining if the school capacity reaches above 80%, housing developers must contribute to allow for the expansion of a school.

**7.4 Miscellaneous**

**Does Perth and Kinross Council own the ground Strone of Cally Primary School is built on?**

Yes, Perth and Kinross Council does own the land.

**Who has the final decision to close the school?**

Lifelong Learning Committee will make this decision. Thereafter, representations can be made to Scottish Ministers in accordance with the terms of the legislation.

**It was suggested that the school lunches do not travel very well and it was suggested that salmonella could be developed if the food is transported beyond Bridge of Cally to Kirkmichael Primary School.**

There have been no problems reported with the food provided and the number attending for school lunches at Kirkmichael Primary School has increased. Many schools in Perth and Kinross do not have school kitchens and school lunches are transported every day

**8. HER MAJESTY'S INSPECTORATE OF EDUCATION (HMIE) REPORT**

- 8.1 In accordance with the Schools (Consultation) (Scotland) Act 2010, a report was produced by HMIE on the educational aspects of the proposal.

- 8.2 HMIE visited Kirkmichael Primary School on 20 April 2011 to speak to pupils, parents and staff. They attended the public meetings on 23 February 2011 and 28 February 2011 and had the opportunity to review in detail the proposal paper and the one written response.
- 8.3 The HMIE report is reproduced in full (Appendix 4).
- 8.4 The report broadly supports the proposals and is summarised below:
- HMIE acknowledge that the proposal would offer potential educational benefits to children who would have attended Strone of Cally Primary School in terms of the social and personal development by moving to a school which can provide a suitable range of curriculum opportunities and activities (HMIE para 4.1).
  - HMIE point out that the pupils of Kirkmichael Primary School may also benefit from the proposal, for example through enhanced opportunities to build friendships and to extend their social skills (HMIE para 4.1).
  - HMIE noted a few parents from Strone of Cally who had chosen to place their children in Kirkmichael Primary School were positive about the proposed closure and felt that their children had benefited socially from the larger numbers of children in Kirkmichael Primary School. Those parents also commented positively on the transport which had been provided as a result of the mothballing of Strone of Cally Primary School which would continue if the proposal was accepted.
  - HMIE indicate that there will be no immediate impact from the proposal and limited impact in the next six years as there are no pupils currently attending Strone of Cally Primary School (HMIE para 4.1).
  - HMIE acknowledge that the Council's proposal has the support of almost all parents and of members of the local community (HMIE para 4.1).
  - In addition, it is noted that the Council has given consideration to other alternative options, to the possible impact on the wider community and to any environmental consequences and there are no significant issues in relation to any of the above, and has taken full account of the remote rural nature of the schools concerned in the proposal (HMIE para 4.2).
  - The Council welcomes the report from HMIE and accepts its findings.

## **9. RURAL SCHOOLS – COMPLIANCE WITH SECTION 12 OF THE SCHOOLS (CONSULTATION) (SCOTLAND) ACT 2010**

9.1 Strone of Cally Primary School is a remote rural school, and Section 12(3) of the Schools (Consultation) (Scotland) Act 2010 therefore requires the Education Authority to have special regard to the following factors:

- any viable alternative to the closure proposal.
- the likely effect on the local community as a consequence of the proposal.
- the likely effect caused by different travelling arrangements that may be required.

### 9.2 Viable Alternatives to Closure

A Service Manager was tasked to examine in detail all viable alternatives to closure, consulting those affected and write an Options Appraisal Report.

Five possibilities were flagged up in the Options Appraisal. The first possibility was to keep Strone of Cally Primary School open. This would not address the educational concerns relating to one child within the school. Future possible developments in the area still indicated no viable school roll was ever likely to be achieved for Strone of Cally Primary School.

The second possibility was to continue to keep Strone of Cally Primary School mothballed, subject to regular review. If Strone of Cally Primary School was left mothballed on an indefinite basis, Perth and Kinross Council would incur annual costs to maintain the building. Unoccupied buildings can deteriorate more rapidly than operational premises and can become a focus for vandals whether the premises are located in urban or rural areas. The main building has been classed as requiring replacement on a medium term basis and this would incur additional capital expenditure, depending upon the scale of replacement accommodation predicted to be required.

The third option was to close Strone of Cally Primary School and transfer any pupils to Kirkmichael Primary School.

The fourth possibility was to change the school catchment area – basically extending the catchment area of Strone of Cally Primary School into a neighbouring school catchment area by closing Kirkmichael Primary School. No survey of parental opinion has been undertaken as there has been no demand for this. There are no signs that parents of children in neighbouring schools would welcome such a change, or indeed would be willing to accept any change; were any such change to be proposed it is anticipated that it would be opposed by families living in whichever areas were proposed for

transfer and, furthermore, if it were to be imposed, parents would be likely to exercise their statutory rights and seek to place their children in another school. Further, this would simply make the neighbouring schools smaller and less sustainable in the long term.

The possible potential primary pupils that could require primary education within the Strone of Cally and Kirkmichael Primary Schools combined catchment area is 53 pupils. This exceeds the capacity of Strone of Cally Primary School. This possibility would not therefore be viable.

As a fifth possibility, a different amalgamation of Strone of Cally with Rattray Primary School rather than a merger between Strone of Cally and Kirkmichael in the Kirkmichael building was considered. Although a different amalgamation with Rattray Primary School may be possible, Strone of Cally and Kirkmichael are the two schools in the nearby area which are close to each other and the capacity of Kirkmichael is larger than that of Strone of Cally. The majority of parents living within the catchment area for Strone of Cally Primary School have already opted to send their children to Kirkmichael Primary School. The most logical merger, therefore, is the one being proposed. This also strengthens the viability of Kirkmichael Primary School in the longer term.

The further possibility is to seek to encourage greater use of the current school building. No decision has been taken as to what is likely to happen to the building should the proposal to close the school go ahead, and it is accepted that continuing consultation with the community would be important in this context. It should be noted that Bridge of Cally is well served by other community facilities, namely the village hall and the hotel. The school has not been used outwith normal school hours for any non-school related activities.

It can be concluded that there is no demand or need to use the school in this way and the Council pushed the use of the school, then that understandably would impact on the viability of other facilities in Bridge of Cally as the demand for use is not sufficient for three facilities.

In addition, making greater use of the building would not address the fundamental educational concerns about a school with an exceptionally small roll.

### 9.3 Effect on Local Community

This issue did not come up in any of the responses through the consultation exercise. It is very difficult to quantify objectively how critical the existence of the school is to the vibrancy of the local community. However, as previously indicated, in this case it seems clear that the loss of the school building will not in itself pose any major difficulties for the community. On the plus side, it is reasonable to hope that the merger of the two schools may mean that the two communities build on the merger to effect more joint community ventures and – to an extent – the promotion of a larger Kirkmichael/Bridge of Cally community to the benefit of all local residents. Conversely, it has to be recognised that some local residents will, at present, almost certainly see their community as comprising Bridge of Cally only. In these circumstances, the Council's Community Learning Service would be able to offer assistance, if needed and requested, to ensure the Bridge of Cally community retains its current level of community commitment.

The fact that schools can and do play a role in the life of many communities cannot be denied. However, in the case of Strone of Cally Primary School, the Proposal Paper identifies the fact that, other than school-based organisations, there are currently no lessees of the current building. This is explained at least partly by the fact that there is a very well appointed Village Hall in Bridge of Cally. In the present case, it can therefore reasonably be asserted that the current school building does not perform an absolutely vital function as a community facility as it is not being used as a community facility.

Much more difficult to quantify is the contribution which the existence of a school makes to a wider community. There may be an argument that the sustainability of a community could be put in jeopardy were the school to close permanently. However, in common with all other communities, a significant proportion of the local population will have no direct links with the school and it does seem unlikely that a community such as Bridge of Cally with the facilities available to it would wither away if the school were to close. Parents here already clearly believe their children should be in a larger rural school and have demonstrated this by making placing requests to neighbouring schools. This has not had a detrimental effect on the community nor has it prevented families from moving into this community to live. It is possible to argue, on the other hand, that over the years closer links may be formed with neighbouring communities, possibly to the benefit of all. In other locations when schools have closed, communities have remained vibrant.



## 9.4 Travelling Arrangements

Specific concerns have been raised about the travel distances, and it is acknowledged that continuing dialogue with parents will be required to offer adequate reassurance, and to ensure that care has been taken to identify and address any specific concerns. In addition, reassurance about the lengths of journeys was offered in the original Proposal Paper. The travel distance to Kirkmichael Primary School is not excessive and pupils attending Kirkmichael Primary School already make this journey. Parents were already undertaking this at their own expense as a result of successful placing requests.

There were no transport contracts in place to Strone of Cally Primary School as there were no pupils entitled to transport. The travelling distance from Strone of Cally Primary School to Kirkmichael Primary School is 7.3 miles and is estimated to take 20 minutes.

It has been recognised that adverse weather in the winter currently impacts on travel arrangements in this area. This is not considered to be a material issue as localised severe weather affects a much wider range of schools than those affected by the proposal.

The environmental impact if Strone of Cally Primary School was to close and the pupils transfer to Kirkmichael Primary School, is that there would be an environmental impact from the transporting of approximately 3 potential pupils. However, this would be offset by the need no longer to run the Primary School. At Kirkmichael Primary School, the 3 potential pupils could be accommodated without any significant additional impact.

Staff who reside outwith the area who transfer to Kirkmichael Primary School may be required to travel an additional distance of 7.3 miles to school. If staff are deployed to another educational establishment other than Kirkmichael Primary School, this will be conducted under existing Council terms and conditions with attempts being made, where possible, to minimise any additional distance that they may require to travel.

## 10. ALLEGED OMISSIONS OR INACCURACIES

- 10.1 Section (10) (3) of the 2010 Act also places a requirement on the Council to provide details of any inaccuracy or omission within the proposal paper which has either been identified by the Council or raised by consultees. This section of the 2010 Act also requires the Council to provide a statement on the action taken in respect of the inaccuracy or omission, or, if no action was taken, to state that fact and why.

10.2 In the course of the consultation exercise, there were no areas identified by respondents as being inaccurate or omitted from the proposal paper during the consultation period.

## **11. COMPLIANCE WITH SECTION 9(1) OF THE SCHOOLS (CONSULTATION) (SCOTLAND) ACT 2010**

11.1 Section 9(1) of the Schools (Consultation) (Scotland) Act 2010 states that:

*After the Education Authority has received HMIE's report, the Authority is to review the relevant proposal having regard (in particular) to:*

- (i) written representations received by the Authority (from any person) during the consultation period,*
- (ii) oral representations made to it (by any person) at the public meeting,*
- (iii) HMIE's report.*

11.2 Following receipt of one written representation and consideration of oral representations made at a public meeting held during the consultation period, officers reviewed the proposals.

11.3 The feedback from the consultation was considered by a range of officers. This ensured that the Council met the requirements of sections 9(1), 12 and 13(3) (b) of the 2010 Act.

11.4 Members of the Education Authority have listened carefully to the points made at the public meeting and have considered equally carefully the written representation, including the HMIE report. Having reviewed the feedback from consultees, and having had special regard to the factors relevant to rural schools, officers conclude that the basis of the original proposal remained the best long term, sustainable solution to provide fit for purpose educational facilities for primary school age pupils resident in the catchment areas of both Strone of Cally Primary School and Kirkmichael Primary School.

## **12. OPPORTUNITY TO MAKE REPRESENTATIONS TO SCOTTISH MINISTERS**

12.1 When the Education Authority has made a final decision to implement the proposal, it will require to notify the Scottish Ministers of that decision, and provide them with a copy of the proposal document and consultation report. This must be done within six working days of that decision. The Scottish Ministers have a six week period from the date of that final decision to decide if they will call-in the proposal.

- 12.2 Within the first three weeks of that six week period, the Scottish Ministers will take account of any relevant representations made to them by any person. Until the outcome of the six week call-in process is known, the Authority cannot proceed to implement the proposal.
- 12.3 If the Scottish Ministers call-in the proposal, they may refuse to consent to the proposal or grant their consent to the proposal subject to conditions or unconditionally.
- 12.4 Recipients of this Consultation Report, and other readers, should note that the legislation allows for any person to make representations to Scottish Ministers within three weeks of the Council taking their final decision to implement a closure proposal. Perth and Kinross Council's Lifelong Learning Committee will take the decision on whether or not to implement this closure proposal at its meeting on 31 August 2011. If the decision is taken to implement the closure proposal, any representations to Scottish Ministers, therefore, in this context need to be with the Ministers within three weeks of this date. Therefore, any representations must be made to Scottish Ministers by 21 September 2011.
- 12.5 Anyone wishing to make representation to Scottish Ministers during the three week period referred to above should do so by email to [schoolestates@scotland.gsi.gov.uk](mailto:schoolestates@scotland.gsi.gov.uk) or in writing to:

School Estates Team  
The Scottish Government  
Area 2A (South)  
Victoria Quay  
EDINBURGH  
EH6 6QQ

### **13. LEGAL ISSUES**

- 13.1 The Council has complied in full with the requirements of the Schools (Consultation) (Scotland) Act 2010 throughout this statutory consultation.
- 13.2 The Council is mindful of its duties in respect of equality and the Equality Impact Assessment did not identify that any parent, child or young person would be treated less favourably as a result of this proposal.

13.3 Under the terms of the Schools (Scotland) (Consultation) Act 2010, it is a legal requirement that the Council should not reach any formal decision without:

- having reviewed the relevant proposal having regard, in particular, to:
  - a) relevant written representations received from any person during the consultation period;
  - b) oral representation made to it by any person at the public meetings held on 23 February 2011 and 28 February 2011;
  - c) the HMIE report;
- preparing a Consultation Report; and
- waiting until a period of three weeks starting on the day on which this Consultation Report is published in electronic and printed form has expired.

13.4 As it is the intention that this Consultation Report should be published, both electronically and in written form, on Monday 13 June 2011, this exceeds the statutory requirement to publish this report more than three weeks before consideration of the proposal by Lifelong Learning Committee on 31 August 2011.

## **14. PERSONNEL ISSUES**

There would be no compulsory redundancies of Education and Children's Services staff as a consequence of these proposals.

## **15. ENVIRONMENTAL ISSUES**

A detailed assessment of the environmental impact and sustainability of the proposal would be undertaken if approval is granted. Any likely increase in carbon level as a result of increased use of transport should be offset by reduced on-site energy consumption.

## **16. CONCLUSION**

16.1 The Council now has 3 broad options, namely:

- a) adopt the proposal;
- b) abandon the proposal and re-open Strone of Cally Primary School; or
- c) amend the proposal in some way and undertake a further consultation exercise on a new proposal.

- 16.2 In abandoning the proposal, the Council would be recognising the very limited opposition which has been raised. However, this option would retain the risk that an individual pupil in Strone of Cally would not be able to take advantage of the educational benefits identified in connection with a move to Kirkmichael Primary School. It would also mean that a disproportionately high level of expenditure per pupil would be incurred, at a time of financial pressure.
- 16.3 The one obvious way to amend the proposal is to change the alternative school proposed. The Options Appraisal already undertaken identified that, except Kirkmichael Primary School, other neighbouring schools did not have sustainable capacity to increase their catchment areas and accommodate additional pupils. The Council also has to be mindful of increasing travel journeys to and from school for pupils and would not foresee longer travel journeys for more pupils a preferred option.
- 16.4 If the Council adopts the proposal, it would be on the basis that the educational benefits set out in the Proposal Paper would materialise. There would also be a requirement that close joint planning with parents, staff and pupils is well managed in ways which are supportive to the pupils concerned, and in their long term interests.
- 16.5 The key issues that have been highlighted during the consultation period are as follows:
- Almost all the parents in the catchment area for Strone of Cally Primary School have opted to send their children to larger neighbouring schools by means of successful placing requests.
  - On the basis that there are insufficient primary school age children wishing to attend Strone of Cally Primary School, there is no requirement to retain the school.
  - On this basis, it is proposed that the catchment area for Strone of Cally Primary School is redelineated to Kirkmichael Primary School.
  - Free home to school transport would be provided for pupils living within the existing Strone of Cally Primary School catchment area to enable them to attend Kirkmichael Primary School.
  - There is no viable alternative to closure, there is likely to be minimal impact, if any, on the local community and no additional transportation arrangements required if the proposal was accepted.
  - The Council's proposals have been generally accepted by parents and the wider community.

- The report from HMIE acknowledges that the proposal would offer potential educational benefits to children who would have attended Strone of Cally Primary School in terms of the social and personal development by moving to a school which can provide a suitable range of curriculum opportunities and activities.

16.6 On the basis of the feedback received and taking account of the educational and social benefits of the proposal along with the special factors which are relevant to rural schools, it is concluded that the proposal remains the most suitable option.

## **17. RECOMMENDATIONS**

It is therefore recommended that:

- Education provision at Strone of Cally Primary School be discontinued with effect from Wednesday 27 June 2012, or as soon as possible thereafter;
- That the pupils of Strone of Cally Primary School receive their education at Kirkmichael Primary School, from Tuesday 14 August 2012 or as soon as possible thereafter; and
- That the delineated area of Kirkmichael Primary School be extended to subsume the whole delineated area of Strone of Cally Primary School from Tuesday 14 August 2012.

John Fyffe  
Executive Director (Education and Children's Services)

22 May 2011



**Perth & Kinross Council  
Education and Children's Services  
Statutory Consultation Public Meeting**

**Minute of meeting held on Wednesday 23 February 2011**

**At 7.00pm in Kirkmichael Village Hall, Kirkmichael**

**Present**

Councillor Elizabeth Grant  
Alan Taylor  
Sheena Devlin  
Karen Robertson

Convener, Lifelong Learning Committee  
Head of Support Services  
Head of Education - Early Years & Primary  
Service Manager - Business and Operations

**In Attendance**

Mary Birch – Minutes  
Helen Richardson  
Pat Fegen  
Councillor Caroline Shiers  
Councillor Barbara Vaughan  
Dr Laura-Ann Currie  
Margaret Wynd

Service Manager, Resource Management  
Service Manager, Education Services  
Perth and Kinross Council  
Perth and Kinross Council  
District Inspector, HMIE  
Headteacher, Kirkmichael Primary School

The meeting opened at 7.00 pm however no parents or members of the public attended. It was agreed to wait until 7.30pm in the event that interested parties may still arrive. At 7.30 pm there were still no interested parties in attendance and Councillor Grant closed the meeting and thanked everyone for attending.



**Perth & Kinross Council  
Education and Children's Services  
Statutory Consultation Public Meeting**

**Minute of meeting held on Monday 28 February 2011**

**At 7.00pm in Bridge of Cally Village Hall, Bridge of Cally**

**Present**

Councillor Elizabeth Grant	Convener, Lifelong Learning Committee
Alan Taylor	Head of Support Services
Sheena Devlin	Head of Education - Early Years & Primary
Karen Robertson	Service Manager - Business and Operations

**In Attendance**

Kim Smith – Minutes	
Pat Fegen	Service Manager, Education Services
Councillor Caroline Shiers	Perth and Kinross Council
Gillian Thomson	Quality Improvement Officer, Education Services
Dr Laura-Ann Currie	District Inspector, HMIE
<u>Margaret Wynd</u>	Headteacher, Kirkmichael Primary School

4 members of the public (including the late arrival)

**1. Welcome and Introductions**

Councillor Grant opened the meeting and welcomed members of public in attendance to the Statutory Consultation Public Meeting. Councillor Grant introduced herself and explained who the members of Lifelong Learning Committee are and the role of the Committee.

**2. Format of meeting**

Councillor Grant explained the format the meeting would follow.

**3. The proposal**

Councillor Grant clarified the proposal is that education provision at Strone of Cally Primary School be discontinued with effect from Wednesday 27 June 2012, that pupils from Strone of Cally Primary School have their education provided at Kirkmichael Primary School from Tuesday 14 August 2012 and the delineated area of Kirkmichael Primary School be extended to subsume to whole catchment area of Strone of Cally Primary School from Tuesday 14 August 2012. Councillor Grant explained that there were two presentations to be given and then introduced the panel members.



#### 4. Presentations

##### Background

Alan Taylor gave a presentation on the background of the factors which were considered when reviewing the school estate, the declining school roll at Strone of Cally Primary School and the capacity and current and projected pupil rolls at Kirkmichael Primary School.

##### Statutory Consultation Process

Karen Robertson gave a presentation on the legal framework, the proposal paper, each stage of the statutory consultation process and the timescales for each of these stages.

A member of the public entered the meeting.

Councillor Grant then opened up the meeting to any questions or observations from the floor.

#### 5. Questions

- Q. A concern was raised that catchment areas are not working as parents are not sending their children to their catchment school as a result of parental choice.**
- A.** KR agreed and advised that the Council was aware of the number of children who lived in Strone of Cally catchment area but whose parents had chosen to send them to other schools. This is the parents' legal right to send their child to the school of their choice and Councils are required by law to grant these requests wherever possible. Councils may only refuse placing requests where there is a specific legal reason for doing so, and this decision is not taken lightly as parents have a statutory right of appeal to an Appeal Committee and the Sheriff Court if their request is refused by the Council.
- Q. Why children are being "ferried" to school, for example, by taxis?**
- A.** KR advised that Councils are required by law to provide free home to school transport for pupils who attend their catchment school and live more than the statutory walking distance from that school. In primary schools, that is 2 miles. In rural areas it is often the case that there is no public transport and taxis require to be used in some cases.
- Q. It was suggested that within 1 year Strone of Cally Primary School could have 4-5 children in the school.**
- A.** AT responded that the Council is aware of the families with children living in the catchment area and explained 7 catchment area children for Strone of Cally Primary School attend Kirkmichael Primary School and 3 catchment area children attend Rattray Primary School. This information is available within the reports provided. Kirkmichael Primary School is a sustainable school.

- Q. A concern was raised that the projected roll figures are wrong.**
- A.** AT responded explaining that it is assumed that if the eldest child attends a school by parental choice, then younger siblings will attend the same school. No parent has indicated that they would send their younger child to a different school from their older siblings. Therefore the projected roll figures are based on the choices that parents in Strone of Cally Primary School catchment area have already made for their children and younger siblings are projected to attend the same school as their elder siblings. AT made it clear that Perth and Kinross Council is not in the business of closing a school when there is a requirement for it to remain open. The population in the area is in decline. AT is happy to check the information which has been provided.
- Q. What are the transport costs for travelling from Bridge of Cally to Kirkmichael?**
- A.** Currently the home to school transport costs for travelling from Bridge of Cally to Kirkmichael is approximately £13,000 per year. Perth and Kinross Council transport costs are £6.2 million per year for transporting primary and secondary pupils.
- Q. If a child needs to attend the doctor or dentist, it is a 40 mile round trip from Kirkmichael Primary School compared to only a 12 mile trip from Strone of Cally Primary School.**
- A.** AT explained a child should only be taken out of school in an emergency and this should not be a regular occurrence.
- Q. How many children it would take to keep the school open?**
- A.** AT referred to his 'Background' presentation and the criteria used which looked at schools with less than 15 pupils. There is no definite figure as several criteria are considered.
- Q. Why is Bridge of Cally classed as "remote rural"?**
- A.** AT explained that there are less than 10,000 people within the population around Bridge of Cally within a 30 minute travelling distance. This criteria has been provided from the Scottish Government. There are only 8,000 people living within the settlement of Blairgowrie, Rattray and Carsie, therefore Perth is the nearest settlement with a population of more than 10,000 people, making both Strone of Cally and Kirkmichael classified as remote rural schools.

**Q. If new houses are built, and Kirkmichael school fills up, will Kirkmichael catchment children have to attend Newhill Primary School?**

**A.** AT explained the formula used to calculate the number of children projected to be generated from housing developments. Education and Children's Services has looked at the Main Issues Report and only small applications have been submitted which raised no significant issues. Councillor Grant is investigating new houses in Blairgowrie. The Community Campus has been built so it can be expanded if necessary. Developer contributions were explained.

**Q. Why was the Community Campus not built bigger?**

**A.** Occupancy levels of schools were explained. An example was explained for a catchment area of Perth Academy.

**Q. It was suggested that Newhill Primary School was too small before it was built.**

**A.** Schools are now built so they can be extended to provide flexibility. Developer contributions were discussed again explaining if the capacity reaches above 80%, housing developers must contribute to expand a school.

**Q. Does Perth and Kinross Council own the ground Strone of Cally Primary School is built on?**

**A.** The Service Manager – Resource Management is currently looking into this.

**Q. Who has the final decision to close the school?**

**A.** Lifelong Learning Committee will make this decision.

AT explained that the September 2010 census has also been looked at and there is no significant change to the pupil rolls since the start of the review process.

**Q. It was suggested that the school lunches do not travel very well.**

**A.** The Head Teacher of Kirkmichael Primary School advised that there have been no problems with the food provided and the number attending for school lunches has increased.

**Q. This was disputed by a member of the public and it was suggested that salmonella could be developed if the food is transported beyond Bridge of Cally to Kirkmichael Primary School.**

**A.** AT advised that many schools do not have school kitchens and school lunches are transported every day. However, AT will check with the Catering Manager regarding any issues with this.

**6. Close and Thanks**

Karen Robertson reiterated the deadline for making representations is Friday 25 March 2011. Any representations or further questions should be directed to the contact details provided, by 5.00pm on 25 March 2011.

Councillor Grant thanked everyone for attending and closed the meeting.



**Perth & Kinross Council**  
**Education and Children's Services**  
**Strone of Cally Primary School**  
**Summary of Consultation Responses**

The statutory consultation on the proposal regarding Strone of Cally Primary School commenced on 26 January 2011 and closed on 25 March 2011.

The proposal paper was issued to the list of consultees contained within the Proposal Paper. 220 copies of the Proposal Paper were issued. The Proposal Paper was also published on the Council website.

A specific email address was set up for representations and enquiries. This was in addition to the usual methods of submitting representations. There were no enquiries made requesting additional information. One written submission was received.

<b>RESPONDENT GROUP</b>	<b>NUMBER OF RESPONSES</b>
Parents of former pupil at Strone of Cally Primary School	1
<b>Total</b>	<b>1</b>

The Council held two public meetings to discuss the proposal. The first was in Kirkmichael Village Hall on Wednesday 23 February 2011. No parents or interested parties attended this meeting. The second was held in Bridge of Cally Village Hall on Monday 28 February 2011. Four members of the public attended this meeting.

The following points summarise the verbal issues raised at the meeting and in the written response to the Proposal Paper:

One individual was concerned that catchment areas are not working as parents are not sending their children to their catchment school as a result of parental choice.

The same individual suggested that within 1 year Strone of Cally Primary School could have 4-5 children in the school if parents sent their children to their catchment school.

The same individual was concerned that the Council's projected roll figures were wrong.

The same individual was concerned regarding the travel distance if a child needs to attend the doctor or dentist during the school day.

The same individual was concerned that if new houses are built, and schools fill up, that Kirkmichael catchment children would have to attend Newhill Primary School. Concern was raised why the Community Campus was not built bigger.

The same individual was concerned that the school lunches do not travel well.

The same individual was concerned regarding the accuracy of the Scottish Government classification of the school being “remote rural”.

Many of the points made in the written submission were also made at the public meeting as they were made by the same person.

## **Consultation proposal by Perth and Kinross Council**

### **Report by HM Inspectorate of Education addressing educational aspects of the proposal to close Strone of Cally Primary School and delineate the catchment area for Kirkmichael Primary School to include that of Strone of Cally Primary School.**

#### **Introduction**

1.1 Perth and Kinross Council proposes to close Strone of Cally Primary School at the end of the school session in June 2012 and to extend the catchment area of Kirkmichael Primary School to include that of Strone of Cally Primary School from the start of the school session in August 2012.

1.2 The report from HM Inspectorate of Education (HMIE) is required under the terms of the *Schools (Consultation) (Scotland) Act 2010*. It has been prepared by HMIE in accordance with the terms of the Act.

1.3 HM Inspectors undertook the following activities in considering the educational aspects of the proposal:

- attendance at the public meetings held on 23 February 2011 and 28 February 2011 in connection with the council's proposals;
- consideration of all relevant documentation provided by the council in relation to the proposal, specifically the educational benefits statement and related consultation documents, written and oral submissions from parents and others;
- consideration of further information on all schools affected; and
- visit to Kirkmichael Primary School, including discussion with relevant consultees.

1.4 HMIE considered:

- the likely effects of the proposal for children and young people of the school, for any other users, for children likely to become pupils within two years of the date of publication of the proposal paper, and for other children and young people in the council area;
- any other likely effects of the proposal;



- how the council intends to minimise or avoid any adverse effects that may arise from the proposal; and
- benefits which the council believes will result from implementation of the proposal, and the council's reasons for coming to these beliefs.

1.5 As the proposal will lead to the closure of a rural school as defined in the *Schools (Consultation) (Scotland) Act 2010*, HMIE also took account of the council's consideration of:

- viable alternatives to the closure of Strone of Cally Primary School;
- the likely effect on the local community with regard to sustainability and on the community's access to the buildings, grounds and facilities if the school were to close, and
- the likely effect of different travelling arrangements on the environment and on children and young people and other school users occasioned by the closure.

## **2. Consultation process**

2.1 Perth and Kinross Council undertook the initial consultation on its proposals with reference to the *Schools (Consultation) (Scotland) Act 2010*.

2.2 At the time of the consultation, education at Strone of Cally Primary School had been suspended (mothballed) since August 2010 and there were therefore no parents of children currently attending the school. However, a few parents who had chosen to place their children in Kirkmichael Primary School prior to the mothballing decision were positive about the proposed closure. They felt that their children had benefited socially from the larger numbers of children in Kirkmichael Primary School. They felt that their children had more friends and greater opportunities for social networking both in and out of school. Those parents also commented positively on the transport which had been provided as a result of the mothballing of Strone of Cally Primary School. This transport would continue if the proposal goes ahead and they felt that they would therefore continue to benefit from this provision.

2.3 Generally, parents in the Strone of Cally Primary School catchment area accepted the council's proposal but were disappointed that the area had insufficient school-age children to support the continuation of the school. One parent submitted a written response expressing concerns about the proposal to close the school. The council included the paper in the documentation received by HMIE and made a response to the parent.

2.4 The Parent Council of Kirkmichael Primary School were positive about the increased numbers which might result from the extension of the catchment area of the school. They expressed concern about the possibility

that the school roll could reach maximum capacity. Roll projections made by the authority to 2018 suggest that this is unlikely. The Parent Council Chair was also keen that Kirkmichael Primary School should benefit from any resources which would no longer be required by Strone of Cally Primary School.

Members of the wider community of Bridge of Cally were keen that the Strone of Cally school building should be disposed of sensitively.

### **3. Educational aspects of the proposal**

3.1 Education at Strone of Cally Primary School was suspended (mothballed) in August 2010 due to a decreasing school roll. In August 2010 only one pupil would have been in attendance. The highest projected roll for the school to session 2017/2018 is four pupils. Due to the low number of pupils a number of parents whose children might have attended the school have already chosen to make placing requests to other local primary schools. Seven of these requests were for Kirkmichael Primary School.

3.2 Kirkmichael Primary School is a two teacher non-denominational primary school with a nursery. Currently the school has 39 pupils, taught in two composite classes (P1-P4 and P5-P7). It is projected that if the proposal goes ahead the total number of pupils attending Kirkmichael Primary School by 2017/2018 will be 53, representing 73.6% of capacity. There is therefore sufficient capacity to accommodate the change in catchment area with limited impact on the capacity of the school.

3.3 Pupils from Strone of Cally Primary School and from Kirkmichael Primary School transfer to Blairgowrie High School, so there will be no impact for current or future pupils in relation to their secondary schooling. One of the factors of the proposal which has the potential to lead to educational benefits is the increased number of pupils transferring from the one school who will know one another when starting secondary school.

3.4 The council's papers refer to a large number of educational benefits arising from the proposal. Those of significance are:

- the increased opportunities for children to work in groups and collaborate in their learning with others of the same age, thereby offering the potential for the development of a range of important skills;
- the extensive outdoor area at Kirkmichael Primary School which provides opportunities for teachers to help children to develop their physical skills, health and wellbeing, and which facilitates learning about the environment;

- the co-location of the nursery and primary school which eases transition from nursery to school and allows primary and nursery children to benefit from both educational environments, thereby enhancing learning and teaching, and
- the range of curricular activities which Kirkmichael Primary School provides, including sports clubs, gardening, cookery, residential and day trips to support teaching and learning.

3.5 The council's proposals will enable efficiencies accruing from the closure to contribute to the overall benefit of children and young people across the authority.

3.6 As the proposal will lead to the closure of a rural school as defined in the *Schools (Consultation) (Scotland) Act 2010*, HMIE also took account of the council's consideration of:

- viable alternatives;
- impact on the local community; and
- effect of different travelling arrangements on the environment and on children and young people and other school users occasioned by the closure.

3.7 The council considered five alternative options to the closure of Strone of Cally Primary School. After extensive research in relation to future rolls, distances travelled, new housing, impact of bad weather on attendance, and costs, the most viable option was considered to be the closure of Strone of Cally Primary School and the widening of the catchment area for Kirkmichael Primary School.

3.8 There will be limited impact on the wider community of Strone of Cally Primary School. Currently, community activities are held in the Community Hall. Only events related to school pupils were held in the school building. The wider community of Kirkmichael Primary School will not be affected by the proposal.

3.9 The impact of additional travel for children, staff and parents was considered by the council. It is projected that in the future three pupils may be required to travel an additional 7.3 miles. However, these pupils would be transported by the current bus and would therefore have minimum impact on cost and the environment. Two members of staff are required to travel an additional 7.3 miles.

#### **4. Summary**

4.1 The proposal from Perth and Kinross Council to close Strone of Cally Primary School and re-delineate the catchment area of Kirkmichael Primary School to include the catchment area of Strone of Cally Primary School with effect from August 2012, offers potential educational benefits to children who would have attended Strone of Cally Primary School and to the wider community of Perth and Kinross. These benefits relate to the social and personal development of the children from Strone of Cally, moving to a school which can provide a suitable range of curriculum opportunities and activities. The children of Kirkmichael Primary School may also benefit from the proposal, for example through enhanced opportunities to build friendships and to extend their social skills. As there are no children currently attending Strone of Cally Primary School, there will be no immediate impact of the proposal and limited impact in the next six years. The council's proposal has the support of almost all parents and of members of the local community.

4.2 In taking forward the proposal, the council has given consideration to other alternative options, to the possible impact on the wider community and to any environmental consequences. There are no significant issues in relation to any of the above. The council has taken full account of the remote rural nature of the schools concerned in the proposal.

**HM Inspectorate of Education  
April 2011**



**PERTH AND KINROSS COUNCIL**

**EDUCATION AND CHILDREN'S SERVICES**

**OPTIONS APPRAISAL REPORT**

**STRONE OF CALLY PRIMARY SCHOOL**

**17 December 2010**

## **1. Background**

Perth and Kinross Council works to enhance quality of life, make best use of public resources and ensure continuously improving services. Perth and Kinross Council's corporate strategy "Securing the Future" aims to ensure that individuals, families and communities experience the best possible outcomes from a range of services. Perth and Kinross Council has a strong identity and clear priorities which everyone works together to achieve, creating areas which are vibrant and successful; safe, secure, healthy and sustainable environments; educated, responsible and informed citizens; confident and active communities; and places where people are nurtured and supported.

This approach reflects the Single Outcome Agreement National Outcome 15 that "Our public services are high quality, continually improving, efficient and responsive to local people's needs", and the Local Outcome that "Our services will be responsive, of high quality and continually improving". This report also links with the School Estate Management Plan, approved by the Lifelong Learning Committee in November 2007, Education and Children's Services Policy Framework Maximising Resources and with the Education and Children's Services objective to develop the range and quality learning experiences for all.

Councils, as an Education Authority, have a statutory duty in terms of the Education (Scotland) Act 1980 to make adequate and efficient provision of school education across their entire area for the current school population and future pattern of demand. The Council's School Estate Management Plan provides information on the whole of the school estate and provides information about overall objectives and future priorities within Perth and Kinross Council.

Councils also have a statutory responsibility in terms of the Local Government in Scotland Act 2003 to achieve best value. In doing so, consideration must be given to occupancy as buildings are expensive resources. To achieve best value and optimum efficiency, the minimum number of buildings is required to deliver Council services to a particular locality. The organisation of the school estate is therefore kept under regular review, including the need for school provision and other factors, such as altering catchment areas and the implementation of shared headships.

## **2. Context**

### **2.1 Blairgowrie and the Glens**

Strone of Cally Primary School is in the Blairgowrie and the Glens ward of Perth and Kinross Council and Government statistics are available at this level (Appendix 1 of Appendix A).

## 2.2 Population

'The estimated population of Scotland on 30 June 2009 was 5,194,000. The population of Scotland grew by around 25,500 in the 12 months between 1 July 2008 [5,168,500] and 30 June 2009, an increase of 0.5%.<sup>1</sup> The estimated population of Perth and Kinross grew by 1.2% between 2008 (144,180<sup>2</sup>) and 2009 (145,910<sup>3</sup>). The population for the Blairgowrie and the Glens ward was estimated at 10,689<sup>4</sup> in 2009, an increase of 0.2% since the 2008 mid year estimate (10,668<sup>5</sup>).

**Table 1: 2009 Mid Year Population Estimates by Age<sup>6</sup>**

	Children		Working Age		Pensionable Age	
	No	%	No	%	No	%
<b>Blairgowrie and the Glens</b>	1,575	14.73	6,011	56.24	3,103	29.03
<b>Perth and Kinross</b>	24,889	17.06	87,274	59.81	33,747	23.13
<b>Scotland</b>	912,340	17.57	3,248,815	62.55	1,032,845	19.89

Table 1 shows that, based on the estimated population, within Blairgowrie and the Glens there is a lower proportion of children<sup>7</sup> and a higher proportion of people of pensionable<sup>8</sup> age in comparison to both Perth and Kinross and Scotland. It also shows that, within Blairgowrie and the Glens, the estimated population of people of a pensionable age is almost double that of children in the ward.

<sup>1</sup> Source: [Scotland's Population 2009: The Registrar General's Annual Review of Demographic Trends 155th Edition, GROS](#) Figures in brackets – source: Mid Year Population Estimates, 2008, GROS from [Scottish Neighbourhood Statistics](#)

<sup>2</sup> Mid Year Population Estimate 2008, GROS from [Scottish Neighbourhood Statistics](#)

<sup>3</sup> Mid Year Population Estimate 2009, GROS from [Scottish Neighbourhood Statistics](#)

<sup>4</sup> Mid Year Population Estimate 2009, GROS from [Scottish Neighbourhood Statistics](#)

<sup>5</sup> Mid Year Population Estimate 2008, GROS from [Scottish Neighbourhood Statistics](#)

<sup>6</sup> Mid Year Population Estimate 2009, GROS from [Scottish Neighbourhood Statistics](#)

<sup>7</sup> GROS definition Aged 0 - 15

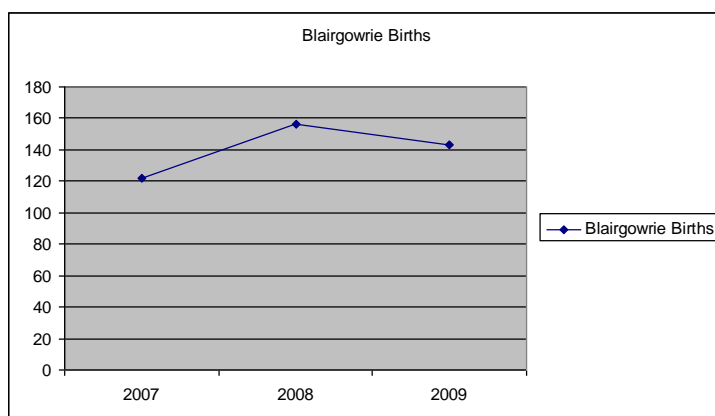
<sup>8</sup> GROS definition – males aged 65 and over, females aged 60 and over

Births in the registration district of Blairgowrie between 2007 and 2009 are given below. These figures indicate the number of births registered in the area and not necessarily births of people resident in the area.

### Births Registered within Blairgowrie Registration District

	2007	2008	2009
<b>Blairgowrie</b>	122	156	142

Source: Perth and Kinross Council Registrars



Other ward level statistics are attached as Appendix 1 and reveal that:

- levels of both income and employment deprivation within Blairgowrie and the Glens are higher than average for Perth and Kinross; and
- Blairgowrie and the Glens has deprived areas, as defined by the Scottish Index of Multiple Deprivation, with Rattray being within the 15% most deprived areas of Scotland.

### 3. Initial appraisal and current situation

Detailed analysis is undertaken on an annual basis for each academic year to ensure the capacity of primary schools meets the demands arising from P1 pupils. These meetings take place between January and March with Headteachers, Education Service Managers and Support Services staff to review and agree the class structures within primary schools once the likely number of pupils attending is known. Any potential building works required to accommodate the pupil numbers are identified at this time.

In addition, in 2010 all the primary schools within each secondary school catchment area were examined.



All primary schools which had less than 15 pupils and a current occupancy level of below 40% were considered both in detail and in relation to the other schools within the secondary catchment area. The primary schools' projected rolls and the potential numbers of primary pupils that may result from planning applications received were taken into account to provide some indication of the likely future pattern of demand within the primary school catchment areas.

The impact of new housing in the Strone of Cally Primary School catchment area was examined by looking at planning applications lodged with Perth and Kinross Council. As at 14 October 2010, there were 6 approved applications for a total of 8 houses. Applying the formula used within Perth and Kinross of 0.27 of a primary pupil being generated from one house, this would generate a requirement of 2.16 places, rounded up to 3 potential primary pupil places. This formula is the average number of primary pupils generated from new house building across the whole of Perth and Kinross.

As a result of this initial consideration of the school estate, Strone of Cally Primary School was identified as a primary school which met the criteria of less than 15 pupils and below 40% occupancy. The undernoted table provides the information (updated as at 18/11/10) used within the initial assessment:

### **Strone of Cally Primary School**

School capacity	50 pupils
Pupil roll (September 2009 census)	2 pupils
Current pupil roll (September 2010 census)	0 pupils
School occupancy level (September 2009)	4%
Current school occupancy level	0%
Highest projected school roll (to 2017/2018)	1 pupil
Projected occupancy using highest projected roll	2%
Potential roll including planning applications	4 pupils
Potential occupancy including planning applications	8%
Distance to neighbouring school (Kirkmichael PS)	7.3 miles

### **Kirkmichael Primary School**

School capacity	72 pupils
Pupil roll (September 2009 census)	37 pupils
Current pupil roll (September 2010 census)	39 pupils
Current school occupancy level	54.2%
Highest projected school roll (to 2017/2018)	40 pupils
Projected occupancy using highest projected roll	55.5%
Potential roll including planning applications	50 pupils
Potential occupancy including planning applications	69.4 %
Distance to neighbouring school (Strone of Cally PS)	7.3 miles

## **Ratray Primary School**

School capacity	371 pupils
Pupil roll (September 2009 census)	236 pupils
Current pupil roll (September 2010 census)	225 pupils
Current School Occupancy Level	60.7%
Highest projected school roll (to 2017/2018)	214 pupils
Projected occupancy using highest projected roll	57.7%
Potential roll including planning applications	272 pupils
Potential occupancy including planning applications	73.3 %
Distance to neighbouring school (Strone of Cally PS)	6.1 miles

The projected school roll is calculated using a recommended Scottish Government formula. This takes the known number of pupils within the school and adds in an average for the numbers of pupils expected over the next seven years based on previous pupil numbers, adjusted to take account of any specific circumstances. The calculation is based on the average of the previous 5 years' Primary 1 intake numbers. The highest potential roll takes the projected school roll and adds the number of pupils reasonably expected to materialise from proposed housing developments in the catchment area. The occupancy level of a school is calculated using the current pupil numbers divided by the school pupil capacity expressed as a percentage.

The distance to the nearest school was calculated using IntraMap, a Geographic Information System (GIS) used within Perth and Kinross Council under licence from Ordnance Survey. The distance measured is the actual school to school distance for this purpose.

The Strone of Cally Primary School pupil roll at September 2009 Census was 2 and at September 2010 Census was zero as the school has been mothballed.

As the pupil roll at Strone of Cally Primary School was to fall to a single pupil at the start of academic session 2010/2011, the decision was taken by the Executive Director (Education and Children's Services), in consultation with the Convener of the Lifelong Learning Committee, that Strone of Cally Primary School would be mothballed from August 2010. This is a term which means provision in a school is suspended with pupils zoned to another catchment area. Mutually agreed arrangements were made with the parents of the remaining pupil for session 2010/11.

At June 2010, seven pupils lived within the Strone of Cally Primary School catchment area but, as a result of successful placing requests made by the parents, attended Kirkmichael Primary School. They were advised of the arrangements to be implemented from August 2010.

All Perth and Kinross Primary schools have capacities which are adjusted from time to time to reflect any building works or alterations which have taken place within the school. The approved capacity of Strone of Cally Primary School is 50 pupils.

The projected pupil roll for Strone of Cally Primary School up to 2017/2018 is attached as Appendix 2.

#### **4. Bridge of Cally and the local area**

Bridge of Cally is located in the foothills of Glenshee approximately 6 miles from Blairgowrie and lies on the highland fault line. The village is a small rural settlement sitting amidst beautiful scenery, farming and Dalmunzie Estate land. The area is sparsely populated and classified as remote rural.

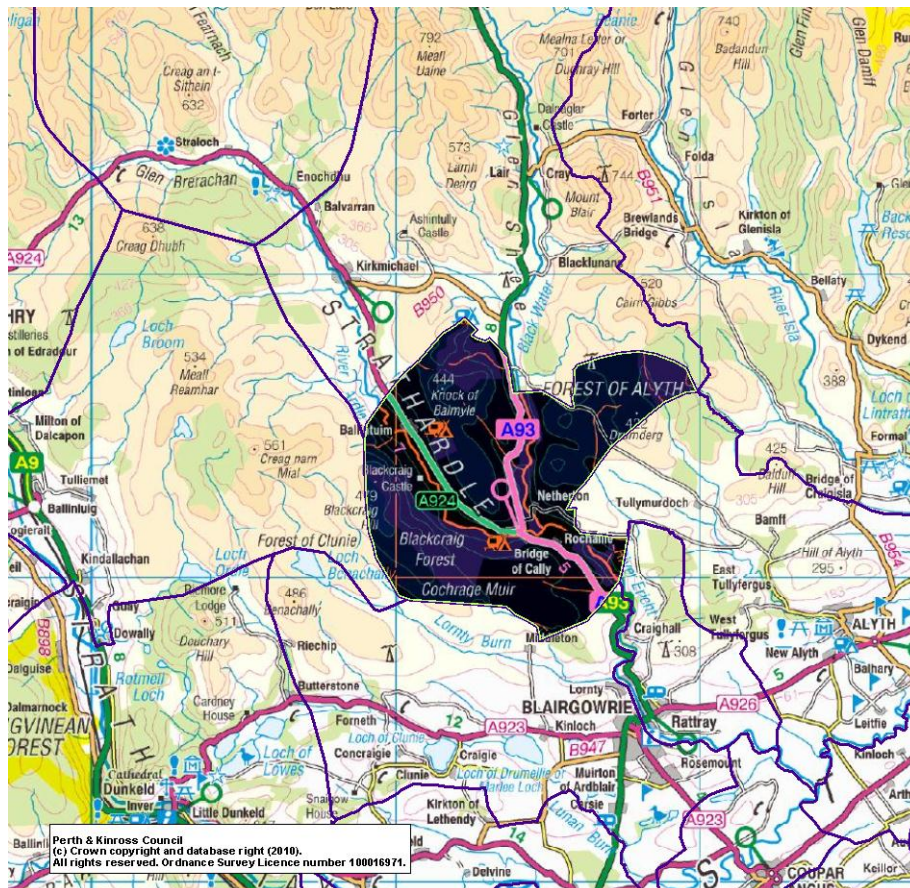
There are hotels and various holiday cottages and bed and breakfasts which accommodate visitors to this picturesque area and the winter sporting facilities at nearby Glenshee. The attractions accessible from the area include fishing, mountain biking, walking, golfing (Blairgowrie and Alyth) and pony trekking (Glenmarkie), with the Catheran Trail running through Bridge of Cally.

Bridge of Cally has a well used village hall which caters for a wide range of community events such as regular keep fit and carpet bowls sessions as well as table top sales and quiz nights. The school has not been used outwith normal school hours for any non-related school activities. The local village shop and post office won the Scottish Countryside Alliance's "Best Village Shop and Post Office Award" in 2009.

In terms of potential new business ventures in the area, enquires for advice and support to Perth and Kinross Council and Business Gateway have been checked and there have been no enquires received over the past few years by either.

#### **5. Strone of Cally Primary School**

Strone of Cally Primary School is a single teacher school serving the village of Bridge of Cally and the local area. The catchment area for the school covers an area of 66.506 square kilometres (25.678 square miles) and is detailed on the map overleaf.



Strone of Cally Primary School is classed as a “remote rural” school under Section 14 of the Schools (Consultation) (Scotland) Act 2010. The classification of rural and remote rural is based on two main criteria, settlement size and accessibility based on drive time. For Strone of Cally Primary School the classification criteria is “settlements of fewer than 3,000 people and with a drive time of between 30 and 60 minutes to a settlement of 10,000 or more”.

When Strone of Cally Primary School was last operational in June 2010, 2 pupils attended the school and 7 pupils within the Strone of Cally Primary School catchment area attended Kirkmichael Primary School as a result of placing requests. In addition, 3 pupils within the Strone of Cally Primary School catchment area attended Rattray Primary School as a result of placing requests. Of the pupils who were attending Strone of Cally Primary School, none were entitled to home to school transport as they lived within 2 miles of the school.

Strone of Cally Primary School main building comprises a ‘T’ shaped ‘Elliot’ type single storey building, with a shallow pitched roof, single glazed metal windows, timber external doors, UPVC gutters and downpipes. The walls are painted timber externally, with horizontal boarding at low level covering the foundations. There are studwork partitions internally throughout. The heating is electric.

In terms of asset management, the main building at Strone of Cally Primary School has been classed by Perth and Kinross Council Property Services as needing replacement within the medium term. Medium term life expectancy in this context means being deemed to come to the end of its economically useful life within the next 10 years.

Also on the school site are a disused store, shelter shed, timber shed and dining block. The school grounds are a mix of hard and soft landscaping. The gardens are well maintained with planters and flower and vegetable beds.

There is also a memorial garden at Strone of Cally Primary School called Abby's Garden. Abby was the secretary at Strone of Cally Primary School for a number of years and died very suddenly. Fundraising events subsequently took place to form Abby's Garden. A pergola was built and 2 picnic tables purchased, as well as tubs for flowers and planting. After the decision was made to mothball Strone of Cally Primary School, it was agreed by the PTA that Abby's family would be given the pergola and 1 of the picnic tables. The other picnic table will go to the village hall along with the plants and planters if the school is to close.

Within the existing Strone of Cally Primary School, the following facilities and accommodation are offered:

- 2 classrooms for primary education
- toileting facilities
- staffroom
- library
- office accommodation
- dining accommodation

Site plans of Strone of Cally Primary School are attached in Appendix 3.

Throughout Scotland, core facts are gathered and published on school buildings. The definition and assessment categorisations are set by the Scottish Government as follows:

Condition <sup>(1)</sup> - is an assessment of the physical condition of the school and its grounds. Categorisation is as follows:

- A: Good – Performing well and operating efficiently
- B: - Satisfactory – Performing adequately but showing minor deterioration
- C: Poor – Showing major defect and/or not operating adequately
- D: Bad – Life expired and/or serious risk of imminent failure

Suitability <sup>(2)</sup> - is an assessment of the school as a whole, its buildings and its grounds and of the impact these have on learning and teaching, leisure and social activities and the health and well-being of all users. Categorisation is as follows:

- A: Good – Performing well and operating efficiently
- B: Satisfactory – Performing well but with minor problems
- C: Poor – Showing major problems and/or not operating optimally
- D: Poor – Does not support the delivery of services to children and communities

Sufficiency<sup>(1)</sup> -states the occupancy – pupil roll divided by capacity expressed as a percentage.

Source: (1) *Core Facts Building Our Future: Scotland's School Estate 2003*  
(2) *The Suitability Core Fact: Scotland's School Estate 2008*

The condition surveys are undertaken on a three year rolling programme by a Perth and Kinross Council building surveyor team led by a chartered building surveyor. The suitability assessment is undertaken by the Headteacher and validated by senior managers within Education and Children's Services. These assessments were undertaken annually until 2010, but it has now been agreed that these will be undertaken every three years unless significant building or operational change has occurred within the school.

The core facts for Strone of Cally Primary School categorise both the building's condition and suitability as B (Satisfactory). The sufficiency (occupancy) of the school at the September 2010 school census is 0% as the school is mothballed.

Expenditure/investment within the buildings at Strone of Cally Primary School over the past three financial years is given below:

	2007/08	2008/09	2009/10
£'s	4,250	32,300	7,860

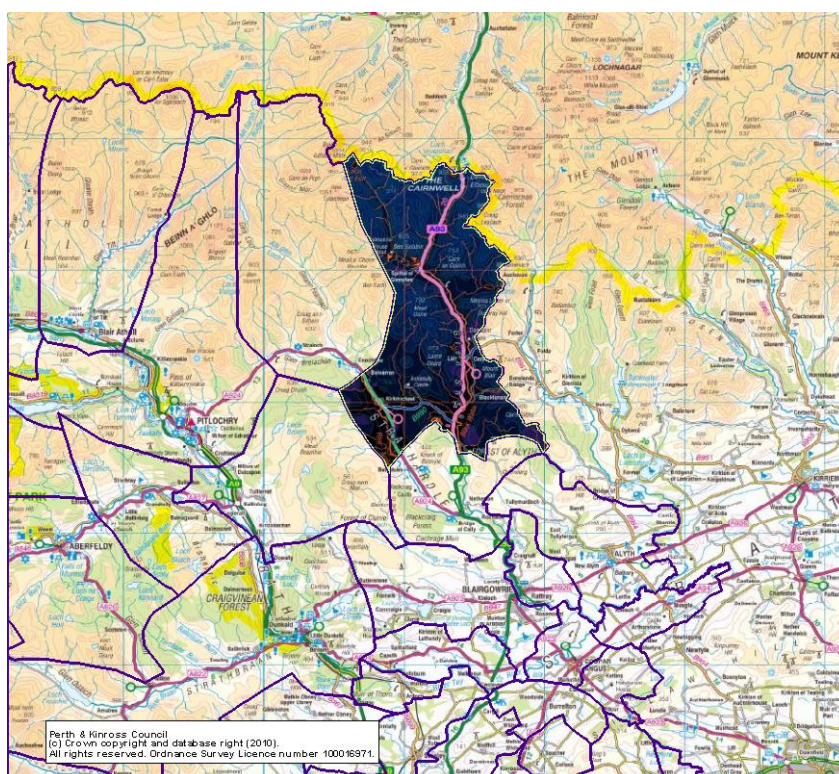
These figures reflect minor repairs, servicing and maintenance costs at Strone of Cally Primary School. The larger figure in 2008/09 was incurred to replace the fire alarm and emergency lighting at the school.

Planned works identified for future years and subject to budget availability, include replacing the heating system, replacing windows and external painter work.



## 6. Kirkmichael Primary School

Kirkmichael Primary School is a 2 teacher school serving the village of Kirkmichael and the local area. The catchment area for the school covers an area of 109.186 square kilometres (73.431 square miles) and is highlighted on the map below:



Kirkmichael Primary School is classed as a “remote rural” school under Section 14 of the Schools (Consultation) (Scotland) Act 2010. The classification of rural and remote rural is based on two main criteria, settlement size and accessibility based on drive time. For Kirkmichael Primary School the classification criteria is “*settlements of fewer than 3,000 people and with a drive time of between 30 and 60 minutes to a settlement of 10,000 or more*”.

Currently, 39 pupils attend Kirkmichael Primary School. The main school building is a pre-1919 two storey stone building under a pitched slate roof with cast iron gutters and downpipes. The building sits below road level and the site overlooks the river. There is a large outdoor area with a mix of hard and soft landscaping and a multi use games area. The heating is electric. Also on the school site are 4 timber storage sheds.

The following facilities and accommodation are offered:

- 3 classrooms for primary education
- nursery
- toileting facilities
- staff/resources room
- dining accommodation/ general purpose room
- Headteacher's room
- Small reception office
- Storage

Site plans of Kirkmichael Primary School are attached in Appendix 4.

The core facts for the school categorise both the building's condition and suitability as B (Satisfactory). The sufficiency (occupancy) based on the 2010 school census is 54.2%.

Expenditure/investment within the school buildings at Kirkmichael Primary School over the past three financial years is given below:

	2007/08	2008/09	2009/2010
£'s	241,317	11,112	13,533

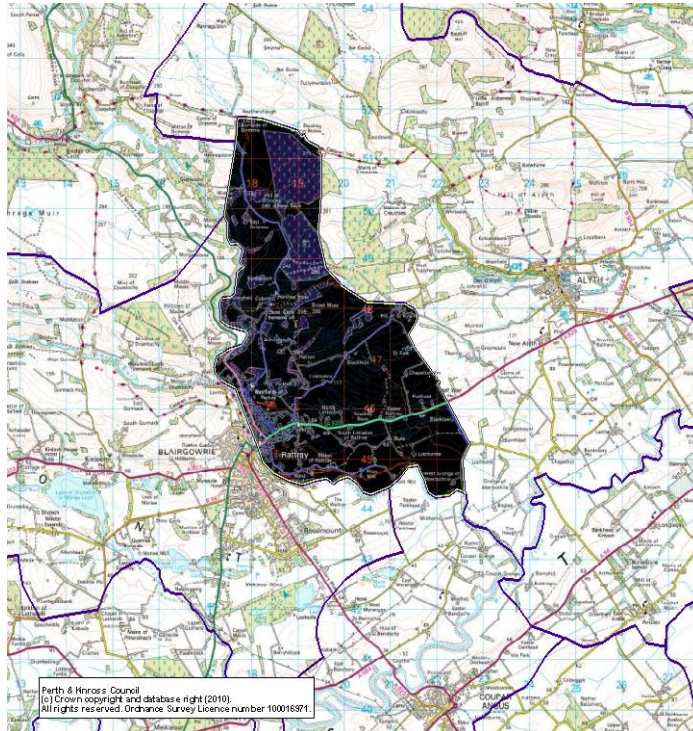
These figures reflect minor repairs, servicing and maintenance costs at Kirkmichael Primary School. The larger figure in 2007/08 reflects the investment of a two room extension at Kirkmichael Primary School. This was the result of a recommendation from HMle for improving the accommodation at Kirkmichael Primary School which was detailed in their report of November 2001. This accommodation houses a nursery class and a classroom.

The impact of new housing in the Kirkmichael Primary School catchment area was examined by looking at planning applications lodged with Perth and Kinross Council. As at 14 October 2010, there were 20 approved applications for a total of 25 houses. Applying the formula used within Perth and Kinross of 0.27 of a primary pupil being generated from one house, this would generate a requirement of 6.75 primary pupil places. There are three pending applications which would generate 2.43 primary pupil places which together, when rounded up, would result in 10 potential primary pupil places in total. This would give a potential occupancy at Kirkmichael Primary School of 69.4%.



## 7. Rattray Primary School

Rattray Primary School is an 18 teacher school serving Rattray and the local area. The catchment for the school covers an area of 66.506 square kilometres (25.678 square miles) and is detailed on the map below:



Rattray Primary School is not classified as a rural school under Section 14 of the Schools (Consultation) (Scotland) Act 2010.

Rattray Primary School is generally a single storey building with 7 classrooms and has 5 classrooms at first floor level below both flat and pitched roofs. The original school was built pre 1919 with extensions added in the 1960's and 1990's. The external walls are constructed in a mixture of materials from sandstone within the pre 1919's area to the brick/render of the 1960's extension and the fair faced concrete block work of the 1990's extension. The two pitched roof areas are covered with natural slate and the flat roofs are covered with a single ply membrane. Heating is provided from two oil fired boilers.

Within Rattray Primary School, the following facilities and accommodation are offered:

- 12 classrooms for primary education
- toileting facilities
- staffroom
- general purpose rooms
- library

- office accommodation
- additional support needs room
- nursery
- dining accommodation
- kitchen
- gym
- nurture room

Site plans of Rattray Primary School are attached in Appendix 5.

The capacity of the school is approved at 371 and the school roll at the September 2010 census is 225.

The core facts for Rattray Primary School categorise both the building's condition and suitability as B (Satisfactory). The sufficiency (occupancy) of the school at September 2010 school census is 60.7%.

At 14 October 2010, there were 23 approved applications for 199 houses. Applying the formula used within Perth and Kinross of 0.27 of a primary pupil being generated from one house this would generate a requirement of 53.73 primary pupil places rounded up to 54. There are 3 pending planning applications for a total of 13 houses that would generate 3.51 primary pupil places, rounded up to 4. Together this would give a requirement for an additional 58 primary pupil places. This would give a potential occupancy at Rattray Primary School of 73.3%.

Perth and Kinross Local Development Plan Main Issues Report is consulting on the proposal to allocate land for either 650 or 700 houses in Blairgowrie and Rattray.

Expenditure/investment within the buildings at Rattray Primary School over the past three financial years is given below:

	2007/08	2008/09	2009/10
£'s	32,256	41,563	51,052

These figures reflect minor repairs, servicing and maintenance costs at Rattray Primary School. In these three years, the larger elements of this expenditure was on the resurfacing of roofs.

Planned works identified for future years, and subject to budget availability, include replacing the boilers, resurfacing the playground, upgrading the toilets and cleaners' stores and sand and seal the hall floor. Within the capital programme, an extension to Rattray Primary School is planned and, although not fully funded, has £371,000 in financial years 2014/15 under the heading of "Rattray Community Facilities".

This extension is planned to provide community facilities comprising a two court hall, group rooms, integrated team base, meeting room and various supporting spaces (subject to capital funding being made available).

## **8. Options**

The options considered as a result of the appraisal exercise were:

- a) i) keep Strone of Cally Primary School open with its existing catchment area  
ii) keep Strone of Cally Primary School open and redelineate the catchment area to extend the catchment area
- b) continued mothballing of Strone of Cally Primary School, subject to regular review
- c) close Strone of Cally Primary School and transfer the pupils to Kirkmichael Primary School and redelineate the catchment area
- d) close Kirkmichael Primary School and transfer the pupils to Strone of Cally Primary School and redelineate the catchment area
- e) close Strone of Cally Primary School and transfer the pupils to Rattray Primary School and redelineate the catchment area

The provision of primary education within Strone of Cally needs to be considered in the context of the needs of the pupils and the local community, both now and in the future.

The following points were all considered when arriving at the decision to propose a statutory consultation exercise be undertaken on the potential closure of Strone of Cally Primary School. The declining pupil roll at Strone of Cally Primary School over the past ten years is not expected to rise in any significant way based on the general population trends in Blairgowrie and the Glens ward, even when allowing for the potential numbers of pupils arising from housing developments in the area, in addition to the projected pupil numbers.

Future plans for potential land use in Perth and Kinross appear in the Main Issues Reports (MIR) for the TAYplan and Perth and Kinross Local Development Plan (LDP). The TAYplan estimates that to meet the population projections, between 910 - 990 additional houses will be constructed per year across Perth and Kinross.

Within the Strathmore and Glens area of the MIR of the LDP (this used to be called Eastern area in the current LDP. The new draft LDP will cover the whole of Perth and Kinross now but the Blairgowrie/Eastern area is now referred to as Strathmore and the Glens), this would equate to approx 75 - 85 houses per year (at the high end development which is the upper estimate for the number of houses that could be built each year). The new draft LDP will cover the whole of Perth and Kinross now but the Blairgowrie/Eastern area is now referred to as Strathmore and the Glens.

The TAYplan sets out a hierarchical approach to directing new development to existing settlements and identifies Blairgowrie and Rattray as proposed second tier settlements which would take the largest proportion of any new development. The remainder of any development being split between the third tier settlements of Alyth and Coupar Angus.

In line with the TAYplan MIR, little development is likely to be identified outwith these settlements in the LDP and any development is likely to be of small scale (less than 5 houses).

Strone of Cally Primary School has a declining pupil roll with no foreseeable significant increase in pupil numbers arising from any developments in the area. The highest projected pupil roll between 2010 and 2012 is anticipated to be four pupils, falling to three pupils between 2012 and 2017.

Within the Strone of Cally Primary School catchment area, parents of 7 pupils already send their children to the nearby rural primary school at Kirkmichael. The majority of parents, with school age primary pupils attending Perth and Kinross schools, within the Strone of Cally Primary School catchment already prefer to send pupils to the nearest rural school rather than the nearest school in Rattray. The travel distance from Strone of Cally to Kirkmichael Primary School allows the journey to and from school to be undertaken within an acceptable time.

Kirkmichael Primary School has the capacity to accommodate the forecasted pupil numbers from Strone of Cally Primary School which would then represent an occupancy rate of 73.6%. There are opportunity costs associated with maintaining and running an underused asset such as Strone of Cally Primary School. From an asset management perspective, it becomes more efficient to rationalise into one resource with improved sufficiency levels.

Therefore, this options appraisal recommends that primary education services at Strone of Cally Primary School be ceased and the service be provided at Kirkmichael Primary School. This will require the catchment area of Kirkmichael Primary School to be redelineated and transport to and from school to be provided to primary children living more than 2 miles from Kirkmichael Primary School.

The table below shows the potential future pupil numbers at both Strone of Cally Primary School and Kirkmichael Primary School:

	Pupils	Potential Pupils <sup>1</sup>	Total
Strone of Cally Primary School	1	3	4
Kirkmichael Primary School	39	10	49
Total	40	13	53

<sup>1</sup> *Potential pupils generated from known planning applications*

The possible potential primary pupils that could require primary education within the Strone of Cally and Kirkmichael Primary Schools combined catchment area is 53 pupils. This exceeds the capacity of Strone of Cally Primary School and would represent occupancy of 73.6% at Kirkmichael Primary School.

The size of the catchment area for Strone of Cally Primary School is smaller than Kirkmichael Primary School catchment area. However, it is over a less mountainous topography. The size of the catchment area for Strone of Cally Primary School is not unusual for a rural school in Perth and Kinross.

Seven of the Strone of Cally Primary School catchment pupils already attend Kirkmichael Primary School as a result of successful placing requests and 3 already attend Rattray Primary School. It is possible that parents of pupils who currently attend rural primary schools may find it more acceptable for their children to continue to be educated in a rural school.

A travel distance of 7 miles is not an unreasonable distance to expect children to travel for primary school education in rural areas. Some pupils who attend Kirkmichael Primary School as a result of successful placing requests already travel further than this distance. Other catchment areas in Perth & Kinross also have such a travel distance within them. However, it is recognised that adverse weather in the winter currently impacts on travel arrangements in this area. In session 2009/2010, Kirkmichael Primary School was completely closed due to severe weather for 1 day. In addition, there were 6 days where children on school transport were unable to attend due to severe weather. To date, there have been 5 school closure days in session 2010/11 due to severe weather affecting the whole of Perth and Kinross where the school was completely closed.

If Strone of Cally Primary School was left mothballed on an indefinite basis, Perth and Kinross Council would incur annual costs to maintain the building. Unoccupied buildings can deteriorate more rapidly than operational premises and can become a focus for vandals whether the premises are located in urban or rural areas. Repair works to rectify possible issues have not been included in the costings within this report.

The main building has been classed as requiring replacement on a medium term basis and this would incur additional capital expenditure, depending upon the scale of replacement accommodation predicted to be required.

## **9. Resource Implications**

Financial savings generated from closing Strone of Cally Primary School amount to £86,342 on an annual basis. This saving is predominantly made up of staff costs and building running costs. The detailed savings are shown in Appendix 6.

On 30 June 2010, the Council approved the report Securing the Future – Towards 2015 and Beyond (Report 10/357 refers). This report set out our continuing strategy for securing the future, aiming to support the delivery of savings through revised service delivery models and ongoing improvement activities in the Council. Education and Children’s Services Service Review Programme within this report contains a re-design project to “review the school estate”.

On 25 August 2010, the Lifelong Learning Committee approved the report Review of School Estate – Strone of Cally Primary School (Report 10/425 refers). This report sought approval to proceed with undertaking an Options Appraisal and, if appropriate, produce a Proposal Paper containing an Educational Benefits Statement in respect of Strone of Cally Primary School

Therefore, any savings arising from the proposed option to close Strone of Cally Primary School will be allocated against Education and Children’s Services budget savings targets which have currently been set for the period 2011-2014.

This will mitigate against making alternative budget reductions within other areas of Education and Children’s Services, with a corresponding reduction in service delivery in that area.

The annual budget is built reflecting cost drivers such as the number of schools, buildings, staff and pupils. If Strone of Cally Primary School were to be closed then future years’ budgets would not contain any allowance for staffing Strone of Cally Primary School and there would be reduced property costs (and possibly no costs should the building be sold in the future). Any per capita budgets relating to individual pupils would continue to be budgeted against the school that these pupils would attend following the closure of Strone of Cally Primary School.

## **10. Environmental Impact**

The main environmental impact of the options are as follows:

- If Strone of Cally Primary School was to remain open there would be the continuing impact from needing to power, heat and light the building to provide primary education services.
- If Strone of Cally Primary School was to close and the pupils transfer to Kirkmichael Primary School there would be an environmental impact from the transporting of approximately 3 pupils. However, this would be offset by the requirement to no longer run Strone of Cally Primary School. At Kirkmichael Primary School, the 3 additional pupils could be accommodated without any significant additional impact.
- If Strone of Cally Primary School was to close and the pupils transfer to Rattray Primary School, there would be an environmental impact arising from the transporting of approximately 3 pupils. This would be offset by the requirement to no longer run the Strone of Cally Primary School.
- If Kirkmichael Primary School was to close and the pupils transfer to Strone of Cally Primary School, there would be the environmental impact of transporting 39 pupils on a daily basis to Strone of Cally Primary School. However, this would be reduced by the closure of a larger school building.

## **11. Impact on the Community**

The impact on the vibrancy of the community is unlikely to be affected significantly as all of the community events are held within the local village hall. The hall website reveals regular events are held, and it is anticipated that they would continue to be held if Strone of Cally Primary School was to close.

Community capacity workers could assist in developing alternatives if there were particular occasions during the academic year when school pupils and community members come together.

## **12. Conclusion**

In summary, it is proposed that a statutory consultation exercise takes place on a proposal to close Strone of Cally Primary School and transfer the pupils to Kirkmichael Primary School and redelineate the catchment area of Strone of Cally Primary School to Kirkmichael Primary School. Currently, only a small number of Strone of Cally parents wish to have their child attend the local school. The majority of local parents have already demonstrated their desire to have their children educated within a neighbouring catchment school through successful placing requests.

Future pupil projections have been considered and Kirkmichael Primary School can accommodate all projected and potential pupils from the combined catchment areas. A higher occupancy level maximises use of the school estate and represents good asset management.

Travel distance to the neighbouring school is not excessive and pupils attending Kirkmichael Primary School already make this journey. However, it is recognised that adverse weather in the winter currently impacts on travel arrangements in this area.

Environmental impacts have been summarised and detailed work will be done as part of the environmental assessment for this proposal.

The local community is served by a well used hall which acts as a focal point for community events and closure of the school would have no impact on this. Community capacity building can assist to maintain community contacts.



## Ward Profile Information

### Blairgowrie and the Glens (Ward 3)

#### Population

Last updated | 07/10/2010

#### Population Profile

<b>Population Estimates 2009</b>	<b>Ward 3</b>	<b>PKC</b>	<b>Scotland</b>
Total population	10,689	145,910	5,194,000
Population aged 16-19	504	6,887	264,187
% children	14.7%	17.0%	17.6%
% pensionable age	29.0%	23.1%	19.9%
% working age	56.2%	59.8%	62.6%
Male working age	3,122	46,288	1,679,890
Female working age	2,889	40,986	1,568,925

*Source: GROS 2009 Small area population estimates, 2010 Population available Sep 2011*

Population information is also available from the 2001 Census for Ward 3 and can be accessed from the [Blairgowrie and Glens Census Profile](#).

The Blairgowrie and the Glens ward has a lower percentage of children and working age population than the Perth and Kinross average and it has a higher percentage of pensionable age population. The town of Blairgowrie is the population centre accounting for around 80% of the population of the ward.

#### Economy

Last updated | 10/11/2010

#### Economic Profile

<b>Economic Activity, Benefits and Tax Credits 2008</b>	<b>Ward 3</b>	<b>Perth and Kinross</b>	<b>Scotland</b>
% population who are income deprived	15%	11%	17%
% working age population who are employment deprived	10%	8%	12%
% population aged 16-24 claiming JSA*	2.5%	2.4%	4.5%
% population aged 25-49 claiming JSA*	2.5%	1.8%	2.8%

% population aged 50-pensionable age claiming JSA*	1.7%	1%	1.7%
% population aged 60+ claiming guaranteed pension credits	14.2%	12.6%	18.7%
Income support claimants (Quarter 4 Oct-Dec 2009)	260	3,070	188,710

\* JSA (Job Seekers Allowance)  
Source: SNS extracted June 2010

Levels of both income and employment deprivation within Blairgowrie and the Glens are higher than the average for Perth and Kinross. This effect of this is a higher percentage of JSA claimants in all categories. There are also a higher percentage of people claiming guaranteed pension credit.

The five largest employers based on staffing numbers in Blairgowrie and the Glens Ward are:

- Thomas Thomson (Blairgowrie) Ltd
- Farmcare Ltd t/a The Co-operative Farms
- W P Bruce Ltd
- Tesco Stores Ltd
- Perth & Kinross Council - Blairgowrie High School

## Housing

Last updated | 24/09/2010

This page contains statistics for Housing within the Blairgowrie and Glens Ward. If you would like more general information on Council Housing services please visit the main [Housing pages](#). Details of the local Housing office within Ward 3 can be obtained from the [Housing and Benefits contacts page](#).

### Housing Profile

<b>Council Tax Bands - 2009</b>	<b>Ward 3</b>	<b>PKC</b>	<b>Scotland</b>
% of dwellings in band A	15.3%	13.2%	22.4%
% of dwellings in bands A-C	49.6%	51%	62.1%
% of dwellings in bands D-E	33.6%	30.6%	25.8%
% of dwellings in bands F-H	16.8%	18.4%	12.1%

Source: SNS extracted June 2010

<b>House Types - 2009</b>	<b>Ward 3</b>	<b>PKC</b>	<b>Scotland</b>
Total number of dwellings	5,299	68,507	2,479,954
Flats	20.3%	17,794	948,153
Terraced dwellings	15.3%	10,518	512,411
Semi detached	17.2%	14,367	492,320
Detached dwellings	46.7%	25,695	514,480
Unknown attachment	0.5%	133	12,590

Source: SNS extracted June 2010

<b>Occupancy</b>	<b>Ward 3</b>	<b>PKC</b>	<b>Scotland</b>
% of dwellings that are occupied	94%	95%	96%
% of dwellings that are vacant	3%	3%	3%
% of dwellings that are second homes	3%	3%	1%
% of dwellings that are occupied exemptions	1%	1%	3%
% of dwellings that are single adult discount	32%	34%	38%

Source: SNS extracted June 2010

## Education

Last updated | 22/10/2010

### Pupil Profile

<b>Pupils - 2009</b>	<b>Ward 3</b>	<b>PKC</b>	<b>Scotland</b>
Primary Pupils - Male	344	4,987	186,450
Primary Pupils - Female	320	4,703	178,369
Primary Pupils - Total	664	9,690	364,819
Secondary Pupils - Male	294	3,915	151,359
Secondary Pupils - Female	296	3,925	150,152
Secondary Pupils - Total	590	7,840	301,511

Source: SNS extracted June 2010

### School Rolls

<b>Individual School Pupil Roll Numbers</b>	<b>2007</b>	<b>2008</b>	<b>2009</b>
Blairgowrie High School	940	919	909
Newhill Primary	346	342	321
Kirkmichael Primary	46	47	37
Ratray Primary	272	267	236
Straloch Primary	8	5	5

Strone of Cally Primary	8	4	2
St Stephens RC Primary	57	56	65

Source: PKC Annual School Census

## School Information

School	Handbook	Inspection Reports
Blairgowrie High School	Not yet available	<a href="#">Blairgowrie HM Inspection Follow Up Report 2006 [PDF: 141Kb]</a>
Newhill Primary	<a href="#">Newhill School Handbook 2010 [pdf 235KB]</a>	<a href="#">Hill Primary Inspection Report 2007 [PDF: 179Kb]</a>
Kirkmichael Primary	<a href="#">Kirkmichael School Handbook 2010 [PDF: 179 Kb]</a>	<a href="#">Kirkmichael HM Inspection Report 2010 [PDF: 58Kb]</a>
Ratray Primary	<a href="#">Ratray School Handbook 2009 [PDF: 178Kb]</a>	<a href="#">Ratray HM Inspection Report 2007 [PDF: 44Kb]</a>
Straloch Primary	<a href="#">Straloch School Handbook 2010 [PDF: 317Kb]</a>	<a href="#">Straloch HM Inspection Report 2004 [PDF: 25Kb]</a>
St Stephens RC Primary	Not yet available	<a href="#">St Stephen's HM Inspection Report 2003 [PDF: 33Kb]</a>
Strone of Cally Primary	Mothballed*	<a href="#">Strone of Cally HM Inspection Report 2009</a>

\*This is a term which means that operations in a school have been suspended with pupils being zoned to another catchment area. For more information please see [Review of School Estate – Strone of Cally Primary School \[PDF: 296Kb\]](#)

## Deprivation

Last updated | 10/11/2010

### National Deprivation

The Blairgowrie and Glens ward is unique in Perth and Kinross as it is the only ward out with Perth City that has local areas which are considered deprived as defined by the Scottish Index of Multiple Deprivation (SIMD). The two areas (datazones) are both found within Ratray. Datazones are geographical areas of varying size which have populations of between 500-1000 people. There are 6505 Datazones in Scotland and the SIMD ranked these according to relative deprivation.

In total there are 6 datazones defined by the SIMD as being within the 15% most deprived areas of Scotland, the other four are in Perth City.

### Datazone Profile

Datazone	S01005127	S01005130
Total population	607	613
% Children 2008	17.6% (107)	22.4% (137)
% Working age 2008	56.3% (342)	57.1% (350)
% Pensionable age 2008	26% (158)	20.6% (126)
% Income deprived 2008	34% (206)	35% (215)
% Employment deprived 2008	25% (152)	27% (166)

### Physical Environment

Last updated | 10/11/2010

### Pollution Profile

Pollution Measures	Ward 3	PKC	Scotland
NO <sup>2</sup> concentration: 2002-2004 (Microgrammes per cubic meter)	6.0	9.3	14.4
PM10 concentration: 2002-2004 (Microgrammes per cubic meter)	11.1	11.9	26.6
% of people within 0-500m of any site derelict pre 1991: 2006	13.9%	5.2%	*
% of people within 0-500m of any derelict site: 2006	30.9%	18.2%	*

Source: SNS extracted June 2010

\* Information is only measured at Local Authority Level

### Planning

To view planning application in your area you can search using the Public Access system available through the [main planning pages](#).

### Waste Services

Waste Bin collection dates can be found by using the [find my nearest search](#).

The local recycling centre in Ward 3 is located in Blairgowrie Town at Essendy Road. The percentage of waste recycled from the Blairgowrie site in 2009 was very high with 80% of waste being recycled. Recycling services in the area are also available to residents through the kerbside recycling scheme.

Recycling points are also located at the following locations:

Enochdhu - Dirnanean Car Park  
Kirkmichael - Bannerfield public park car park  
Blairgowrie - Croft Lane Car Park  
Blairgowrie - Tesco, Welton Road

Further details on Waste and recycling services are available from the main [Waste and Recycling Pages](#).

### **Burial Grounds**

The Council is also responsible for maintaining 8 Burial grounds within Blairgowrie and the glens at the following locations:

Bendochy Burial Ground  
Blairgowrie Cemetery  
Kinloch Church Yard  
Kirkmichael Cemetery  
Kirkmichael Churchyard  
Ratray Church Graveyard  
Spittal of Glenshee - Churchyard  
The Hill Church (Churchyard), Blairgowrie

Further information is available on the main [Bereavement Services pages](#).

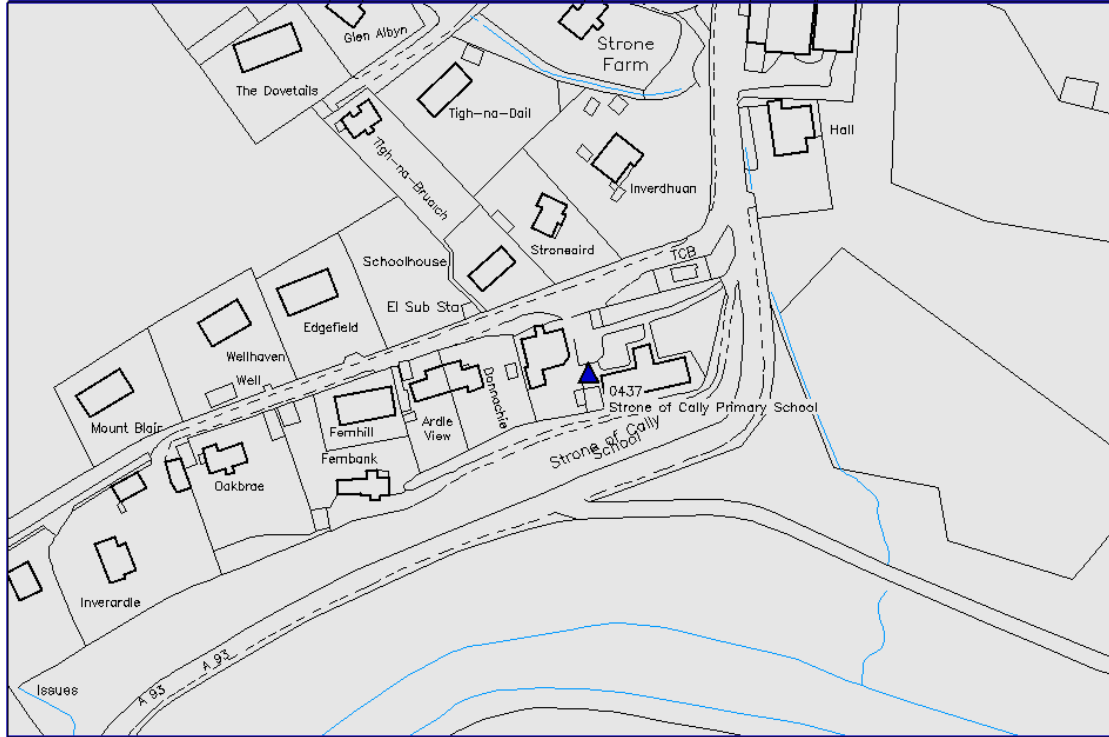
**Historical and Projected Pupil Roll Data for Strone of Cally Primary School**

1999	2000	2001	2002	2003	2004	2005	2006	2007	2008	2009
11	9	9	9	9	12	11	11	8	4	2

Source: [Scottish Government – School Education - Datasets](#)

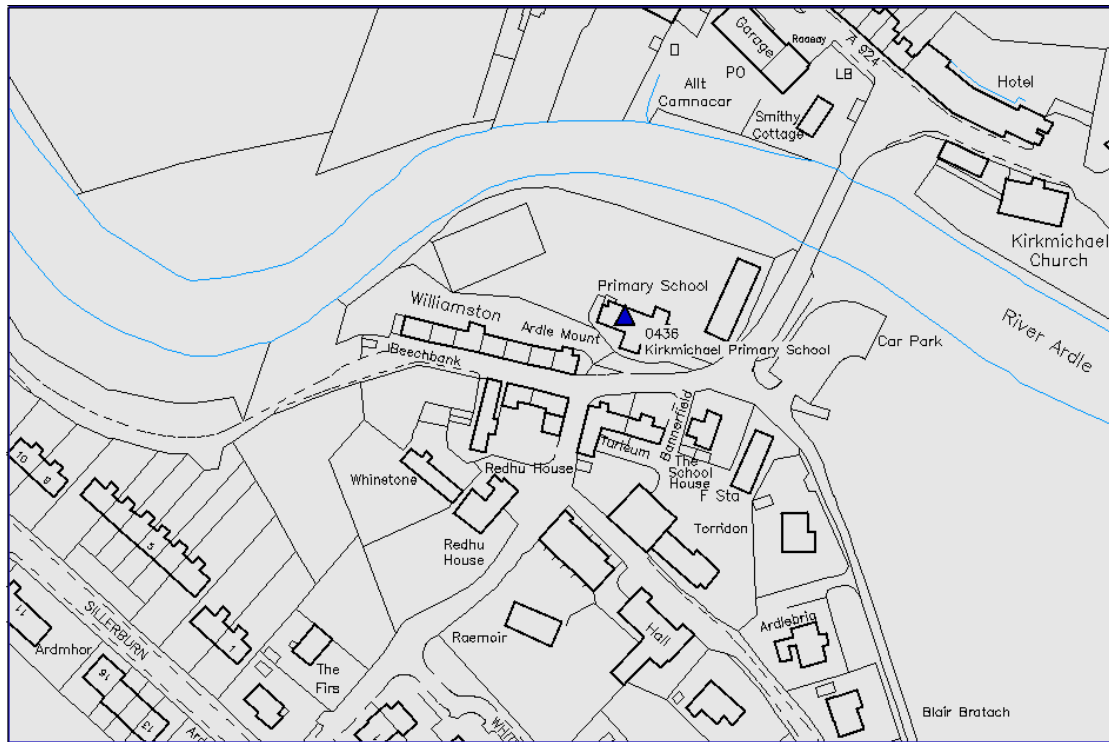
2010	2011	2012	2013	2014	2015	2016	2017	
0	0	0	0	0	0	0	0	(If mothballed)
1	1	1	1	0	0	0	0	(If reopened)

### Strone of Cally Primary School Site Plan

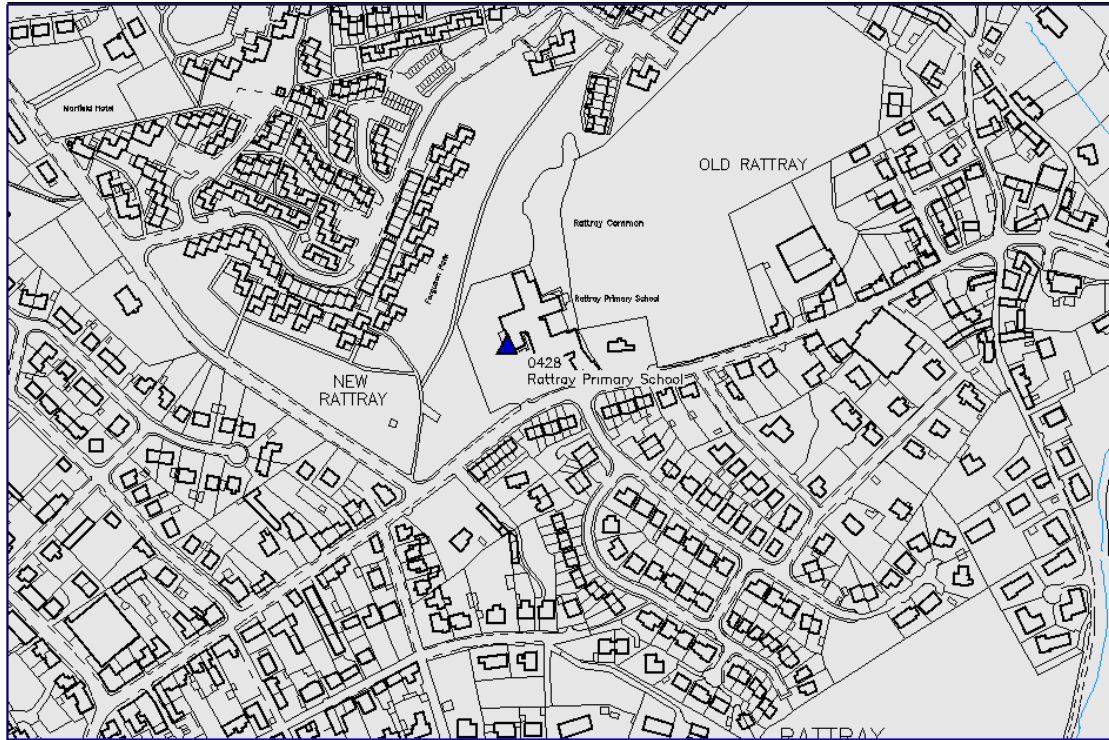




### Kirkmichael Primary School Site Plan



### Ratray Primary School Site Plan



**Strone of Cally Costings**

<b>Strone of Cally DSM Budget Heading</b>	<b>2010-2011 Budget</b>	<b>Options</b>						<b>Comments:</b>
		<b>A (i)</b>	<b>A (ii)</b>	<b>B</b>	<b>C</b>	<b>D</b>	<b>E</b>	
		<b>Costs/ (Savings)</b>	<b>Additional Costs</b>	<b>Costs/ (Savings)</b>	<b>Costs/ (Savings)</b>		<b>Costs/ (Savings)</b>	
		<b>£</b>	<b>£</b>	<b>£</b>	<b>£</b>	<b>£</b>	<b>£</b>	
Staff	81,166	0	41,859	(81,166)	(81,166)	N/A	(81,166)	Budget saving as staff have left/been redeployed into other vacancies
Supply	979	0	895	(979)	(979)	N/A	(979)	Budget saving as costs based on staffing FTE and not pupil no.'s
Staff Training and Review	950	0	0	(950)	(950)	N/A	(950)	Budget saving as increased pupil no.'s would have no impact on Kirkmichael budget allocation
Property	16,202	0	0	(16,202)	(16,202)	N/A	(16,202)	Budget saving only achievable in full if property sold otherwise mothball costs incurred (see notes)
Supplies & Services	1,279	0	0	(639)	(639)	N/A	(639)	) Only small school allowances and flat rate allocations can be saved. Communications ) budget to be transferred in 2010/11 to be managed centrally by IT Services.
Transport	371	0	75	(371)	(371)	N/A	(371)	Budget saving as costs based on staffing FTE and not pupil no.'s
Home to school transport	0	0	0	13,965	13,965	N/A	1,900	Estimated Transport costs
<b>Totals</b>	<b>100,947</b>	<b>0</b>	<b>42,829</b>	<b>(86,342)</b>	<b>(86,342)</b>	<b>N/A</b>	<b>(98,407)</b>	
Potential Mothball Costs	0	0	0	6,000	0	N/A	0	) Estimated costs for basic maintenance and water/ energy. Under options C & D mothballing ) costs would also be incurred if the property was not/ until sold.
<b>Net Saving</b>	<b>100,947</b>	<b>0</b>	<b>42,829</b>	<b>(80,342)</b>	<b>(86,342)</b>	<b>N/A</b>	<b>(98,407)</b>	

**NOTES:****Option A (i)**

No change to current budgets so no finance implications

**Option A (ii)**

Based on estimated numbers of children moving to Strone of Cally from Rattray and Kirkmichael, Strone of Cally would require to be a two teacher school, meaning an increase of 1 Teacher. Rattray and Kirkmichael would be unchanged.

**Option B**

Almost all the DSM budget would be saved in this option. This is offset by increased transport costs which are estimated at this stage. Note that any decision to mothball the school will require £6k per annum to be retained to cover these costs.

**Option C**

The saving with this option is equal to option B excluding mothballing costs.

**Option D**

No costs have been provided for this option as it is not a viable option due to capacity of Strone of Cally.

**Option E**

The savings in this option are similar to option B except transport estimates are based on children using public transport.

**Other**

Any consequential one-off costs arising from the implementation of the proposed option, such as removal of fixtures and fittings are considered minimal and will be met from existing ECS revenue budgets



## PERTH AND KINROSS COUNCIL

### EDUCATION AND CHILDREN'S SERVICES

#### PROPOSAL PAPER

The following schools are affected by this proposal document:

- **Strone of Cally Primary School**
- **Kirkmichael Primary School**

This document has been issued by Perth and Kinross Council for proposal in terms of The Schools (Consultation) (Scotland) Act 2010.

Any Ordnance Survey map data included within this document is provided by Perth and Kinross Council under licence from Ordnance Survey in order to fulfil its public function in relation to this public proposal. Persons viewing this mapping should contact Ordnance Survey Copyright for advice where they wish to licence Ordnance Survey mapping data for their own use.

## DISTRIBUTION

A copy of this document is available on the Perth and Kinross Council website: [www.pkc.gov.uk](http://www.pkc.gov.uk)

A copy of this document will be provided to:

- The Parent Council (if any) of the affected schools
- The parents of the pupils and children who may attend the affected schools
- Parents of children expected to attend an affected school within 2 years of the date of publication of this proposal document
- The teaching and ancillary staff at the affected schools
- The trade union representatives of the above staff
- The Community Councils
- Relevant users of the affected schools
- Elected Members of Perth and Kinross Council
- The Constituency MSP and List MSPs covering the Constituency
- The Constituency MP
- The Executive Director, The Environment Service, Perth and Kinross Council
- Tayside Contracts
- HMIE

A copy of this document is also available from:

- Education and Children's Services, Pullar House, 35 Kinnoull Street, Perth, PH1 5GD
- Council Headquarters, 2 High Street, Perth
- Public libraries in the vicinity of the schools affected
- Local area offices in the vicinity of the schools affected
- Kirkmichael Primary School, Kirkmichael, Blairgowrie, PH10 7NX

This document is available in alternative formats or in translated form for readers whose first language is not English. Please apply to Education and Children's Services, Pullar House, 35 Kinnoull Street, Perth, PH1 5GD by telephone on 01738 476200; or by e-mail: [ECSTGeneralEnquiries@pkc.gov.uk](mailto:ECSTGeneralEnquiries@pkc.gov.uk)

## **SUMMARY OF PROCESS FOR THIS PROPOSAL DOCUMENT**

### **1. Consideration by the Lifelong Learning Committee**

This proposal document has been issued as a result of a decision on 12 January 2011 of the Lifelong Learning Committee of Perth and Kinross Council. This is to seek views on the proposal in this paper.

### **2. Proposal document issued to consultees and published on Council website**

A copy of this document will be issued free of charge to the consultees listed on the preceding page, and it will also be published on the Council website: [www.pkc.gov.uk](http://www.pkc.gov.uk)

### **3. Publication of advertisement in local newspapers**

An advertisement will be placed in the relevant local newspapers. In addition, there may be announcements related to the Proposal process on the local radio station, Radio Tay.

### **4. Length of consultation period**

An advertisement will be placed in local newspapers on 26 January 2011. The consultation will thereafter run until close of business on 25 March 2011, which includes a period of 40 school days.

### **5. Public meetings**

Two public meetings will be held, the details of which are given on page 6 of this document.

### **6. Involvement of HMIE**

When the proposal document is published, a copy will also be sent to HMIE by the Education Authority. HMIE will also receive a copy of any relevant written representations received by the Authority from any person during the consultation period or, if HMIE agree, a summary of them. HMIE will further receive a summary of any oral representations made to the Authority at the public meeting which will be held and, as available (and so far as otherwise practicable), a copy of any other relevant documentation.

HMIE will then prepare a report on the educational aspects of the proposal not later than 3 weeks after the Authority has sent them all representations and documents mentioned above. For the avoidance of doubt, the 3 week period will not start until after the consultation period has ended. In preparing their report, HMIE may enter the affected schools and make such reasonable enquiries of such people there as they consider appropriate and may make such reasonable enquiries of such other people as they consider appropriate.

## **7. Preparation of consultation report**

The Education Authority will review the proposal having regard to the HMIE Report, written representations that it has received and oral representations made to it by any person at the public meeting.

It will then prepare a consultation report. This report will be published in electronic and printed formats and will be advertised in local newspapers. It will be available on the Council website and from Council Headquarters buildings, both at 2 High Street and Pullar House, Perth, public libraries in the vicinity of the affected schools, local offices in the vicinity of the affected schools as well as Kirkmichael Primary School, free of charge. Anyone who made written representations to the Authority during the consultation period will also be informed about the report.

The report will include a record of the total number of written representations made to the Authority during the consultation period, a summary of the written representations, a summary of the oral representations made at the public meeting, the Authority's response to the HMIE Report as well as any written or oral representations it has received, together with a copy of the HMIE Report and any other relevant information, including details of any alleged inaccuracies and how these have been handled. The report will also contain a statement explaining how the Authority complied with the requirement to review the proposal in light of the HMIE Report and representations (both written and oral) that it received. The consultation report will be published and available for further consideration for a period of 6 weeks.

## **8. Decision**

This report together with any other relevant documentation will be considered by the Lifelong Learning Committee of Perth and Kinross Council, who will come to a decision about whether to implement the proposal.

## **9. Scottish Ministers Call-in**

When the Education Authority has made a final decision to implement the proposal, it will require to notify the Scottish Ministers of that decision, and provide them with a copy of the proposal document and consultation report. This must be done within 6 working days of that decision. The Scottish Ministers have a 6 week period from the date of that final decision to decide if they will call-in the proposal. Within the first 3 weeks of that 6 week period, the Scottish Ministers will take account of any relevant representations made to them by any person. Until the outcome of the 6 week call-in process is known, the Authority cannot proceed to implement the proposal.

If the Scottish Ministers call-in the proposal, they may refuse to consent to the proposal or grant their consent to the proposal subject to conditions or unconditionally.

## **10. Note on Corrections**

If any inaccuracy or omission is discovered in this proposal document, either by the Council or any person, the Council will determine if relevant information has been omitted or there has been an inaccuracy. It will then take appropriate action which may include the issue of a correction or the reissuing of the proposal paper or the revision of the timescale for the consultation period if appropriate. In that event, relevant consultees and HMIE will be advised.

## **11. Note**

This consultation is being conducted having regard to the terms of the Schools (Consultation) (Scotland) Act 2010.



## **PUBLIC MEETINGS**

Public meetings will be held in both Bridge of Cally and Kirkmichael to discuss these proposals. Anyone wishing to attend either or both of the public meetings is invited to do so. The meetings, which will be convened by the Education Authority, will be addressed by the Executive Director (Education and Children's Services), or other senior officers of the Council.

The meetings will be an opportunity for interested parties to:

- Hear more about the proposal
- Ask questions about the proposal
- Have their views recorded so that they can be taken into account as part of the consultation process.

The meetings will be held on:

**Venue – Kirkmichael Village Hall**

**Date – Wednesday 23 February 2011**

**Time – 7.00 pm**

**Venue – Bridge of Cally Village Hall**

**Date – Monday 28 February 2011**

**Time – 7.00 pm**

A note will be taken at the meetings of questions and views. This note will be published on the Council website, and a printed copy will be made available upon request.

**PERTH AND KINROSS COUNCIL  
EDUCATION AND CHILDREN'S SERVICES**

**THIS IS A PROPOSAL DOCUMENT**

Proposal:

That subject to the outcome of this proposal exercise:

- Education provision at Strone of Cally Primary School be discontinued with effect from Wednesday 27 June 2012, or as soon as possible thereafter;
- That the pupils of Strone of Cally Primary School receive their education at Kirkmichael Primary School, from Tuesday 14 August 2012 or as soon as possible thereafter; and
- That the delineated area of Kirkmichael Primary School be extended to subsume the whole delineated area of Strone of Cally Primary School from Tuesday 14 August 2012.

## **1. BACKGROUND**

- 1.1 Strone of Cally Primary School is a single teacher primary school serving the village of Bridge of Cally and the surrounding area. The capacity of Strone of Cally Primary School is 50 pupils. At September 2009, there were 2 pupils attending Strone of Cally Primary School, with no children attending by way of placing request. The projected roll at Strone of Cally Primary School for August 2010 was to be 1 pupil.
- 1.2 The situation at Strone of Cally Primary School has been carefully monitored and kept under review by the Head of Education Services (Primary & Early Years) in terms of pupil numbers, the very small number of pupils in attendance and requests for future pupil enrolments. Only 1 pupil was due to be in attendance during school session 2010/2011. A decision was taken to “mothball” Strone of Cally Primary School from August 2010 (this is a term which means that operations in a school have been suspended with pupils being zoned temporarily to another catchment area).
- 1.3 The pupil roll at Strone of Cally Primary School has continued to decline over a period of years and only 1 pupil was due to be in attendance during school session 2010/2011. Strone of Cally Primary School catchment area has been temporarily rezoned to Kirkmichael Primary School for the period where Strone of Cally Primary School remains “mothballed”.

- 1.4 Seven pupils from the Strone of Cally Primary School catchment area currently attend Kirkmichael Primary School as a result of successful placing requests.  
The highest projected roll for Strone of Cally Primary School to 2017/2018 is 4 pupils.
- 1.5 Kirkmichael Primary School has a roll of 39 pupils (as at Census 2010) and capacity for 72 pupils. Kirkmichael Primary School is situated 7.3 miles from Strone of Cally Primary School.
- 1.6 At its meeting on 25 August 2010, the Lifelong Learning Committee of Perth and Kinross Council approved Report 10/425 by the Executive Director (Education and Children's Services). It agreed to proceed to undertake an Options Appraisal, and, if appropriate, produce a Proposal Paper containing an Educational Benefits Statement in respect of Strone of Cally Primary School.
- 1.7 This followed the preparation of an Options Appraisal which assessed past and current school rolls together with future roll projections across the school estate.
- 1.8 The consultation process to be carried out in consequence of the Committee's decision, and involving Her Majesty's Inspectorate of Education (HMIE) and the general public, will be in terms of the Schools (Consultation) (Scotland) Act 2010.

## **2. PROPOSAL**

- 2.1 It is therefore proposed that:

**Proposal:**

- Education provision at Strone of Cally Primary School be discontinued with effect from Wednesday 27 June 2012, or as soon as possible thereafter;
- That pupils from Strone of Cally have their education provided at Kirkmichael Primary School, from Tuesday 14 August 2012 or as soon as possible thereafter; and
- The delineated area of Kirkmichael Primary School be extended to subsume the whole catchment area of Strone of Cally Primary School from Tuesday 14 August 2012.

### **3. STATUTORY RESPONSIBILITIES**

- 3.1 Councils have a statutory duty in terms of the Education (Scotland) Act 1980 to make adequate and efficient provision of school education across their entire area for the current school population and future pattern of demand. The Council's School Estate Management Plan, approved by the Lifelong Learning Committee of Perth and Kinross Council in November 2007, provides information on the whole of the school estate and provides information about overall objectives and future priorities within Perth and Kinross Council.
- 3.2 Councils also have a statutory responsibility in terms of the Local Government in Scotland Act 2003 to achieve best value. In doing so, consideration must be given to occupancy as buildings are expensive resources. To achieve best value and optimum efficiency, the minimum number of buildings is required to deliver Council services to a particular locality. The organisation of the school estate is therefore kept under regular review, including the need for school provision and other factors, such as altering catchment areas and the implementation of shared headships.

### **4. VISION**

- 4.1 Perth and Kinross Council works to enhance quality of life, make best use of public resources and ensure continuously improving services. Perth and Kinross Council's corporate strategy "Securing the Future" aims to ensure that individuals, families and communities experience the best possible outcomes from a range of services. Perth and Kinross Council has a strong identity and clear priorities which everyone works together to achieve, creating areas which are vibrant and successful; safe, secure, healthy and sustainable environments; educated, responsible and informed citizens; confident and active communities; and places where people are nurtured and supported.
- 4.2 This approach reflects the Single Outcome Agreement National Outcome 15 that "Our public services are high quality, continually improving, efficient and responsive to local people's needs", and the Local Outcome that "Our services will be responsive, of high quality and continually improving". This report also links with the School Estate Management Plan, Education and Children's Services Policy Framework Maximising Resources and with the Education and Children's Services objective to develop the range and quality learning experiences for all.

## **5. BRIDGE OF CALLY AND THE LOCAL AREA**

- 5.1 Bridge of Cally is located in the foothills of Glenshee approximately 6 miles from Blairgowrie and lies on the highland fault line. The village is a small rural settlement sitting amidst beautiful scenery, farming and Dalmunzie Estate land. The area is sparsely populated and classified as remote rural.
- 5.2 There are hotels and various holiday cottages and bed and breakfasts which accommodate visitors to this picturesque area and the winter sporting facilities at nearby Glenshee. The attractions accessible from the area include fishing, mountain biking, walking, golfing (Blairgowrie and Alyth) and pony trekking (Glenmarkie), with the Cateran Trail running through Bridge of Cally.
- 5.3 Bridge of Cally has a well used village hall which caters for a wide range of community events such as regular keep fit and carpet bowls sessions as well as table top sales and quiz nights. The school has not been used outwith normal school hours for any non-related school activities.
- 5.4 The local village shop and post office won the Scottish Countryside Alliance's "Best Village Shop and Post Office Award" in 2009.
- 5.5 In terms of potential new business ventures in the area, enquires for advice and support to Perth and Kinross Council and Business Gateway have been checked and there have been no enquires received over the past few years by either.

## **6. STRONE OF CALLY PRIMARY SCHOOL**

- 6.1 Strone of Cally Primary School provides non denominational primary education to pupils from the village of Bridge of Cally and surrounding area. Appendix 1 (attached) shows the present school catchment area for Strone of Cally Primary School. The school site for Strone of Cally Primary School is attached as Appendix 3. Strone of Cally Primary School is a single teacher school. The catchment area for the school covers an area of 66.506 square kilometres (25.678 square miles)
- 6.2 The school structure had 1 composite class made up as follows:  
Primary 1-7
- 6.3 Historical and projected pupil roll data for Strone of Cally Primary School is attached at Appendix 5. This data shows that the roll of Strone of Cally Primary School has been falling over the last decade, with pupil numbers unlikely to increase significantly. As highlighted in paragraph 1.1, none of the pupils are enrolled by way of placing request.

- 6.4 Strone of Cally Primary School is classed as a “remote rural” school under Section 14 of the Schools (Consultation) (Scotland) Act 2010. The classification of rural and remote rural is based on two main criteria, settlement size and accessibility based on drive time. For Strone of Cally Primary School the classification criteria is “*settlements of fewer than 3,000 people and with a drive time of between 30 and 60 minutes to a settlement of 10,000 or more*”.
- 6.5 When Strone of Cally Primary School was last operational, 2 pupils attended the school and 7 pupils within the Strone of Cally Primary School catchment area attended Kirkmichael Primary School as a result of placing requests. In addition, 3 pupils within the Strone of Cally Primary School catchment area attended Rattray Primary School as a result of placing requests.
- 6.6 Of the pupils who were attending Strone of Cally Primary School none were entitled to home to school transport as they lived within 2 miles of the school.
- 6.7 Strone of Cally Primary School main building comprises a ‘T’ shaped ‘Elliot’ type single storey building, with a shallow pitched roof, single glazed metal windows, timber external doors, UPVC gutters and downpipes. The walls are painted timber externally, with horizontal boarding at low level covering the foundations. There are studwork partitions internally throughout. The heating is electric.
- 6.8 In terms of asset management, the main building at Strone of Cally Primary School has been classed by Perth and Kinross Council Property Services as needing replacement within the medium term. Medium term life expectancy in this context means being deemed to come to the end of its economically useful life within the next 10 years.
- 6.9 Also on the school site are a disused store, shelter shed, timber shed and dining block. The school grounds are a mix of hard and soft landscaping. The gardens are well maintained with planters and flower and vegetable beds.
- 6.10 There is a memorial garden at Strone of Cally Primary School called Abby’s Garden. Fundraising events took place to form the garden where a pergola was built, 2 picnic tables purchased as well as tubs for flowers and planting. After the decision was made to mothball Strone of Cally Primary School, it was agreed by the PTA that Abby’s family would be given the pergola and 1 of the picnic tables. The other picnic table will go to the village hall along with the plants and planters if the school is to close.

6.11 Within the existing Strone of Cally Primary School, the following facilities and accommodation are offered:

- 2 classrooms for primary education
- toileting facilities
- staffroom
- library
- office accommodation
- dining accommodation

6.12 Throughout Scotland, core facts are gathered and published on school buildings. The definition and assessment categorisations are set by the Scottish Government as follows:

Condition <sup>(1)</sup> -is an assessment of the physical condition of the school and its grounds. Categorisation is as follows:

- A: Good – Performing well and operating efficiently
- B: - Satisfactory – Performing adequately but showing minor deterioration
- C: Poor – Showing major defect and/or not operating adequately
- D: Bad – Life expired and/or serious risk of imminent failure

Suitability <sup>(2)</sup> -is an assessment of the school as a whole, its buildings and its grounds and of the impact these have on learning and teaching, leisure and social activities and the health and well-being of all users. Categorisation is as follows:

- A: Good – Performing well and operating efficiently
- B: Satisfactory – Performing well but with minor problems
- C: Poor – Showing major problems and/or not operating optimally
- D: Poor – Does not support the delivery of services to children and communities

Sufficiency <sup>(1)</sup> -states the occupancy – pupil roll divided by capacity expressed as a percentage.

Source: (1) *Core Facts Building Our Future: Scotland's School Estate 2003*  
(2) *The Suitability Core Fact: Scotland's School Estate 2008*

6.13 The condition surveys are undertaken on a three year rolling programme by a Perth and Kinross building surveyor team led by a chartered building surveyor. The suitability assessment is undertaken by the Headteacher and validated by senior managers within Education and Children's Services. These assessments were undertaken annually until 2010, but it has now been agreed that these will be undertaken every three years unless significant building or operational change has occurred within the school.

6.14 The core facts for Strone of Cally Primary School categorise both the building's condition and suitability as B (Satisfactory). The sufficiency (occupancy) of the school at the September 2010 school census is 0% as the school is mothballed.

6.15 Expenditure/investment within the buildings at Strone of Cally Primary School over the past three financial years is given below:

	2007/08	2008/09	2009/10
£'s	4,250	32,300	7,860

These figures reflect minor repairs, servicing and maintenance costs at Strone of Cally Primary School. The larger figure in 2008/09 was incurred to replace the fire alarm and emergency lighting at the school.

Planned works identified for future years, and subject to budget availability, include replacing the heating system, replacing windows and external painter work.

## 7. KIRKMICHAEL PRIMARY SCHOOL

7.1 Kirkmichael Primary School provides non denominational primary education to pupils from the village of Kirkmichael and surrounding area. Appendix 2 (attached) shows the present school catchment area for Kirkmichael Primary School. The school site for Kirkmichael Primary School is attached as Appendix 4. Currently, 39 pupils attend Kirkmichael Primary School.

7.2 Kirkmichael Primary School is a 2 teacher school serving the village of Kirkmichael and the local area. The catchment area for the school covers an area of 109.186 square kilometres (73.431 square miles).

7.3 Kirkmichael Primary School is classed as a "remote rural" school under Section 14 of the Schools (Consultation) (Scotland) Act 2010. The classification of rural is based on two main criteria, settlement size and accessibility based on drive time. For Kirkmichael Primary School the classification criteria is "*settlements of fewer than 3,000 people and with a drive time of between 30 and 60 minutes to a settlement of 10,000 or more*".

7.4 The primary school structure currently has 2 composite classes made up as follows:

Primary 1-4  
Primary 5-7

7.5 Historical and projected pupil roll data for Kirkmichael Primary School is attached at Appendix 6.



7.6 The main school building is a pre-1919 two storey stone building under a pitched slate roof with cast iron gutters and downpipes. The building sits below road level and the site overlooks the river. There is a large outdoor area with a mix of hard and soft landscaping and a multi use games area. The heating is electric. Also on the school site are 4 timber storage sheds.

7.7 The following facilities and accommodation are offered:

- 3 classrooms for primary education
- nursery
- toileting facilities
- staff/resources room
- dining accommodation/ general purpose room
- Headteacher's room
- Small reception office
- Storage

7.8 The core facts for the school categorise both the building's condition and suitability as B (Satisfactory). The sufficiency (occupancy) based on the 2010 school census is 51.4%.

7.9 Expenditure/investment within the school buildings at Kirkmichael Primary School over the past three financial years is given below:

	2007/08	2008/09	2009/2010
£'s	241,317	11,112	13,533

These figures reflect minor repairs, servicing and maintenance costs at Kirkmichael Primary School. The larger figure in 2007/08 reflects the investment of a two room extension at Kirkmichael Primary School that resulted from a recommendation for improving the accommodation at Kirkmichael Primary School in the HMle report in November 2001. This accommodation houses a nursery class and a primary one class.

7.10 The impact of new housing in the Kirkmichael Primary School catchment area was examined by looking at planning applications lodged with Perth and Kinross Council. As at 14 October 2010, there were 20 approved applications for a total of 25 houses. Applying the formula used within Perth and Kinross of 0.27 of a primary pupil being generated from one house, this would generate a requirement of 6.75 places. There are three pending applications which would generate 2.43 primary pupil places which together, when rounded up, would result in 10 potential primary pupil places in total. This would give a potential occupancy at Kirkmichael Primary School of 69.4%.

## **8. THE OPTION FOR CONSULTATION FROM OPTIONS APPRAISAL**

- 8.1 The Options Appraisal has demonstrated that the option for the cessation of education provision at Strone of Cally Primary School represents the best value for education purposes.

## **9. EDUCATIONAL BENEFITS STATEMENT**

### **9.1 Cessation of educational provision at Strone of Cally Primary School and relocation to Kirkmichael Primary School**

- 9.1.1 At the end of June 2010, Strone of Cally Primary School was 'mothballed', as only one of the two pupils on the roll was due to be in attendance for session 2010/11, and the pupil roll had been very low for a number of years.
- 9.1.2 The Strone of Cally Primary School catchment area was re-zoned to Kirkmichael Primary School for the period during which Strone of Cally Primary School remains 'mothballed'. Seven pupils from the Strone of Cally catchment area currently attend Kirkmichael Primary School as a result of successful placing requests.
- 9.1.3 All staff still employed at Strone of Cally Primary School have at present been re-deployed elsewhere.

#### **9.1.4 The educational benefits of the proposal are as follows:**

- (i) Kirkmichael Primary School offers a learning environment that encourages high levels of attainment and provides a wide range of opportunities for children to achieve their full potential as successful learners, confident individuals, responsible citizens and effective contributors.
- (ii) In the primary classes, high standards in English language and mathematics have been maintained over the last three years.

Most children achieve appropriate national levels in reading, writing and mathematics with the majority achieving these earlier than might be expected. Teachers are good at meeting children's learning needs. They interact with children well and give them positive support. In the nursery class children enjoy a range of experiences. Nursery staff take good account of children's individual circumstances and needs.

- (iii) Children are offered a broad range of active, well-planned experiences which help them develop the knowledge and understanding, skills, capabilities and attributes which they need for their mental, emotional, social and physical wellbeing both now and in the future. Children's learning needs are accurately identified and supported.

- (iv) In recent years pupils in Kirkmichael Primary School have been taught in two or three classes composed of a number of children from more than one year group. They benefit from being part of a social context in which they can build relationships with different groups and individuals, develop social skills, meet challenges and exercise responsibilities as members of a social group. They are able to interact and socialise with groups of children of their own age and gender, take part in team activities and move with their peers to secondary school. The children contribute to school improvement through participating in a range of committees such as the pupil council, health and enterprise groups or by acting as junior road safety officers.
  
- (v) At Kirkmichael Primary School the children benefit from a range of facilities and resources. As well as up to date class and ICT resources there is a separate dining area and an extensive outdoor area which includes a large grassy section, a garden and a multi-use games area which facilitate eco learning and promote health and wellbeing through play and team games. The whole outdoor area is enclosed for children to learn and play together during curricular and play times. The school makes very good use of the school grounds and the local area for outdoor learning in curriculum areas such as science, mathematics and art.
  
- (vi) Kirkmichael Primary School has a new purpose built nursery / early years classroom block. The co-location of the nursery and primary classes within the same campus enhances the transition process for the children moving from nursery into primary one through joint educational programmes and liaison between the two settings.
  
- (vii) There is a continual challenge for all schools to deliver a quality improvement agenda and deliver effectively the principles and outcomes of Curriculum for Excellence to enhance the educational experience for the children. At Kirkmichael Primary School, staff are challenged and supported through a range of continuous professional development and review opportunities gained by working and learning with a range of colleagues.  
  

These are offered through a planned programme of development activities and opportunities for quality professional dialogue on an ongoing basis. A collegiate approach to professional engagement amongst all staff, including visiting specialist teachers, is evident within the school. They come together regularly to review and improve practice as a school, with partner services and other schools. This enhances the quality of learning and teaching through shared opportunities to develop effective approaches to learning and teaching and to share and moderate standards.
  
- (viii) The children from both Strone of Cally Primary School and Kirkmichael Primary School transfer to the same secondary school. There would be no impact on any other secondary school.

- (ix) The present users of Kirkmichael Primary School would not be disadvantaged in any way by the addition of children from Strone of Cally Primary School as there is adequate capacity to cater for the numbers and needs of both groups of children and their parents.
- (x) The likely effects of the proposal and the number of children involved would have limited impact on the current teaching sets within Kirkmichael Primary School, which currently sit within the Government class size guidelines.
- (xi) Children will also benefit from access to a range of community facilities which are in close proximity to Kirkmichael Primary School, including the village hall, the Session House, the shop and local businesses.
- (xii) Children will have access to a broad range of extra-curricular activities at both school and Authority level. During session 2009-2010 the school provided a range of lunchtime and after school sports clubs including for example football, netball, gardening, cookery and a website club.
- (xiii) Parents and children at Strone of Cally Primary School will have the opportunity to participate in, and benefit from the work of the Parent Council at Kirkmichael Primary School.
- (xiv) If implemented, the prime consideration for the Council will be to minimise any adverse impact on the learning and teaching of children from Strone of Cally Primary School catchment area and alleviate the concerns of parents.

In summary:

The children and parents of Strone of Cally Primary School will have access to an educational establishment which meets the needs of all children and which has a comprehensive and well planned approach to taking forward improvement. There is more than enough capacity at Kirkmichael Primary School to fully meet the needs of the Strone of Cally Primary School children without disrupting the learning of the Kirkmichael Primary School children.

## **9.2 Alternatives to the Closure Proposal**

9.2.1 The options considered as a result of the appraisal exercise were:

- a) i) keep Strone of Cally Primary School open with its existing catchment area
- ii) keep Strone of Cally Primary School open and redelineate the catchment area to extend the catchment area
- b) continued mothballing of Strone of Cally Primary School, subject to regular review

- c) close Strone of Cally Primary School and transfer the pupils to Kirkmichael Primary School and redelineate the catchment area
  - d) close Kirkmichael Primary School and transfer the pupils to Strone of Cally Primary School and redelineate the catchment area
  - e) close Strone of Cally Primary School and transfer the pupils to Rattray Primary School and redelineate the catchment area
- 9.2.2 The provision of primary education within Strone of Cally needs to be considered in the context of the needs of the pupils and the local community, both now and in the future.
- 9.2.3 The following points were all considered when arriving at the decision to propose a statutory consultation exercise be undertaken on the potential closure of Strone of Cally Primary School. The declining pupil roll at Strone of Cally Primary School over the past ten years is not expected to rise in any significant way based on the general population trends in Blairgowrie and the Glens ward, even when allowing for the potential numbers of pupils arising from housing developments in the area in addition to the projected pupil numbers.
- 9.2.4 Future plans for potential land use in Perth and Kinross appear in the Main Issues Reports (MIR) for the TAYplan and Perth and Kinross Local Development Plan (LDP). The TAYplan contains an estimate that to meet the population projections, between 910 - 990 additional houses will be constructed per year across Perth and Kinross.
- 9.2.5 Within the Strathmore and Glens area of the MIR of the LDP (this used to be called Eastern area in the current LDP. The new draft LDP will cover the whole of Perth and Kinross now but the Blairgowrie/Eastern area is now referred to as Strathmore and the Glens), this would equate to approx 75 - 85 houses per year (at the high end development which is the upper estimate for the number of houses that could be built each year).
- 9.2.6 The TAYplan sets out a hierarchical approach to directing new development to existing settlements and identifies Blairgowrie and Rattray as proposed second tier settlements which would take the largest proportion of any new development, with the remainder being split between the third tier settlements of Alyth and Coupar Angus.
- 9.2.7 In line with the TAYplan MIR, little development is likely to be identified outwith these settlements in the LDP and any development is likely to be of small scale (less than 5 houses).
- 9.2.8 If Strone of Cally Primary School had not been mothballed, the highest projected roll for Strone of Cally Primary School between 2010 and 2017 was anticipated to be 4 pupils in 2011, falling to 3 pupils between 2012 and 2017.

The table below shows the potential future pupil numbers at both Strone of Cally Primary School and Kirkmichael Primary School:

	Pupils	Potential Pupils <sup>1</sup>	Total
Strone of Cally Primary School	1	3	4
Kirkmichael Primary School	39	10	49
Total	40	13	53

<sup>1</sup> *Potential pupils generated from known planning applications*

- 9.2.9 The possible number of potential primary pupils who could require primary education within the combined Strone of Cally and Kirkmichael Primary Schools catchment area is 53 pupils. This exceeds the capacity of Strone of Cally Primary School and would represent occupancy of 73.6% at Kirkmichael Primary School.
- 9.2.10 The size of the catchment area for Strone of Cally Primary School is smaller than Kirkmichael Primary School catchment area. However, it is over a less mountainous topography. The size of the catchment area for Strone of Cally Primary School is not unusual for a rural school in Perth and Kinross.
- 9.2.11 Seven of the Strone of Cally Primary School catchment pupils already attend Kirkmichael Primary School as a result of successful placing requests. It is possible that parents of pupils who currently attend rural primary schools may find it more acceptable for their children to continue to be educated in a rural school.
- 9.2.12 A travel distance of 7 miles is not an unreasonable distance to expect children to travel for primary school education. Pupils who attend Kirkmichael Primary School as a result of successful placing requests already travel this distance. Other catchment areas in Perth and Kinross also have such a travel distance within them. However, it is recognised that adverse weather in the winter currently impacts on travel arrangements in this area. In session 2009/2010, Kirkmichael Primary School was completely closed due to severe weather for 1 day. In addition, there were 6 days where children on school transport were unable to attend due to severe weather. To date (in Session 2010/2011), there have been 5 days where the school has been completely closed as a result of severe weather which affected the whole of Perth and Kinross.

- 9.2.13 If Strone of Cally Primary School was left mothballed on an indefinite basis, it would incur annual costs to maintain the building. Unoccupied buildings can deteriorate more rapidly than operational premises and can become a focus for vandals whether the premises are located in urban or rural areas. Repair works to rectify possible issues have not been included in the costings within this report.
- 9.2.14 The main building has been classed as requiring replacement on a medium term basis and this would incur additional capital expenditure, depending upon the scale of replacement accommodation predicted to be required.
- 9.2.15 If Strone of Cally Primary School was to close and the pupils transfer to Rattray Primary School there would be sufficient capacity to accommodate current and future pupils within the school accommodation. Parents in a rural community may prefer to continue their children's education within a rural school setting.

### **9.3 Likely effect on the local community**

- 9.3.1 It is believed that this proposal will not adversely impact on local, social or economic activities. The school is mainly utilised for parent events. There are no recorded events of the school being used for any non-parental community events in recent years.
- 9.3.2 Lets at Strone of Cally Primary School are normally arranged for parental activities such as parent evenings and fundraising events. There were no recorded lets for community use in 2009/2010.  
Lets at Kirkmichael Primary School are also normally arranged for parental activities such as Parent Council meetings, parent evenings and school activities. The number of recorded lets (for Councillor's Surgery) in 2009/2010 was 8. No lets for community use were recorded.
- 9.3.3 Again, every effort will be made to accommodate any activities within Kirkmichael Primary School. The facilities within the Kirkmichael Primary School building are suitable for the promotion of community use outside school hours.
- 9.3.4 As the distance to Kirkmichael Primary School is 7.3 miles it is believed that there will be no significant impact for the wider community from Strone of Cally Primary School catchment area to access the range of activities which are located at Kirkmichael Primary School.
- 9.3.5 The likely effect of the closure proposal would not impact on the Parent Council of Strone of Cally Primary as, currently, there is no Parent Council at Strone of Cally Primary School.

- 9.3.6 Under section 12 of the Schools (Consultation) (Scotland) Act 2010 it has been assumed that Kirkmichael Primary School is a remote rural school.

This means that although based in a rural setting, the school is within close proximity to Blairgowrie and within reasonable commuting distance to Perth and the amenities which are located in these centres.

#### **9.4 Likely effect caused by different travelling arrangements**

- 9.4.1 There were no transport contracts in place to Strone of Cally Primary School as there were no pupils entitled to transport. The travelling distance from Strone of Cally Primary School to Kirkmichael Primary School is 7.3 miles and is estimated to take 20 minutes. The Council has estimated that the cost of this additional travelling distance will be £11,197 per annum.
- 9.4.2 The environmental impact of the preferred option is if Strone of Cally Primary School was to close and the pupils transfer to Kirkmichael Primary School there would be an environmental impact from the transporting of approximately 3 pupils. However, this would be offset by the need no longer to run the Primary School. At Kirkmichael Primary School, the 3 additional pupils could be accommodated without any significant additional impact.
- 9.4.3 Should the proposal be accepted by the Council following the consultation period, staff who reside outwith the area who transfer to Kirkmichael Primary School may be required to travel an additional distance of 7.3 miles to school.
- 9.4.4 If staff are deployed to another educational establishment other than Kirkmichael Primary School, this will be conducted under existing Council terms and conditions with attempts being made, where possible, to minimise any additional distance that they may require to travel.

### **10. CONCLUSION**

- 10.1 In summary, it is proposed that a statutory consultation exercise takes place on a proposal to close Strone of Cally Primary School, transfer the pupils to Kirkmichael Primary School and redelineate the catchment area of Strone of Cally Primary School to Kirkmichael Primary School. Currently, only a small number of Strone of Cally parents wish to have their child attend the local school. The majority of local parents have already demonstrated their desire to have their children educated within neighbouring catchment schools through successful placing requests.
- 10.2 Future pupil projections have been considered and Kirkmichael Primary School can accommodate all projected and potential pupils from the combined catchment areas. A higher occupancy level maximises use of the school estate and represents good asset management.



- 10.3 Travel distance to the neighbouring school is not excessive and pupils attending Kirkmichael Primary School already make this journey. However, it is recognised that adverse weather in the winter currently impacts on travel arrangements in this area.
- 10.4 Environmental impacts have been summarised and detailed work will be done as part of the environmental assessment for this proposal.
- 10.5 The local community is served by a well used hall which acts as a focal point for community events and closure of the school would have no impact on this. Community capacity building can assist to maintain community contacts.

## **11. CONSEQUENCES OF THE PREFERRED OPTION**

- 11.1 The proposal will result in pupils of Strone of Cally Primary School being part of a learning environment which supports and develops the emotional, social and educational needs of the children. The staff, Parent Council and community will be consulted fully on the development of plans for the integration of pupils from Strone of Cally Primary School into Kirkmichael Primary School, if necessary.
- 11.2 Where necessary, any aspect of the implementation of these proposals that impacts on staff will result in consultation with the relevant trade unions and the individuals concerned.
- 11.3 The proposal will result in Strone of Cally Primary School being declared surplus to the requirements of Perth and Kinross Council and the building offered for sale on the open market.
- 11.4 The delineated area of Kirkmichael Primary School will require to be extended to subsume the whole delineated area of Strone of Cally Primary School.

## **12. OTHER ISSUES**

### **Management of Proposals**

- 12.1 It is intended that pupils from Strone of Cally Primary School will be integrated within Kirkmichael Primary School from the start of the 2012/13 academic session, which commences on Tuesday 14 August 2012, or as soon as possible thereafter. This will allow the Council to conduct the necessary consultation in accordance with the relevant statutory frameworks.

- 12.2 It is acknowledged that should the proposal be approved and implemented, forward planning will be required from Education and Children’s Services and school senior staff, as a matter of good management practice. This planning is necessary in respect of curriculum delivery, staff management and associated issues.

### **13. FINANCIAL IMPLICATIONS**

- 13.1 The annual recurring savings of the preferred option is made up of staff costs and building running costs. The financial implications of this proposal are as follows;

OPTION	SAVINGS
Cease education provision at Strone Of Cally Primary School and integrate within Kirkmichael Primary School	£86, 342

- 13.2 Financial savings generated from closing Strone of Cally Primary School amount to £86,342 on an annual basis. This saving is predominantly made up of staff costs and building running costs.
- 13.3 On 30 June 2010, the Council approved the report Securing the Future – Towards 2015 and Beyond (Report 10/357 refers). This report set out our continuing strategy for securing the future, aiming to support the delivery of savings through revised service delivery models and ongoing improvement activities in the Council. Education and Children’s Services Service Review Programme within this report contains a re-design project to “review the school estate”.
- 13.4 On 25 August 2010, the Lifelong Learning Committee approved the report Review of School Estate – Strone of Cally Primary School (Report 10/425 refers). This report sought approval to proceed with undertaking an Options Appraisal and, if appropriate, produce a Proposal Paper containing an Educational Benefits Statement in respect of Strone of Cally Primary School.
- 13.5 Therefore, any savings arising from the proposed option to close Strone of Cally Primary School will be allocated against Education and Children’s Services budget savings targets which have currently been set for the period 2011-2014.
- 13.6 This will mitigate against making alternative budget reductions within other areas of Education and Children’s Services, with a corresponding reduction in service delivery in that area.

- 13.7 The annual budget is built reflecting cost drivers such as the number of schools, buildings, staff and pupils. If Strone of Cally Primary School were to be closed then future years' budgets would not contain any allowance for staffing Strone of Cally Primary School and there would be reduced property costs (and possibly no costs should the building be sold in the future). Any per capita budgets relating to individual pupils would continue to be budgeted against the school that these pupils would attend following the closure of Strone of Cally Primary School.
- 13.8 It is envisaged that the existing Strone of Cally Primary School will be offered for sale on the open market. This will minimise security costs and also minimise the risks associated with vacant buildings.

#### **14. RESPONDING TO THE PROPOSAL**

- 14.1 Interested parties are invited to respond to the proposal by making written or electronic submissions on the proposal to Strone of Cally Primary School Consultation, Education and Children's Services, Pullar House, 35 Kinnoull Street, Perth, PH1 5GD, and e-mail: [ECSStatutoryconsultations@pkc.gov.uk](mailto:ECSStatutoryconsultations@pkc.gov.uk)
- 14.2 A form is provided at Appendix 7 for the convenience of those wishing to respond. Its use is not compulsory. However, those wishing to respond are invited to state their relationship with the school – for example, "pupil", "parent", "grandparent", "former pupil", "teacher in school", "member of the Community" etc. Responses from the Parent Councils, staff, and Pupil Council are particularly welcome.
- 14.3 Those sending in a response, whether by letter or electronically, should know that their response will be open to public scrutiny and may have to be supplied to anyone making a reasonable request to see it.
- 14.4 If they do not wish their response to be publicly available, they should clearly write on the document: "I wish my response to be considered as confidential with access restricted to elected members and council officers of Perth and Kinross Council." Otherwise, it will be assumed that the person making the response agrees to it being made publicly available.

#### **15. RECOMMENDATIONS**

- 15.1 The Lifelong Learning Committee of Perth and Kinross Council agrees to adopt, for the purpose of consultation, the proposal that:
- (i) Education provision at Strone of Cally Primary School be discontinued with effect from Wednesday 27 June 2012, or as soon as possible thereafter;

- (ii) Further that the pupils of Strone of Cally Primary School receive their primary school education at Kirkmichael Primary School, from Tuesday 14 August 2012 or as soon as possible thereafter; and
- (iii) The delineated area of Kirkmichael Primary School be extended to subsume the whole delineated area of Strone of Cally Primary School from Tuesday 14 August 2012.

15.2 It is also recommended that:

- i) interested parties be invited to make written submissions on the proposal to:

Strone of Cally Primary School Consultation, Education and Children's Services, Pullar House, 35 Kinnoull Street, Perth, PH1 5GD

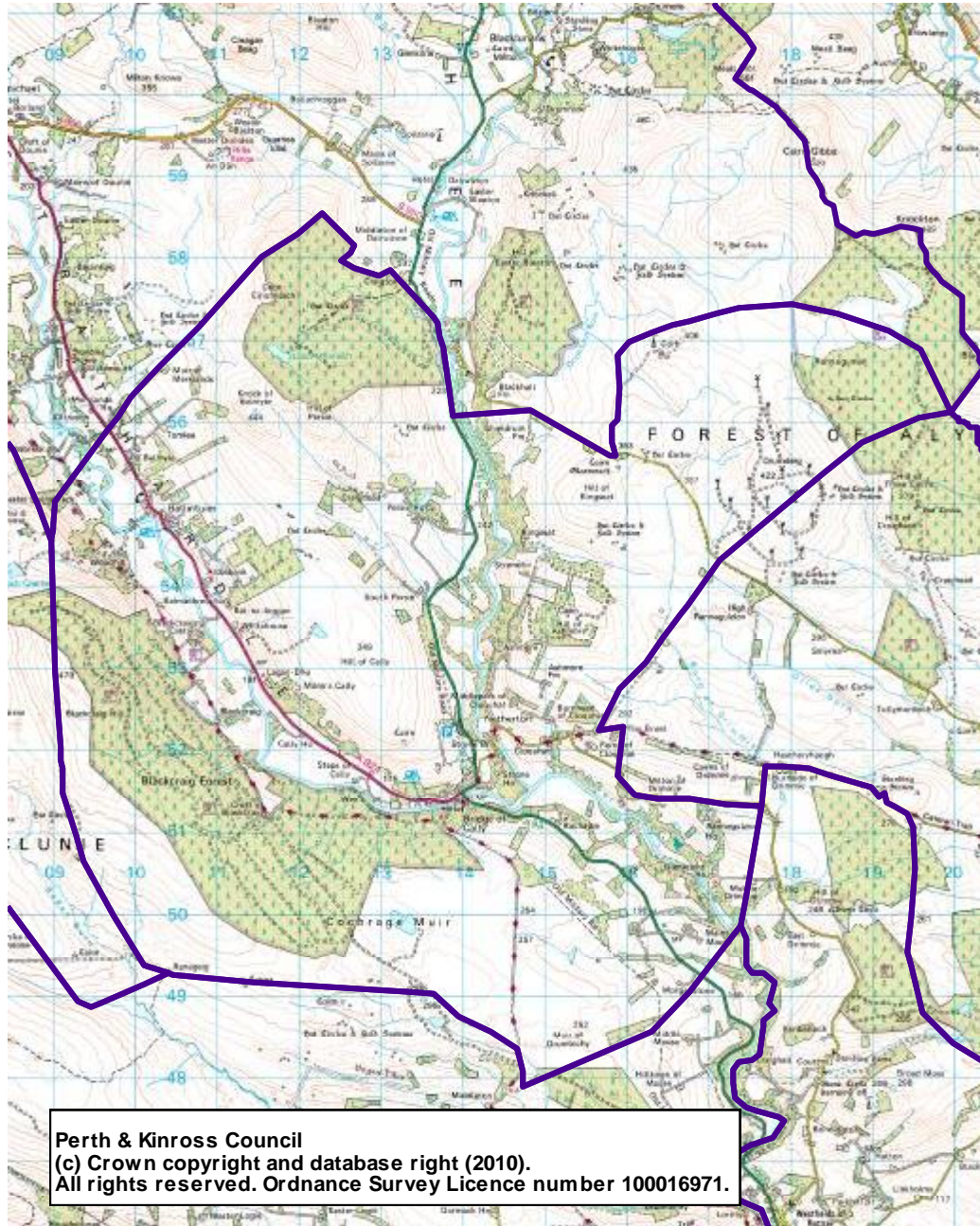
or by e-mail to: [ECStatutoryconsultations@pkc.gov.uk](mailto:ECStatutoryconsultations@pkc.gov.uk)

no later than close of business on 25 March 2011.

- ii) the Executive Director (Education and Children's Services) prepares a report on the results of the proposal process for consideration at a future meeting of the Lifelong Learning Committee.

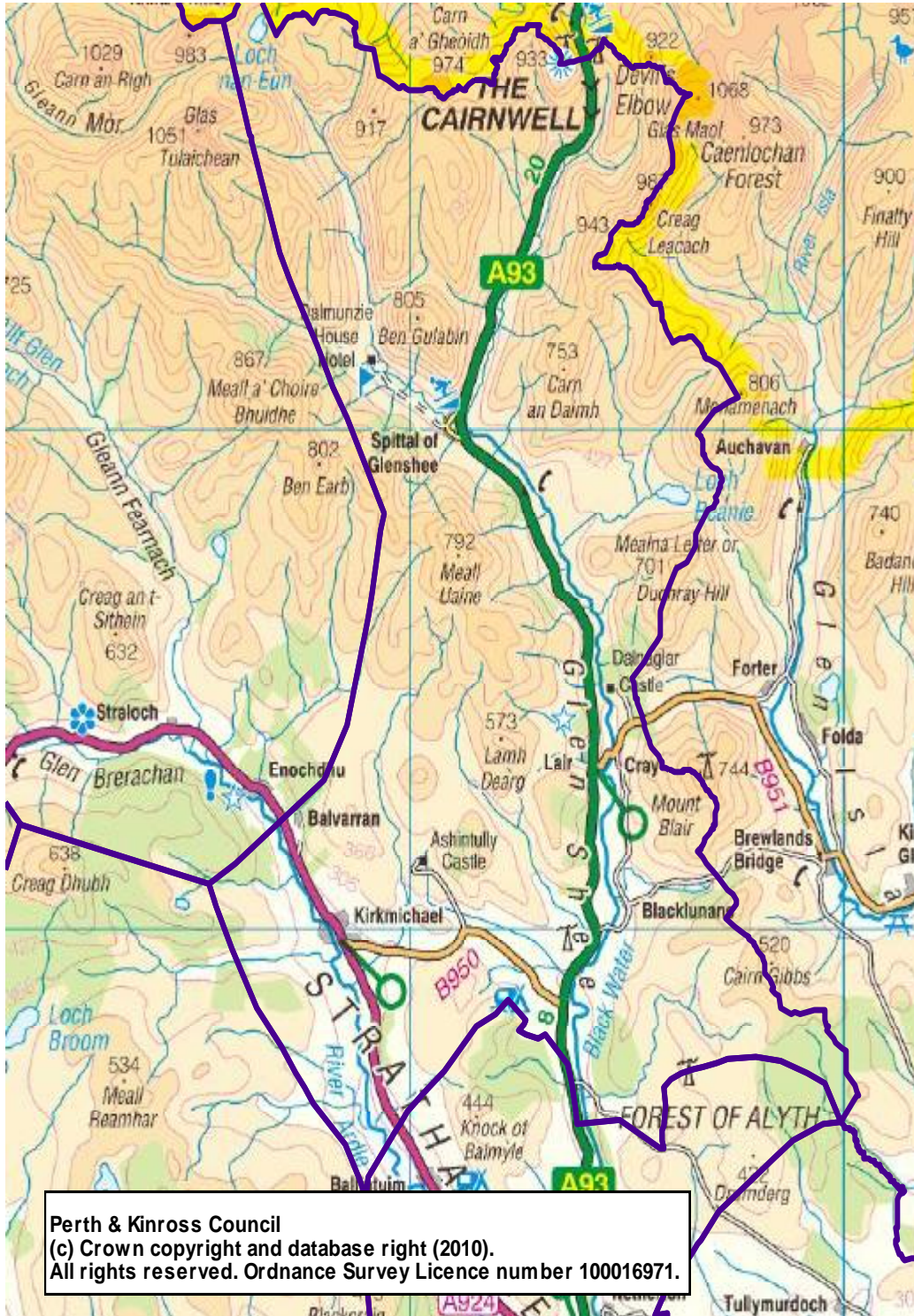
John Fyffe  
Executive Director (Education and Children's Services)

DELINEATED AREA OF STRONE OF CALLY PRIMARY SCHOOL

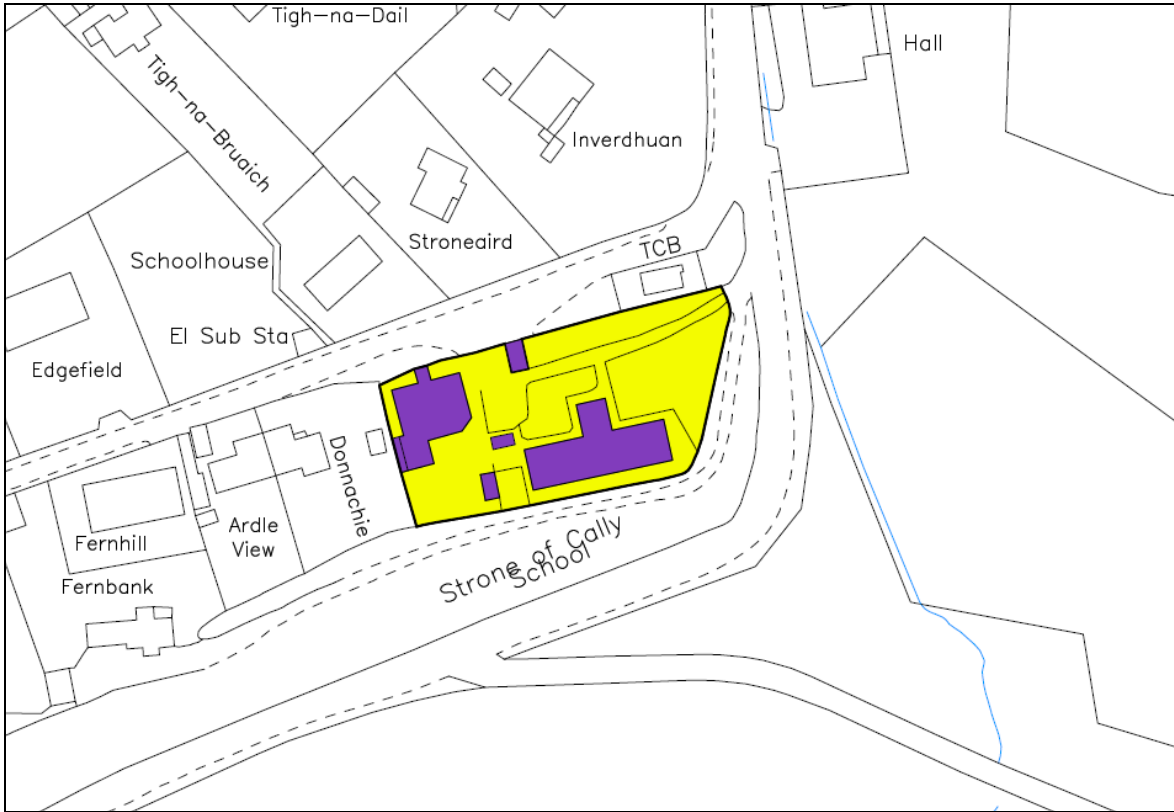




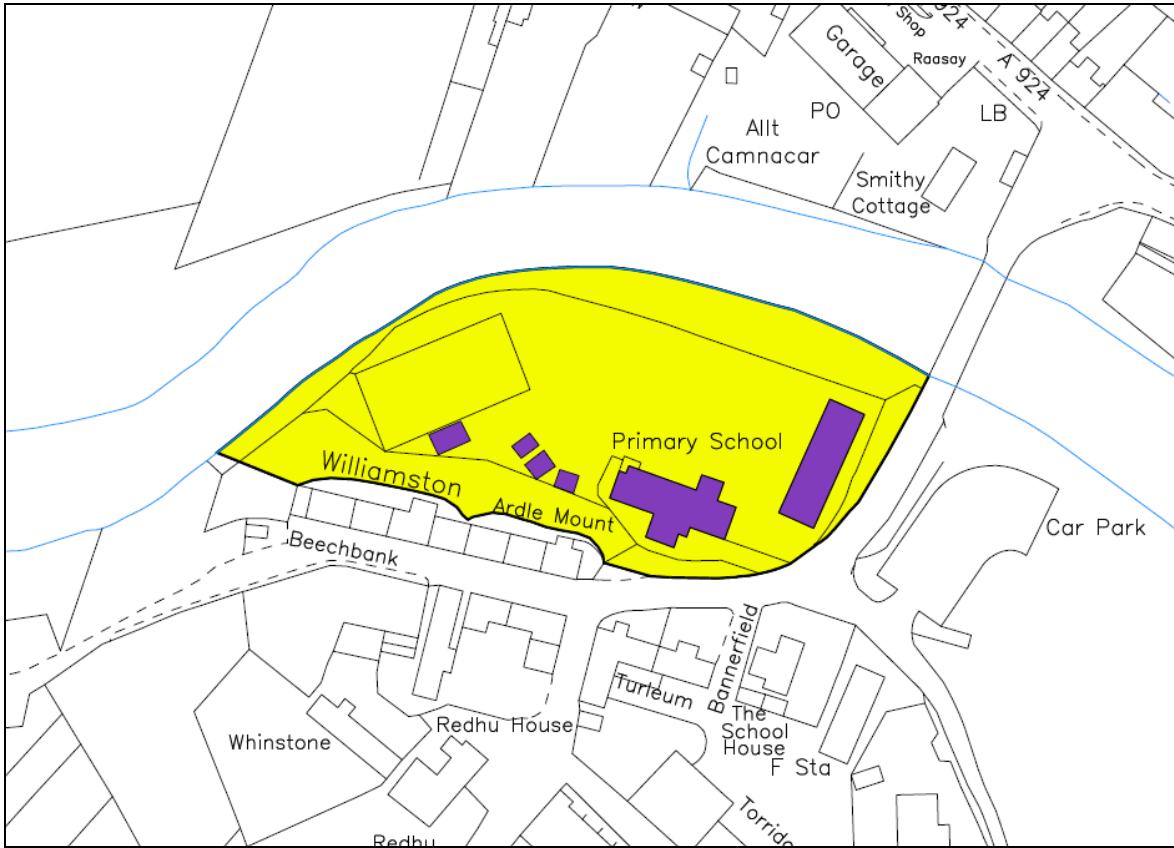
DELINEATED AREA OF KIRKMICHAEL PRIMARY SCHOOL



OUTLINE OF STRONE OF CALLY PRIMARY SCHOOL BUILDING AND THE SCHOOL GROUNDS



OUTLINE OF KIRKMICHAEL PRIMARY SCHOOL BUILDING AND THE SCHOOL GROUNDS





### HISTORICAL AND PROJECTED PUPIL ROLL DATA FOR STRONE OF CALLY PRIMARY SCHOOL

1999	2000	2001	2002	2003	2004	2005	2006	2007	2008	2009
11	9	9	9	9	12	11	11	8	4	2

Source: [Scottish Government – School Education - Datasets](#)

2010	2011	2012	2013	2014	2015	2016	2017	
0	0	0	0	0	0	0	0	(if mothballed)
1	1	1	1	0	0	0	0	(if reopened)

### ANALYSIS OF SCHOOL/PUPIL INFORMATION

School	Capacity	Roll (Census 2009)	Roll (Census 2010)	Highest Projected Roll – 2017/2018	Condition Rating	Suitability Rating
Strone of Cally	50	2	0	1	B	B

APPENDIX 6

HISTORICAL AND PROJECTED PUPIL ROLL DATA FOR KIRKMICHAEL PRIMARY SCHOOL

1999	2000	2001	2002	2003	2004	2005	2006	2007	2008	2009
37	35	42	45	44	44	42	44	46	47	37

Source: [Scottish Government – School Education - Datasets](#)

2010	2011	2012	2013	2014	2015	2016	2017
39	38	37	36	34	37	40	36

ANALYSIS OF SCHOOL/PUPIL INFORMATION

School	Capacity	Roll (Census 2009)	Roll (Census 2010)	Highest Projected Roll – 2016/2017	Condition Rating	Suitability Rating
Kirkmichael	72	37	39	40	B	B

## CONSULTEE RESPONSE FORM



## Education and Children's Services

## Response Form

I wish my response to be considered as confidential with access restricted to Elected members and Council Officers of Perth and Kinross Council

## Proposal:

That subject to the outcome of this Proposal exercise:

- Education provision at Strone of Cally Primary School be discontinued with effect from Wednesday 27 June 2012, or as soon as possible thereafter;
- That pupils from Strone of Cally have their education provided at Kirkmichael Primary School, from Tuesday 14 August 2012 or as soon as possible thereafter; and
- That the delineated area of Kirkmichael Primary School be extended to subsume the whole delineated area of Strone of Cally Primary School from Tuesday 14 August 2012.

**This part of the form must be completed for a valid response:**

Name: \_\_\_\_\_ Address: \_\_\_\_\_

Postcode: \_\_\_\_\_

**Your Interest: (please tick)**

Parent  Child / Young Person  Staff  Other \*

\*Other: (please specify) \_\_\_\_\_

Elected Member / MSP / MP  Member of Community Council

Please state your views on the proposal (continue overleaf if necessary)

Office Use: \_\_\_\_\_