

197 AIRPORT ROAD WEST
BELFAST
BT3 9ED
TEL: 08454 55 55 55*
FAX: 028 9055 5500

24 hour gas escape
number 0800 002 001*

*Calls may be recorded
and monitored



PD/er
9 June 2008

Ms Lucia Wilson
Clerk
Committee for Enterprise, Trade and Investment
Room 424 Parliament Buildings
Stormont
Belfast
BT4 3XX

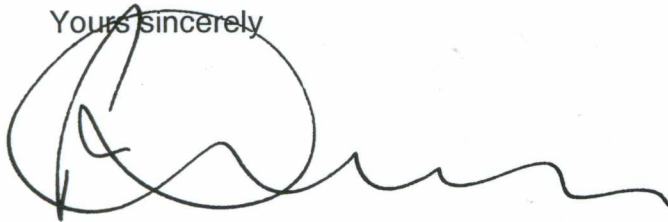
Dear Lucia

Committee Briefing 15 May 2008

Further to your letter of 19 May 2008, please find enclosed the information your Members requested in respect of energy prices.

Please do not hesitate to contact me if you require any further information.

Yours sincerely



Peter Dixon
Group Chief Executive

Enc.



History of change in Phoenix tariffs

GAS

Workings

Payment Method	Average consumption n, Mar 2008	No of customers end Mar 08	Bill - Mar 97	Bill - Oct 00	Bill - Oct 01	Bill - Oct 02	Bill - Oct 03	Bill - Oct 04	Bill - Oct 05	Bill - Jan 06	Bill - Oct 06	Bill - Apr 07	Bill - May 08	Bill increase, 97 to 08
Quarterly Credit	12.173	24,182	£250	£244	£250	£255	£276	£307	£399	£468	£536	£458	£586	134%
Direct Debit	16.444	25,896	£278	£304	£310	£345	£386	£507	£598	£598	£688	£754	£754	171%
PAYG	10.659	56,873	£230	£214	£219	£223	£238	£265	£345	£404	£463	£395	£506	120%
	12,402	106,951												137%

£000s

Revenue - Mar 97	Revenue - Oct 00	Revenue - Oct 01	Revenue - Oct 02	Revenue - Oct 03	Revenue - Oct 04	Revenue - Oct 05	Revenue - Jan 06	Revenue - Oct 06	Revenue - Apr 07	Revenue - May 08
£6,057	£5,904	£6,043	£6,170	£6,679	£7,434	£9,658	£11,326	£12,970	£11,077	£14,178
£7,202	£7,691	£7,874	£8,040	£8,927	£9,997	£13,124	£15,489	£17,820	£15,136	£19,532
£13,070	£12,158	£12,444	£12,706	£13,558	£15,090	£19,604	£23,000	£26,334	£22,490	£28,783
£26,330	£25,752	£26,360	£26,916	£29,164	£32,521	£42,386	£49,814	£57,123	£48,703	£62,493

For comparability, revenue figures have been worked out using March 08 customer numbers. These revenue figures are only used to estimate the effective charge per kWh based on a consistent customer base.

Summary - Nominal

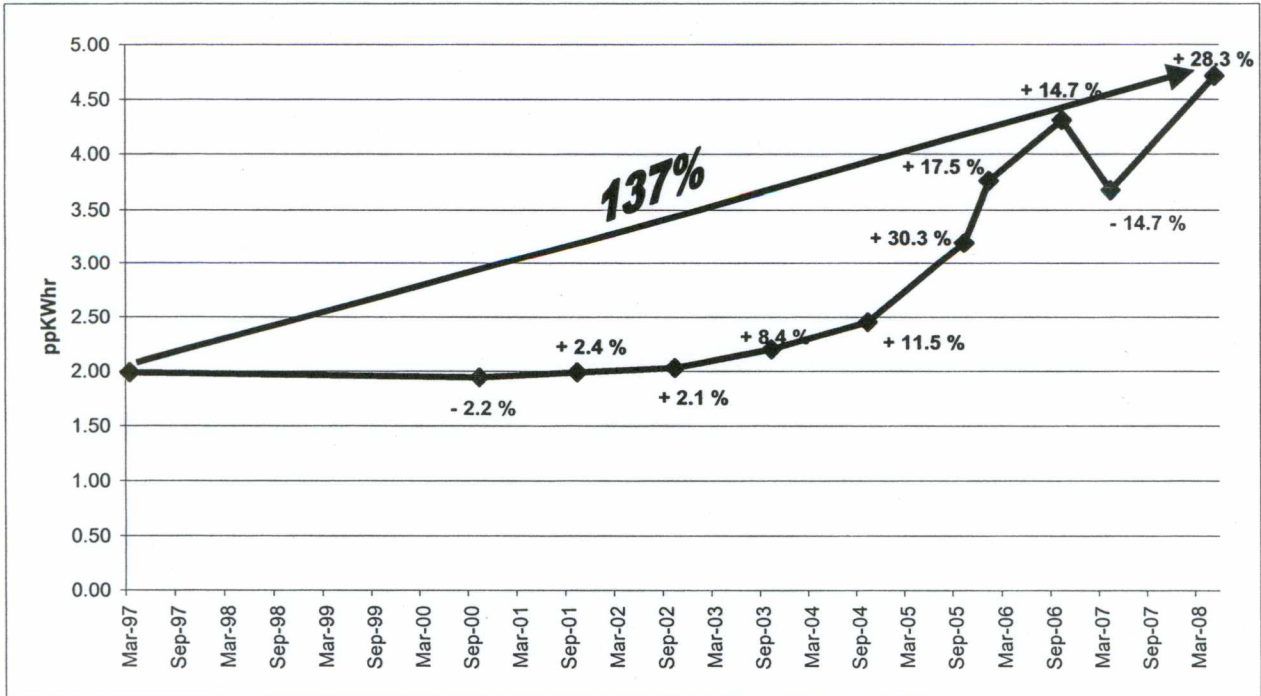
	March 1997	October 2000	October 2001	October 2002	October 2003	October 2004	October 2005	January 2006	October 2006	April 2007	May 2008
'Pence per' History	1.99	1.94	1.99	2.03	2.20	2.45	3.20	3.76	4.31	3.67	4.71
	58.18	56.90	58.24	59.47	64.44	71.85	93.65	110.06	126.21	107.61	138.08
ppkWh											
ppt											
tariff increase		-2.2%	2.4%	2.1%	8.4%	11.5%	30.3%	17.5%	14.7%	-14.7%	28.3%
increase to base		-2.2%	0.1%	2.2%	10.8%	23.5%	61.0%	89.2%	117.0%	85.0%	137.3%
published percentage increase at time		3.0%	2.4%	2.1%	10.8%	11.3%	29.9%	17.3%	14.5%	-14.6%	28.3%
based on ave consumptions at that time											

Summary - Real

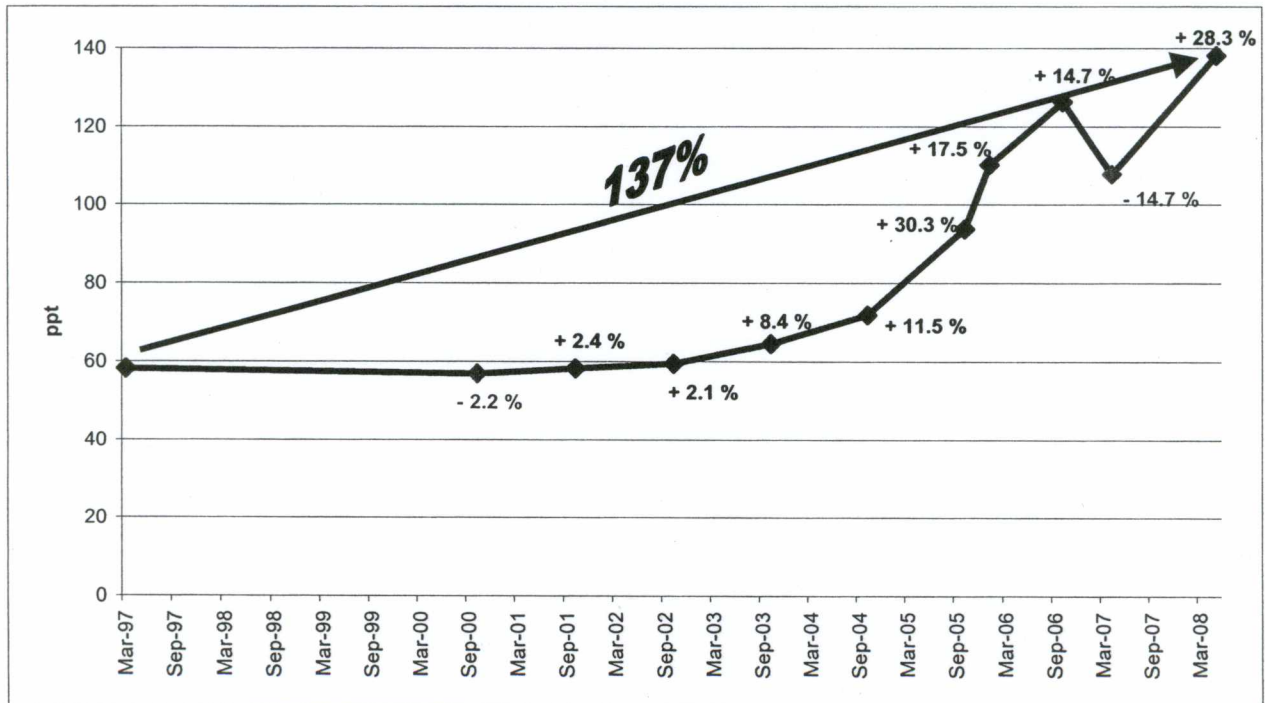
	March 1997	October 2000	October 2001	October 2002	October 2003	October 2004	October 2005	January 2006	October 2006	April 2007	May 2008
RPI (CHAW)	155.4	171.6	174.3	177.9	182.6	188.6	193.3	193.4	200.4	205.4	214
Nominal ppkWh	1.98	1.94	1.99	2.03	2.20	2.45	3.20	3.76	4.31	3.67	4.71
Real ppkWh	1.98	1.76	1.77	1.77	1.87	2.02	2.57	3.02	3.34	2.78	3.42
ppkWh	1.98	1.76	1.77	1.77	1.87	2.02	2.57	3.02	3.34	2.78	3.42
ppt	58.17	51.53	51.93	51.95	54.84	59.21	75.29	88.44	97.87	81.41	100.27
tariff on tariff increase		-11.4%	0.8%	0.0%	5.6%	8.0%	27.2%	17.5%	10.7%	-16.8%	23.2%
increase to base		-11.4%	-10.7%	-10.7%	-5.7%	1.8%	29.4%	52.0%	68.2%	39.9%	72.4%

History of change in Phoenix tariffs over time - Graphically NOMINAL

Nominal Pence per KWhr: March 1997 - May 2008

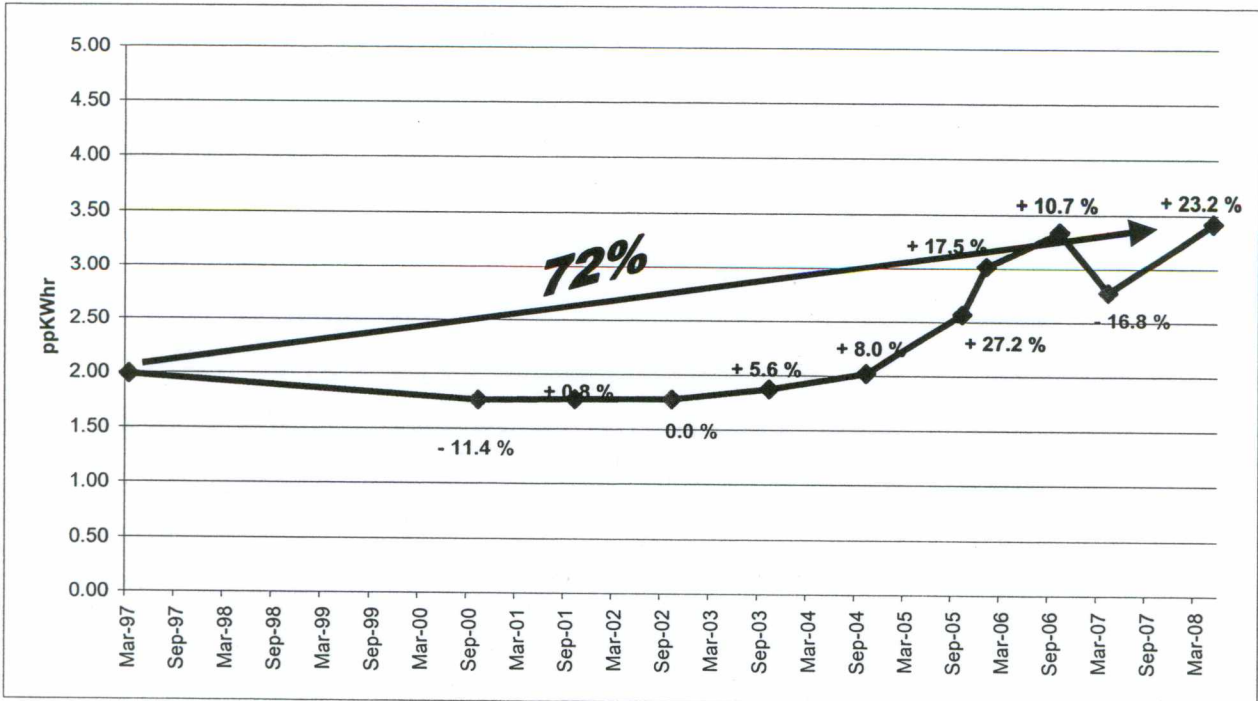


Nominal Pence per therm: March 1997 - May 2008

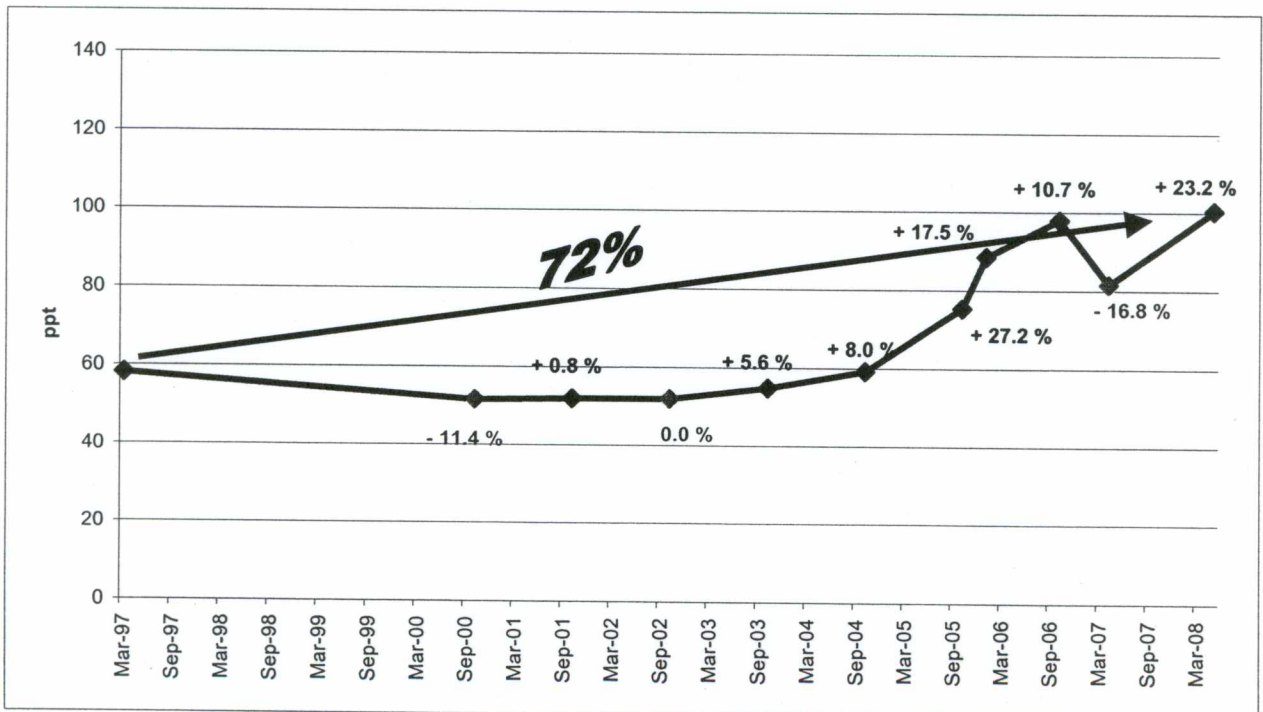


History of change in Phoenix tariffs over time - Graphically REAL

Real Pence per KWhr: March 1997 - May 2008



Real Pence per therm: March 1997 - May 2008



History of change in Oil tariffs

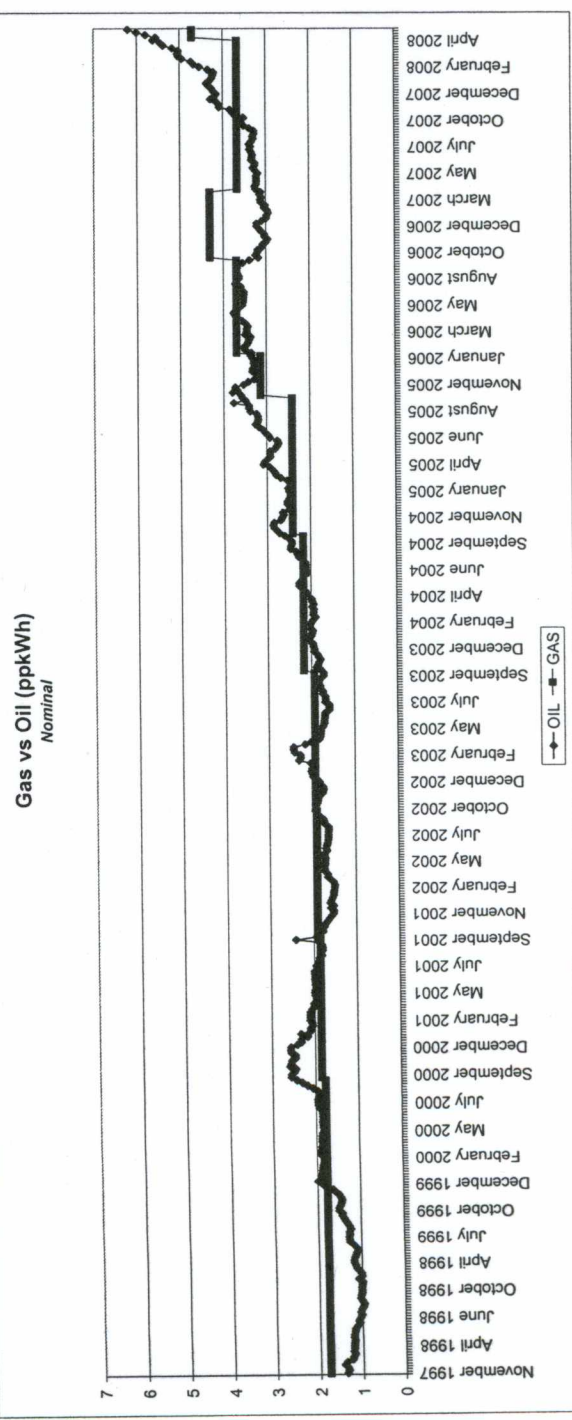
OIL

	November 1997	October 2000	October 2001	October 2002	October 2003	October 2004	October 2005	January 2006	October 2006	April 2007	May 2008
NOMINAL											
* Pence per History *	1.38	2.50	1.88	1.87	1.80	2.05	3.03	3.34	3.35	3.18	5.57
	40.44	73.27	55.10	54.80	52.75	77.66	106.38	97.89	98.18	63.20	163.24
Percentage Increase											
tariff increase	81.2%	-24.8%	-0.5%	-3.7%	47.2%	37.0%	-8.0%	0.3%	-5.1%	75.2%	
increase to base	81.2%	39.2%	30.4%	32.0%	153.0%	142.0%	142.8%	142.8%	142.8%	303.0%	

* Based upon 2 month average (1 month pre, 1 month post gas tariff review date), except Nov 1997, when average taken for November and December 1997
 Note: November 1997 earliest date of records available, hence it's use as data base

	November 1997	October 2000	October 2001	October 2002	October 2003	October 2004	October 2005	January 2006	October 2006	April 2007	May 2008
REAL (Nov 1997)											
RPI (CHAW)	159.6	171.6	174.3	177.9	182.6	188.6	193.3	193.4	200.4	205.4	214
Nominal ppkWh	1.38	2.50	1.88	1.87	1.80	2.05	3.03	3.34	3.35	3.18	5.57
Real ppkWh	1.38	2.33	1.72	1.68	1.57	2.24	3.00	2.76	2.67	2.47	4.15
* Pence per History	1.38	2.33	1.72	1.68	1.57	2.24	3.00	2.76	2.67	2.47	4.15
Corrected for Inflation	40.44	68.14	50.45	49.17	46.11	65.72	87.84	80.78	78.19	72.42	121.74
Percentage Increase											
tariff on tariff increase	68.5%	-26.0%	-2.5%	-8.2%	42.5%	33.7%	-8.0%	-3.2%	-7.4%	66.1%	
increase to base	68.5%	28.7%	21.6%	14.0%	62.5%	117.2%	95.7%	93.3%	93.3%	192.4%	

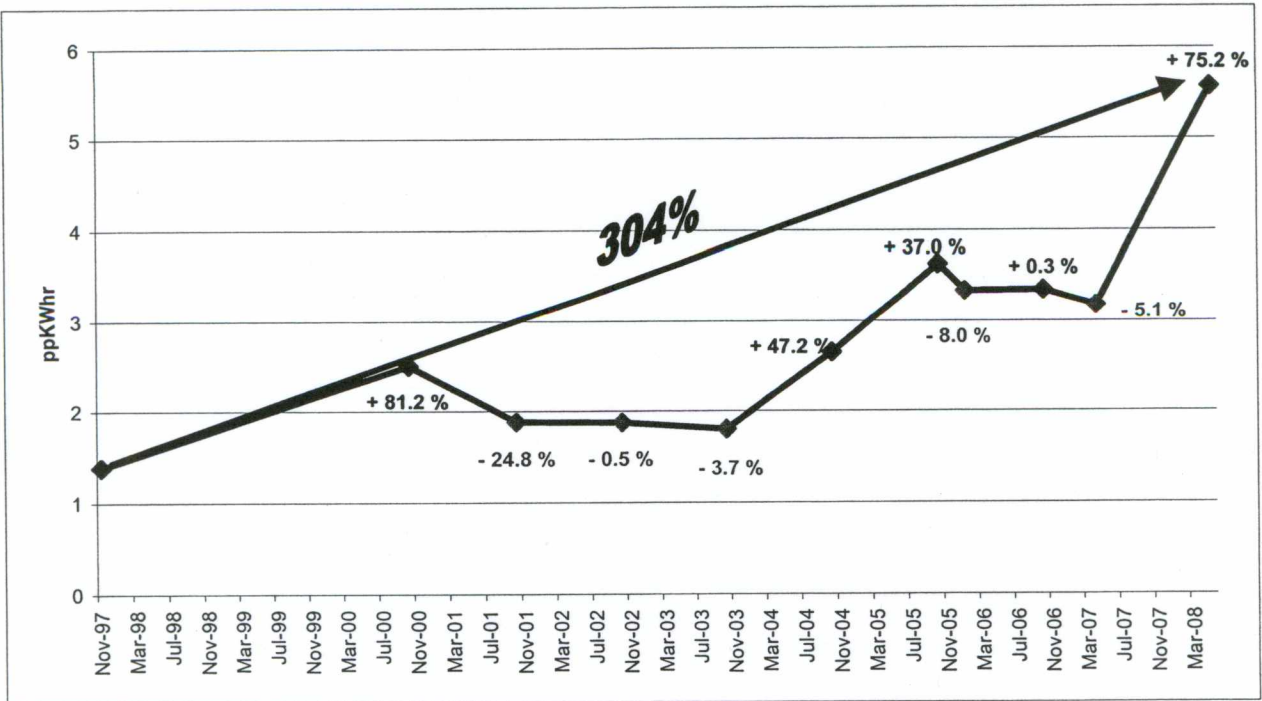
	March 1997	October 2000	October 2001	October 2002	October 2003	October 2004	October 2005	January 2006	October 2006	April 2007	May 2008
GAS (REAL March 1997)											
ppkWh	1.98	1.78	1.77	1.87	2.02	2.67	3.02	3.34	3.34	2.78	3.42
pppt	58.17	51.63	51.03	54.84	59.21	75.29	88.44	87.87	81.41	100.27	
Percentage Increase											
tariff increase	-11.4%	0.8%	0.0%	5.6%	9.0%	27.2%	17.5%	10.7%	-16.8%	23.2%	
increase to base	-11.4%	-10.7%	-10.7%	-5.7%	1.9%	28.4%	52.0%	68.2%	39.9%	72.4%	



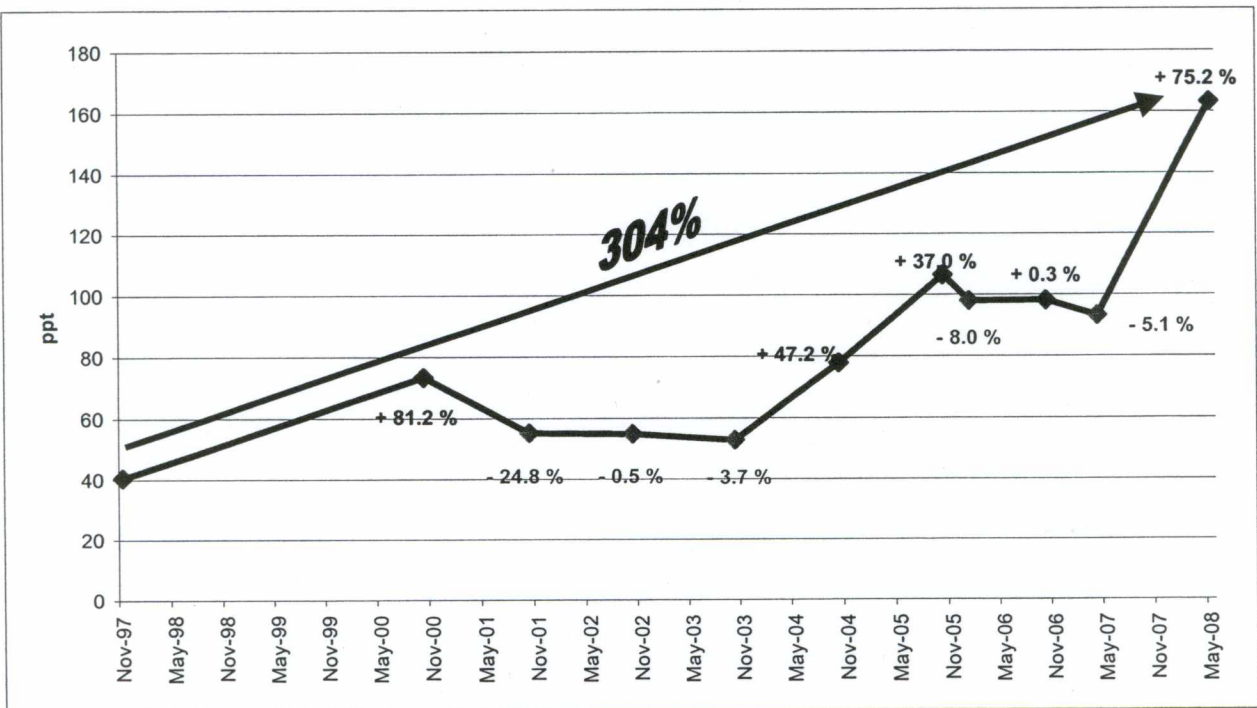
History of change in OIL tariffs over time - Graphically

NOMINAL

Nominal Pence per KWhr: November 1997 - May 2008



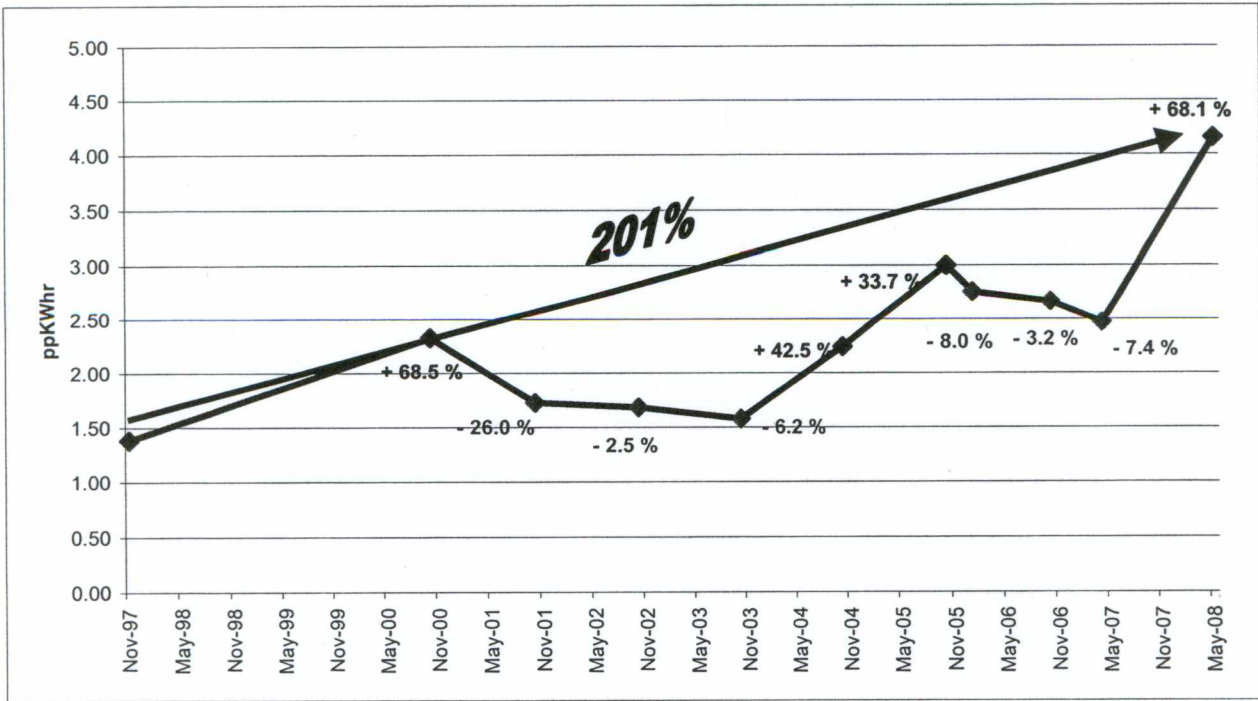
Nominal Pence per therm: November 1997 - May 2008



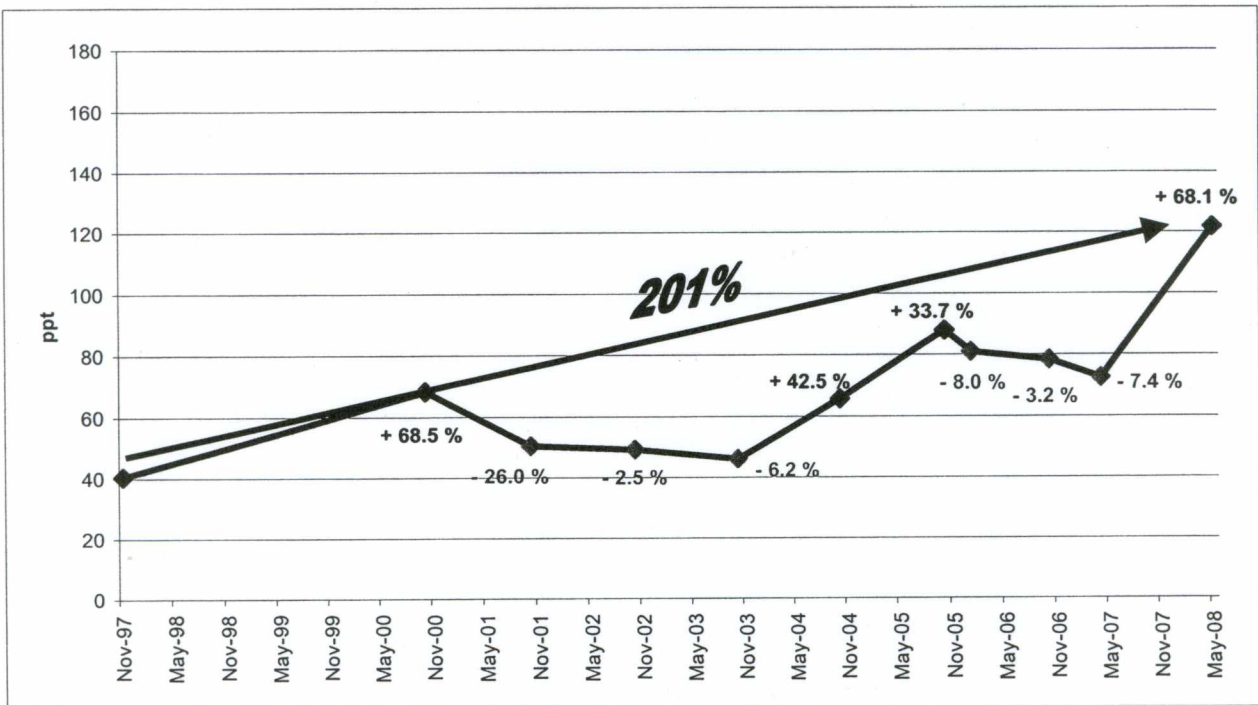
History of change in OIL tariffs over time - Graphically

REAL

Real Pence per KWhr: November 1997 - May 2008



Real Pence per therm: November 1997 - May 2008



Tariff Detail

March 1997 tariff	Ex VAT	inc VAT
Tariff, ppkWh	1.3	1.365
Standing charge - DD	51.10	53.66
Standing charge - credit	80.30	84.32

Oct 00 tariff	inc VAT	Low User		Home Energy	
		std credit	DD	std credit	DD
		£	£	ppkWh	ppkWh
Flat annual fee, up to 5,000 kWh, £		106.97	94.37		
Up to 17,500 kWh				2.01	1.81
Over 17,500 kWh				1.47	1.47

Oct 01 tariff	inc VAT	Low User		Home Energy	
		std credit	DD	std credit	DD
		£	£	ppkWh	ppkWh
Flat annual fee, up to 5,000 kWh, £		109.49	96.64		
Up to 17,500 kWh				2.053	1.849
Over 17,500 kWh				1.505	1.505

Oct 02 tariff	inc VAT	Low User		Home Energy	
		std credit	DD	std credit	DD
		£	£	ppkWh	ppkWh
Flat annual fee, up to 5,000 kWh, £		111.72	98.64		
Up to 17,500 kWh				2.096	1.888
Over 17,500 kWh				1.537	1.537

Oct 03 tariff		Low User		Home Energy		Prepayment	
		£	ex VAT	ppkWh	ex VAT	ppkWh	ex VAT
Flat annual fee, up to 2,000 kWh, £		£63.00	£60.00	-	-	-	-
Up to 2,000 kWh				3.15	3	2.24	2.13
Over 2000 kWh				2.096	1.996	2.24	2.13
Direct Debit discount		£5.25	£5.00	£21.00	£20.00		

Oct 04 tariff		Low User		Home Energy		Prepayment	
		£	ex VAT	ppkWh	ex VAT	ppkWh	ex VAT
Flat annual fee, up to 2,000 kWh, £		£70.12	£66.78	-	-	-	-
Up to 2,000 kWh				3.50595	3.339	2.49	2.37069
Over 2000 kWh				2.333	2.221548	2.49	2.37069
Direct Debit discount	unchanged	£5.25	£5.00	£21.00	£20.00		

Oct 05 tariff		<2,000kWh pa		Home Energy		Prepayment	
		£	ex VAT	ppkWh	ex VAT	ppkWh	ex VAT
Flat annual fee, up to 2,000 kWh, £		£91.08	£86.75	-	-	-	-
Up to 2,000 kWh				4.554	4.337	3.234	3.080
Over 2000 kWh				3.031	2.886	3.234	3.080
Direct Debit discount		£5.51	£5.25	£22.05	£21.00		

Jan 06 tariff		<2,000kWh pa		Home Energy		Prepayment	
		£	ex VAT	ppkWh	ex VAT	ppkWh	ex VAT
Flat annual fee, up to 2,000 kWh, £		£106.85	£101.76	-	-	-	-
Up to 2,000 kWh				5.341	5.087	3.794	3.613
Over 2000 kWh				3.554	3.385	3.794	3.613
Direct Debit discount		£5.51	£5.25	£22.05	£21.00		

Oct 06 tariff		<2,000kWh pa		Home Energy		Prepayment	
		£, inc VAT	£, ex VAT	ppkWh, inc VAT	ppkWh, ex VAT	ppkWh, inc VAT	ppkWh, ex VAT
Flat annual fee, up to 2,000 kWh, £		£122.30	£116.48	-	-	-	-
Up to 2,000 kWh				6.115	5.824	4.344	4.137
Over 2000 kWh				4.070	3.876	4.344	4.137
Direct Debit discount		£5.51	£5.25	£22.05	£21.00		

Apr 07 tariff		<2,000kWh pa		Home Energy		Prepayment	
		£	ex VAT	ppkWh	ex VAT	ppkWh	ex VAT
Flat annual fee, up to 2,000 kWh, £		£104.45	£99.48	-	-	-	-
Up to 2,000 kWh				5.223	4.974	3.710	3.533
Over 2000 kWh				3.476	3.310	3.710	3.533
Direct Debit discount		£5.51	£5.25	£22.05	£21.00		

May 08 tariff		<2,000kWh pa		Home Energy		Prepayment	
		£	ex VAT	ppkWh	ex VAT	ppkWh	ex VAT
Flat annual fee, up to 2,000 kWh, £		£133.71	£127.34	-	-	-	-
Up to 2,000 kWh				6.685	6.367	4.748	4.522
Over 2,000 kWh				4.449	4.237	4.748	4.522
Direct Debit discount		£5.51	£5.25	£22.05	£21.00		